

PAC-V Series Packaged Air Conditioners

Range 8 TR to 140 TR
(28 kW to 491 kW)



Bulletin # 088/2011

Supersedes Bulletin # 060/2009 (Part-2)



R-134a



ISO 9001
BUREAU VERITAS
Certification



SKM Packaged Air Conditioning Units PAC-V Series - R134a



Contents

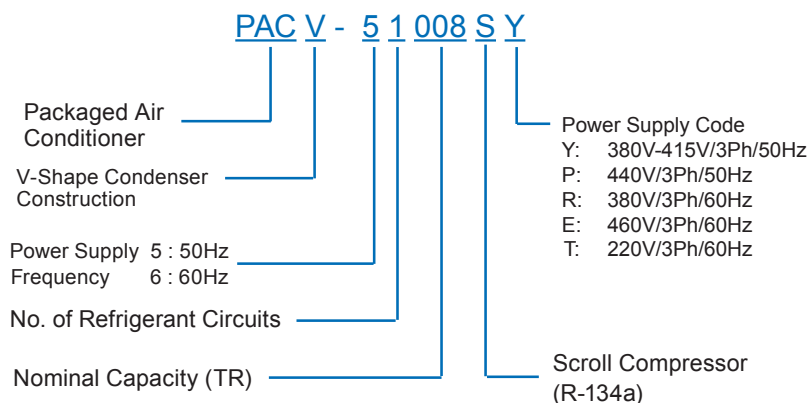
Introduction	2	Selection Procedure	22
Legend	2	Capacity Control Steps	23
Nomenclature	2	Typical Wiring Diagram	24
General Features	3	Electrical Data	25
Component Features	3	Component Air Pressure Drop	27
Control Panel	5	Filter Dimensions & Sizes	28
MicroAutomation/Micro PLC	6	Dimensional Data	29
Optional Features	8	Loading Points	32
Engineering Specification.....	10	Location and Space Requirements ...	38
Capacity Ratings	14	Guide Specifications	40
Fan Performance	20		

Legend

The following abbreviations are used throughout this manual:

BPF..... By-pass Factor	MBh.... BTUH x 1000
cfm Cubic feet per minute	Ph Phase
EER Energy Efficiency Ratio	Pa Pascals
Hz Hertz	PD Pressure Drop
in.wg Inches of water gauge	PI Power Input
kW Kilowatts	RPM Revolutions per Minute
kg kilogram	TR Tons of Refrigeration = 3.517kW
lbs Pounds weight (British units)	V Volts
L/S Liters per second	FPI Fins per Inch

Nomenclature



Introduction

SKM **PACV** series Packaged Air Conditioners are designed and manufactured to meet the requirements of the Gulf's severe climatic conditions and are built specifically for outdoor installations, either on ground or roof level.

SKM **PACV** Packaged Air Conditioners are ideal for warehouses, large halls, schools, mosques, or wherever the requirement is for a heavy duty unit with a hermetic scroll compressor.

The SKM **PACV** series Packaged Air Conditioners are available in 26 different models from 8 to 121 TR (27 to 423 kW) in 50 Hz and 9 to 140 TR (32 to 491 kW) in 60Hz at nominal conditions in one, two, three and four refrigeration circuits.

SKM **PACV** series Packaged Air Conditioners are self contained units consisting of individual or tandem hermetic compressor(s), condenser coil(s), evaporator coil, expansion valve(s), connecting piping and all necessary liquid line accessories & safety controls.

SKM **PACV** series Packaged Air Conditioners are factory assembled, leak tested, evacuated, internally wired, fully charged with refrigerant. Each unit is fully factory tested before dispatch and is ready for installation. All that is required on site is to connect ducts, drain lines, main power supply and field wiring to the room temperature sensor.

SKM **PACV** series Packaged Air Conditioners are rated in accordance with AHRI-340/360.

SKM provides qualified service and stocks of replacement parts in all major cities of the G.C.C. countries, Egypt, Jordan, and Pakistan. See back cover for details or call SKM.

SKM Air Conditioning Equipment,



You name it....We cool it

SKM Packaged Air Conditioning Units PAC-V Series - R134a

General Features

The **PACV** series is a modern, diversified and environment friendly series of packaged air conditioners which use R - 134a as the refrigerant.

The complete **PACV** package provides an extremely rugged, heavy duty, long-life, energy efficient and self-contained package air conditioner that will provide cooling at higher efficiency over a long and extended life. What makes **PACV** series the pride of SKM products is the use of :

- High efficiency totally sealed hermetic scroll compressor.
- Totally enclosed, Class F insulated, IP55 protected condenser and evaporator fan motors.
- Heavy duty condenser and evaporator coils optimised in design for long-life maintenance free operation.
- Cabinet construction specifically designed for Gulf climates.
- IP 54 Electrical panel.

The SKM **PACV** series packaged air conditioning units are durable, dependable, strong, reliable, versatile, quiet and energy efficient. Wherever a heavy duty packaged air-conditioner is required, the **PACV** series should be an automatic choice.

Component Features

Compressor

Compressors used in **PACV-S** series are hermetically sealed Scroll type.

Compressors conform to internationally recognized standards like CE & UL.

For models **PACV-51008S/61009S, 52015S/62018S** and one compressor from different compressors combination model **PACV-52017S/62020S**: Compressors have been provided with an internal overload motor protection to prevent against excessive current and temperature.

For all other models and one compressor from different compressors combination model **PACV-52017S/62020S**: Compressors have been provided with a preinstalled motor protection module inside the terminal box. This device provides for efficient and reliable protection against overheating and overloading as well as phase loss/reversal.

The Compressors are selected for their extremely high energy efficiency and heavy duty industrial/commercial usage with economy of operation in addition to high technology & low noise.

Parallel Operation

A parallel compressors installation, with common suction line and common discharge line, gives a reduced operating cost through greater control of capacity and power consumption. This is achieved by staggering compressor switch-on sequences that allow the parallel system to match its power with the capacity needed. By switching-off individual compressor from parallel installation, while other compressor is operating 100%, the improved part load efficiency can be achieved. The specially developed and adopted oil equalization system ensures correct compressors operation, oil balancing between compressors and reliability.

Condensers

Condenser coils are manufactured of seamless copper tubes mechanically bonded to aluminum fins to ensure optimum heat transfer.

Condenser Coil



All coils are tested against leakage by air pressure of 450 psig (3100 kPa) under water. All standard coils are 2,3 or 4 rows/14 FPI, 3/8" (9.5 mm) O.D. tubes. An integral subcooling circuit is provided to increase the cooling capacity, without additional operating cost.

For different application requirements, other optional condenser fin materials are available:

- Copper fins.
- Electroplated Copper Fins.
- Copper finned coils with electro-tinned after manufacturing.
- Precoated Aluminum fins
The pre-coated is hydrophobic polyurethane resin. This option provides substantial corrosion protection beyond standard coil construction.
- Aeris Guard Coil Coating
The Aeris Guard Coil is a self etching high performance modified epoxy finish that is specifically designed to coat and protect Aluminum and Copper surfaces. In addition, the coating is ideal for the protection of ferrous and non ferrous materials.

SKM **PACV** series, all models, are restricted to a 14FPI (1.8 mm) fin spacing condenser coil. Gulf dust storms and the general level of available maintenance in Gulf countries ensures this condenser coil design shall provide long life and maintenance-free operation with the least possibility operational blockage on the condenser. Ample condenser surface and sensible air flow across the condenser ensures a low temperature differential between condensing temperature and the high Gulf ambients making the **PACV** packaged unit perform efficiently and durably.

SKM Packaged Air Conditioning Units PAC-V Series - R134a

Condenser Fans

Condenser fans are propeller type, aluminium alloy blades, directly driven by electric motors. Motors are Totally Enclosed Air Over (TEAO) six pole with class 'F' insulation and minimum IP55 protection. The TEAO and class 'F' insulation features ensure long life and are unique for SKM.

The motors are factory wired, using wires specially selected for high ambient operation, to unit control panel where the motor contactors are located to control the operation of these motors.



Condenser Fan

The condenser fans are individually statically and dynamically balanced at the factory.

Complete fan assembly is provided with suitable acrylic coated fan guard.

Evaporator

Evaporator coils are manufactured of seamless copper tubes mechanically bonded to aluminium fins to ensure optimum heat transfer. All evaporator coils are tested against leakage by air pressure of 300 psig (2068 kPa) under water. The DX evaporator coils are complete with headers of seamless copper tubing. Supply headers incorporate a correctly sized distributor. For different application requirements, other evaporator coil material and/or treatment are available on request.

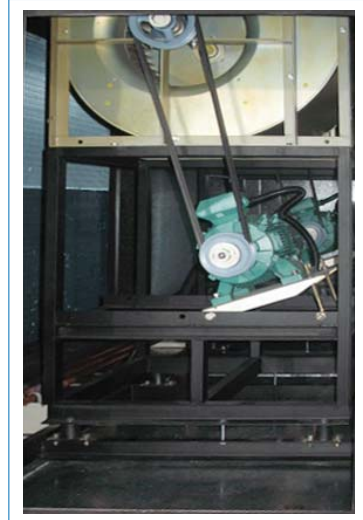
- Copper fins.
- Electroplated Copper fins.
- Copper finned coils with electro-tinned after manufacturing.
- Precoated Aluminum fins.
The pre-coated is hydrophobic polyurethane resin. This option provides substantial corrosion protection beyond standard coil construction.
- Aeris Guard Coil Coating.
The Aeris Guard Coil is a self etching high performance modified epoxy finish that is specifically designed to coat and protect Aluminum and Copper surfaces. In addition, the coating is ideal for the protection of ferrous and non ferrous materials.

Evaporator coils are rated in accordance with AHRI-410. Evaporator coil supplied with suitable size thermostatic expansion valve(s) and multi-circuited distributors providing capacity modulation to match the compressors. The cross wave fins and staggered tubes design uses the evaporator surface effectively by creating uniform air turbulence and optimum heat transfer over the entire finned surface. Requirements for higher face velocities can be handled by use of moisture eliminators to avoid carryover.

Fan Section

Fans in the **PACV** units are selected for the best sound characteristics based on maximum fan efficiency. More than one arrangement of evaporator fans are used in the **PACV** series packaged units due to the wide range of air flow rates.

Commonly, all fans are double inlet, double width, centrifugal type with forward curved impellers provide the combination of efficiency and quietness of operation. All fans are statically and dynamically balanced, belt driven by motor sizes up to 15 kW are provided with adjustable pitch pulleys as standard. Above 15 kW motor sizes are equipped with fixed pitch pulleys as standard and adjustable pitch pulleys are option. Specify VPP.



Single fan is used for **PACV-51008S**, **PACV-51010S**, **PACV-61009S** & **PACV-61012S** models. Models **PACV-51014S~PACV-52055S** & **PACV-61018S~PACV-62066S** are equipped with two fans. These fans are mounted on a single heavy duty shaft driven by a single electric motor. Shaft end insert into oversized, tapered lock self aligning long life bearings. The motor is mounted on an adjustable base, so that belt tension can be easily adjusted.

Models **PACV-52065S** and **PACV-62076S** onwards, use single fan assembly, which has maximum strength, high performance, quietness and reliability. These fans use self aligned ball or pillow block bearings that are greased for life. Pillow block bearings are provided with re-greasing fittings. The motor is mounted on an adjustable base, so that belt tension can be easily adjusted. The complete fan-motor drive assembly is mounted on a floating sub-base. In order to limit transmission of noise and vibration, the complete fan motor sub-base assembly is mounted on anti-vibration mounts. Flexible connection is provided between fan discharge and casing panel to avoid transmission of vibration to the connecting duct.

The **optional** modular construction units for models **PACV-51008S~PACV-52055S** & **PACV-61009S~62066S** are also using the same fan specifications as mentioned above.

The electric motors are foot mounted, 4 pole, totally enclosed fan cooled (TEFC), IP-55 protected, Class F insulation with Class B temperature rise.

Drive package is factory selected for the medium air flow rate as shown in the capacity ratings. Alternative drive packages to meet specific job or client requirements can be provided.

SKM Packaged Air Conditioning Units PAC-V Series - R134a

Refrigerant Circuit

PACV series comes complete, as standard, with correctly sized and piped refrigerant lines including sight glass, filter drier, thermostatic expansion valve, solenoid valve, shut-off valve, and a full operating charge of R-134a in each circuit.

Piping is fabricated from ACR grade copper piping. Suction line is insulated with 1/2" (12mm) wall thickness closed cell pipe insulation.

Filter Section

PACV series can be with a range of filter sections and filters to meet requirements for the most demanding applications.

- Flat or vee filter sections to accommodate 1" or 2" cleanable aluminium media filters can be provided.
- A bag filter section to house 22", 30" or 36" deep bag filters having efficiencies as desired can also be provided, as required. Filter sections come with latches to provide easy access for removal and for maintenance.
- On 100% fresh air applications an initial sand trap louvre can effectively minimize entrance of sand into the air stream.
- High efficiency mini pleat panel filters are available as an alternative for bag filter where space is limited. Filter sections come with latches to provide easy access for removal and for maintenance.

To order a sand trap louvre from SKM specify fresh air opening size with option ASL.

Casing/Structure

Designed for ease of handling and low cost to install. The **PACV** Air Cooled Packaged Units are factory assembled and mounted on a rigid base. The unit casing used in **PACV** Packaged units is made of zinc coated galvanized steel sheets conforming to JIS-G 3302 and ASTM A653 which is phosphatized then baked after an electrostatic powder coat of approximately 60 microns.

This finish and coating pass a 1000 hours in 5% salt spray testing at 95°F (35°C) and 95% relative humidity as per ASTM B117. The entire casing panels are designed to be leak proof against rain and ensure rain cannot enter the **PACV** series packaged air conditioner interior. Evaporator section sealed by the use of vinyl gasketing material.

The evaporator section is insulated from all sides with black-neoprene faced heavy density 1" thick fiber glass insulation for models up to **PACV-52055S** & **62066S** and 2" thick fiber glass insulation for models **PACV-52065S** & **62076S** onwards. The insulation cum sound liner meets the fire requirements of NFPA90A and is secured with mechanical fasteners in addition to water resistant adhesive.

For applications requiring an inner skin in the evaporator section, option DSE provides 0.7 mm galvanized inner skin. Suitable isolation to ensure no cold-bridges and no condensation on the exterior of the units is provided. The condensate drain pan is heavily insulated to ensure that condensation may not occur. Stainless steel condensate drain pans are available on request.

Electrical Control Panel

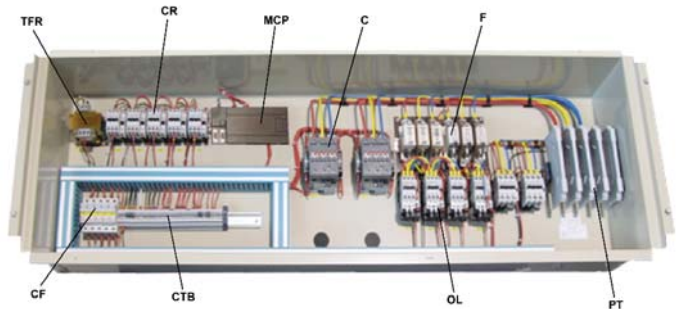
The unit mounted IP-54 control panel enclosure contains all starting, operating, and safety controls. For models up to **PACV-52055S** & **62066S** control panels are with dead front panel cover screwed onto the enclosure. All other models are with external panels having hinged door and key fastener provided for access and security.

All wirings are sized as per NEC regulations. Wiring is fully ferruled enabling ease of proper identification. The control panel is factory wired for 220-240V/1 PH/ 50 & 60Hz control power supply. A Micro Automation logic controller is built-in to control the unit.

The following **standard** components are used in all **PACV** Packaged Air Conditioners:

- Individual contactors for compressor, condenser fan motors and evaporator fan motor.
- Individual over-current protection for condenser/evaporator fan motors.
- Fuses for condenser/evaporator fan motors as per NEC.
- Micro Automation Controller/Micro PLC.
- Anti-recycle timer to prevent rapid cycling and short cycling of compressors thru the Micro Controller.
- Low pressure safety switch, one per refrigerant circuit.
- High pressure safety switch, one per compressor.
- Head pressure control by fan cycling for low ambient operation.
- Control disconnect toggle switch.
- Control circuit fuses.
- Power and control circuit terminal blocks.
- 13 Amps, 220V ac socket.
- Liquid line solenoid valve.

TYPICAL CONTROL PANEL



LEGEND :

C Contactor
CF Control Fuse

CR Control Relay
CS Control Switch
CTB Control Terminal Block
F Power Circuit Fuse

OL Overload Relay
PT Power Terminal Block
MCP Micro Controller Board
TFR Transformer

SKM Packaged Air Conditioning Units PAC-V Series - R134a

Micro Automation Controller

SKM **PACV** units have built-in, as standard, the latest MICRO AUTOMATION logic controller with room temperature transmitter. This controller is simple in operation and intelligent with wide variety options. Operator control and monitoring is made extremely user friendly by means of a backlit display with four lines of 12 characters, the display of setpoints and actual values in one line and the option of changing actual values and parameters directly at the device level guarantee professional operation and satisfied users. Digital inputs / outputs and analog inputs can be expanded with its expansion modules. This controller is also communicating with standard conventional safety devices like Motor Protector Pressure Switch, etc.



MASTER MODULE



EXPANSION MODULES



ROOM TEMPERATURE TRANSMITTER

Soft comfort software means sensationally simple and fast generating and testing control programs, simulating all functions on the PC as well as testing during operation. The controller has the following features as standard:

- Built in anti recycle timer to prevent compressor short cycling.
- Auto lead/lag of compressors.
- Volt Free Contact for common Fault alarm remote indication.
- Remote start-stop point.
- Cooling/Heating functions.
- Choice of space temperature sensor or return air temperature sensor.

Following parameters can display on the controller LCD:

- Return or space air temperature.
- High pressure, low pressure alarm.
- No Air flow alarm.

Room Temperature Transmitter

Digital wall mounted temperature transmitter displays and provides space temperature & setpoint.

Features:

- Low Power Consumption.
- LCD Displays continuously shows the current space temperature.
- Selectable °F / °C temperature display.

Duct Temperature Sensor

Duct mounted type temperature sensor can be supplied instead of room temperature sensor, if required, as an option.

SKM Packaged Air Conditioning Units PAC-V Series - R134a

Optional Controller for Special Application

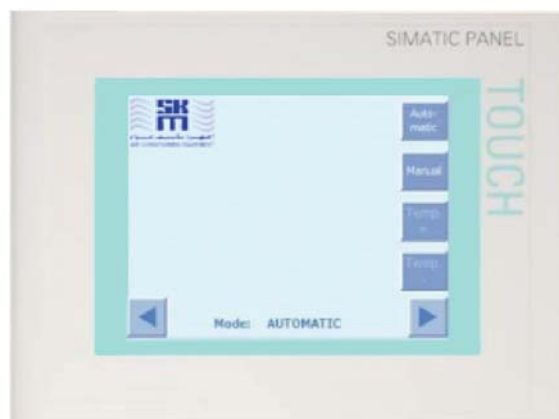
MICRO PLC

The ideal controller for those applications with sophisticated requirements where more complex logic involved such as, economizer and large tonnage **PACV** units with more options. The Micro PLC CPU combines microprocessor, an integrated power supply, input and output circuits in a compact housing to create a powerful Micro PLC. To better solve the additional requirements, the Micro PLC family includes a variety of Expansion modules, Transducers, Temperature + Humidity sensors and Micro touch display panels. This Controller is compatible to communicate with different types of BMS Protocols via gateway.

The Micro touch display (HMI) panels can be connected to the Micro PLC. This touch panel provides you with means to customize your operator interface. These devices can display custom graphics, slide bars, application variables, custom user buttons, and so forth, by means of a user friendly touch panel. This can be positioned inside the control panel with Micro PLC or supplied loose to be mounted in the space within 100 meter distance.



MICRO PLC



HMI

SKM Packaged Air Conditioning Units PAC-V Series - R134a

Optional Features

Electric Heating

(HC@)

The heater batteries listed in table-1 are the standard available for this option:

Electric heater batteries are available with finned type elements. Heating elements are constructed from high quality 80/20 nickel chrome resistance wire centered in metal tubes by compressed magnesium oxide. Helical fins tightly wound round tubular heating element.

Following components are included with electric heater option:

- 3 pole magnetic contactor per stage
- 1 primary over current protection provided by Auto reset high limit safety cut-out
- 1 secondary over current protection provided by Manual reset high limit safety cut-out for positive break
- Control fuse
- Control switch
- Power fuses per NEC if total load exceeds 48 amps
- Factory installed air flow switch

Following are the Standard Electrical Heating Option kW rating, options other than those specified below can be provided on request. Consult SKM for full details.

PACV-S		Heater kW	Stages
51008-S	61009-S	15	2
51010-S	61012-S	18	
51014-S	61018-S	30	
52015-S	62018-S		
51017-S	61020-S		
52017-S	62020-S	36	
52020-S	62024-S		
52023-S	62028-S		
52026-S	62033-S	48	
52030-S	62036-S		
52032-S	62037-S		
52038-S	62046-S	60	
52045-S	62055-S		
52050-S	62060-S		
52055-S	62066-S	90	
52065-S	62076-S		
53070-S	63085-S		
53075-S	63090-S	126	
53080-S	63095-S		
53085-S	63100-S		4
53090-S	63105-S		
53095-S	63110-S		
54100-S	64120-S	144	
54110-S	64130-S		
54115-S	64136-S		6
54125-S	64145-S		

Table 1

Alternative Condenser Material

Made of copper tubes and alternative fin material and/or protective coating.

- For Copper Fins, specify (FC).
- For electroplated Copper Fins only, specify (CFT).
- For Copper Finned Coils electroplated post manufacturing, specify (FCT).
- For Pre-Coated aluminum fins, specify (FAP).
- For Aluminum Fins with Aeris post Coat Protection, specify (FAA).
- For Copper Fins with Aeris post Coat Protection, specify (FCA).

Alternative Evaporator Material

Made of copper tubes and alternative fin material and/or protective coating.

- For Copper Fins, specify (FC).
- For electroplated Copper Fins only, specify (CFT).
- For Copper Finned Coils electroplated post manufacturing, specify (FCT).
- For Pre-Coated aluminum fins, specify (FAP).
- For Aluminum Fins with Aeris post Coat Protection, specify (FAA).
- For Copper Fins with Aeris post Coat Protection, specify (FCA).

Condenser Coil Guard

(CGP)

Wire mesh guard, in painted finish for condensers. Recommended on ground level installations where coil needs to be protected against vandalism.

Control Transformer

(CXT)

This option is necessary and available for PACV models rated for 440V/3PH/50Hz or 460V/3PH/60Hz only. When ordering for these voltages this option **must** be ordered.

Double Skin Evaporator

(DSE)

Inner skin of 0.7mm galvanized sheet in the evaporator section provided with no cold bridges. Recommended for 100% fresh air applications.

Filter Section

(FFS/VFS/BFS/FIPP)

Can be provided for flat filters or vee filters configuration for relatively higher or lower, respectively, face velocities on the filters. Bag filter section can be provided, additionally, if required.

Flat filter sections can accommodate 1" or 2" thick cleanable media aluminium or synthetic filters for particle/dust removal.

The Bag Filter section can house 22", 30" or 36" deep bag filters to meet specific requirements of efficiencies or contaminants in the air stream. Specify on enquiry / order write up.

For Pleated filter high efficiency mini pleat panel filters available in a wide range of efficiencies 65% to 95% as an alternative for bag filters, where there is a space restriction, with 4" (100mm) thick extended surface.

Hot Gas Bypass System

(GBP)

With solenoid to enable operation of a large sized unit at very low loads, during low ambients due to application requirements.

IP-55 Control Panel

(ICP)

IP55 enclosure for extra protection for the elements.

Adjustable Pitch Pulley

(VPP)

Available upon request for motors above 15 kW.

Isolated Condenser Fan Motor

(CMS)

For elimination of extraneous noise and vibrations from condenser fan motor, the motors are individually isolated from the frame.

Low Ambient Operation Kit

(LAO)

For operation down to lower than normal Gulf ambients. It is also required for special applications.

SKM Packaged Air Conditioning Units PAC-V Series - R134a

Pressure Gauges (SDG)

Suction and discharge indication of each refrigerant circuit. Gauges are mounted **outside** the Control Panel.

Pump Down Facility (PD)

The compressors will switch off each time with a Pumpdown Cycle in order to prevent Liquid refrigerant migration to the compressor during OFF Cycle periods.

With this option, each circuit will be provided with an additional discharge check valve to prevent Refrigerant Migration from High side to Low side when the compressor is off.

Stainless Steel Drain Pan (SSP)

Heavy gauge 316 stainless steel drain pan under the entire cooling coil and moisture eliminator. Insulation under drain pan as per SKM standard.

Voltage Monitoring Module (VMM)

To prevent **PACV** unit operation in the event of Phase loss, Phase reversal, and Under / Over voltage on the incoming line voltage.

Voltage Monitoring Module (DVM)

To meet DEWA Regulations, modified module with time delay relay. This option is available for Dubai, UAE only.

Electronic Expansion Valves (EEV)

To improve Energy Efficiency Ratio and to increase the range of operation conditions.

External Overload Protection (EOP)

For those electrical specification requires additional overload protection for the compressors.

Circuit Breaker for Compressor (CBC)

For those electrical specification calls for additional over load and short circuit protection.

Main Isolator (Disconnect switch) (ISO)

For the main Power Isolation.

Extra Shut Off Valve (XFV)

To fully isolate filter drier, an additional shut-off valve can be incorporated in the liquid line.

Two inch insulation for evaporator section. (2SG)

Anti Spark Fan & Belt (SPF)

For special applications like explosion proof units.

Variable Pitch Motor Pulley (VPP)

Instead of standard fixed pitch pulley, for above 15kW motors.

Sand Trap Louvre (ASL)

Inlet of 100% fresh air units or at inlet of fresh air opening of mixing box.

Condenser & Evaporator Fans with polyglycoat coating (PGF)

To give more protection for fans against corrosion.

Marine Paint (MP)

To provide increased corrosion resistance coastal environments and offshore locations.

Galvanized Frame And Base (GFB)

Steel frame and base which are hot dip galvanized after manufacturing process. This is recommended for highly corrosive environments.

Mixing Box With/Without Sand Trap Louvre and Bird Screen on Fresh Air Side. (BMX)

Micro PLC

More Powerful Micro PLC for special applications, economizers and large tonnage **PACV** units with more options. Please consult SKM.

Modular Construction

Model **PACV-51008S~53095** and **PACV-61009S~PACV-631105S** can be produced as modular constructions. Refer page no. 34 for more details.

Overlapped Evap. coil construction

Use overlapped evaporator coils to limit the height of the unit with frontal fan discharge. Available for models **PACV-54100S** to **PACV-54125S** & **PACV-64120S** to **PACV-64145S** refer to page 39.

Options for Field Installations

Anti-vibration mounts (CAVM)

Recommended for roof mounted units or other locations in the vicinity of occupied spaces, where noise/vibration may be objectionable.

Hi-Lo and Oil Pressure Gauges (CSDG)

Without piping or isolating pet cocks.

Special custom built units incorporating specially required features like units with anti-condensation resistance heaters embedded in condenser motors, explosion proof units incorporating open driven compressors etc. can be manufactured on request.

Contact SKM for all such applications or requirements.

SKM Packaged Air Conditioning Units PAC-V Series - R134a

ENGINEERING SPECIFICATIONS - 50 Hz

Model	PACV	51008-S	51010-S	51014-S	52015-S	51017-S	52017-S	52020-S	
Cooling Capacity (1)	TR	7.8	10.0	13.8	15.2	16.0	16.8	19.0	
	kW	27.4	35.2	48.5	53.5	56.3	59.1	66.8	
Cooling Capacity (2)	TR	7.2	9.2	12.7	14.0	14.8	15.4	17.5	
	kW	25.3	32.4	44.7	49.2	52.1	54.2	61.5	
Compressor	Type	Hermetic Scroll Compressor							
	Quantity	1	1	1	2	1	2	2	
	Oil Charge(Polyol Ester) CKT(1/2/3/4)	US Gal	0.95	1.64	2.11	0.95/0.95	2.11	1.64/0.95	1.64/1.64
		Liter	3.60	6.21	8.00	3.6/3.6	8.00	6.21/3.60	6.21/6.21
Condenser Coil	Type	Air cooled 2, 3 or 4 rows 14 FPI (1.8mm) fin spacing Cu tubes Al fins							
	Face Area	ft ²	19.4	19.4	24.4	24.4	24.4	24.4	29.3
		m ²	1.8	1.8	2.3	2.3	2.3	2.3	2.7
Condenser Fan	Type	Propeller direct drive 960 RPM							
	Code / Quantity	-	628/2	628/2	723/2	723/2	723/2	723/2	823/2
	Air Flow Rate	cfm	9240	8920	13240	13240	13240	13240	17880
		l/s	4361	4210	6249	6249	6249	6249	8438
Condenser Motor	Type	Totally enclosed, air over Class F insulation, 6-pole, IP-55							
	Size / Quantity	kW	0.37/2	0.37/2	0.75/2	0.75/2	0.75/2	0.75/2	1.5/2
Evaporator Coil	Type	Direct expansion, Aluminum Fins, Copper Tubes							
	Face Area	ft ²	6.7	9.2	12.5	12.5	13.6	13.6	15.0
		m ²	0.6	0.9	1.2	1.2	1.3	1.3	1.4
Evaporator Fan	Type	Centrifugal double inlet double width bell drive							
	Code / Qty.	-	N12-S	N15-S	N12-D	N12-D	N12-D	N12-D	N15-D
	Air Flow Rate	cfm	3000	4000	6000	6000	6600	6600	7500
		l/s	1416	1888	2832	2832	3115	3115	3540
Evaporator Motor	Type	Totally enclosed, Class F insulation, IP55							
	Size	kW	1.5	1.5	3.0	3.0	4.0	4.0	4.0
Refrigerant (R - 134a) Operating Charge PER circuit CKT (1/2/3/4)	lbs	12.1	16.9	22.9	12.2/12.2	23.1	14.7/11.2	14.7/14.7	
	kg	5.5	7.7	10.4	5.5/5.5	10.5	6.7/5.1	6.7/6.7	
Number of Refrigerant Circuits	-	1	1	1	2	1	2	2	
Unit Operating Weight	lbs	1049	1154	2050	2208	2175	2254	2395	
	kg	476	524	930	1001	987	1023	1086	

Model	PACV	52023-S	52026-S	52030-S	52032-S	52038-S	52045-S	52050-S	
Cooling Capacity (1)	TR	22.0	25.7	28.8	30.4	37.1	43.3	48.4	
	kW	77.4	90.4	101.3	106.9	130.5	152.3	170.2	
Cooling Capacity (2)	TR	20.2	23.7	26.5	28.0	34.2	40.0	44.6	
	kW	71.0	83.4	93.2	98.5	120.3	140.7	156.9	
Compressor	Type	Hermetic Scroll Compressor							
	Quantity	2	2	2	2	4	4	4	
	Oil Charge(Polyol Ester) CKT(1/2/3/4)	US Gal	2.11/1.64	2.11/2.11	2.11/2.11	2.11/2.11	3.28/3.28	4.22/3.28	4.22/4.22
		Liter	8.0/6.2	8.0/8.0	8.0/8.0	8.0/8.0	12.4/12.4	16/12.4	12/12
Condenser Coil	Type	Air cooled 2, 3 or 4 rows 14 FPI (1.8mm) fin spacing Cu tubes Al fins							
	Face Area	ft ²	31.5	40.0	40.0	40.0	53.3	64.0	72.0
		m ²	2.9	3.7	3.7	3.7	5.0	5.9	6.7
Condenser Fan	Type	Propeller direct drive 960 RPM							
	Code / Qty.	-	823/2	823/3	823/3	823/3	829/3	823/4	823/4
	Air Flow Rate	cfm	18180	26160	26160	26160	32040	36480	37280
		l/s	8580	12346	12346	12346	15121	17217	17594
Condenser Motor	Type	Totally enclosed, air over Class F insulation, 6-pole, IP-55							
	Size / Qty.	kW	1.5/2	1.5/3	1.5/3	1.5/3	1.5/3	1.5/4	1.5/4
Evaporator Coil	Type	Direct expansion, Aluminum Fins, Copper Tubes							
	Face Area	ft ²	18.0	20.8	25.0	25.0	29.2	34.4	37.5
		m ²	1.7	1.9	2.3	2.3	2.7	3.2	3.5
Evaporator Fan	Type	Centrifugal double inlet double width bell drive							
	Code / Qty.	-	N15-D	N15-D	N15-D	N15-D	N18-D	N18-D	N18-D
	Air Flow Rate	cfm	8800	10416	11500	11500	14580	17000	18750
		l/s	4153	4916	5427	5427	6881	8023	8849
Evaporator Motor	Type	Totally enclosed, Class F insulation, IP55							
	Size	kW	4.0	5.5	7.5	7.5	7.5	11.0	11.0
Refrigerant (R - 134a) Operating Charge PER circuit CKT (1/2/3/4)	lbs	20.1/14.4	21.4/21.4	19.1/24.6	22.2/22.2	28.6/28.6	33.7/33.7	36.1/36.1	
	kg	9.2/6.5	9.7/9.7	8.7/11.2	10.1/10.1	13.0/13.0	15.3/15.3	16.4/16.4	
Number of Refrigerant Circuits	-	2	2	2	2	2	2	2	
Unit Operating Weight	lbs	2553	3133	3228	3248	3648	4392	4708	
	kg	1158	1421	1464	1473	1655	1992	2135	

Table 2

Notes:

- Capacity ratings are based on AHRI Standard 340/360. Evaporator entering air conditions of 80°/67°F (27°/19.5°C) dry bulb/wet bulb and condenser entering air temperature of 95°F (35°C) dry bulb.
- Evaporator entering air conditions of 80°/67°F (27°/19.5°C) dry bulb/wet bulb and condenser entering air temperature of 115°F (46°C) dry bulb.
- Capacity is gross capacity which does not include the effect of evaporator fan motor heat.

SKM Packaged Air Conditioning Units PAC-V Series - R134a

ENGINEERING SPECIFICATIONS - 50 Hz

Model	PACV	52055-S	52065-S	53070-S	53075-S	53080-S	53085-S	
Cooling Capacity (1)	TR	55.5	64.2	69.7	74.8	77.6	84.4	
	kW	195.2	225.8	245.1	263.1	272.9	296.8	
Cooling Capacity (2)	TR	51.1	59.0	64.0	68.8	71.2	77.7	
	kW	179.7	207.5	225.1	242.0	250.4	273.3	
Compressor	Type	Hermetic Scroll Compressor						
	Quantity	4						
	Oil Charge(Polyol Ester)	US Gal	4.22/4.22	4.22/4.22	3.75/3.75/3.75	4.2/4.2/4.2	4.2/4.2/4.2	4.2/4.2/4.2
	CKT(1/2/3/4)	Liter	12/12	12/12	14.2/14.2/14.2	16/16/16	16/16/16	16/16/16
Condenser Coil	Type	Air cooled 2, 3 or 4 rows 14 FPI (1.8mm) fin spacing Cu tubes Al fins						
	Face Area	ft²	72.0	72.0	97.5	97.5	97.5	97.5
		m²	6.7	6.7	9.1	9.1	9.1	9.1
Condenser Fan	Type	Propeller direct drive 960 RPM						
	Code / Quantity	-	829/4	829/4	823/6	823/6	823/6	829/6
	Air Flow Rate	cfm	42880	40920	54900	54900	54900	59340
		l/s	20237	19312	25910	25910	25910	28005
Condenser Motor	Type	Totally enclosed, air over Class F insulation, 6-pole, IP-55						
	Size / Quantity	kW	1.5/4	1.5/4	1.5/6	1.5/6	1.5/6	1.5/6
Evaporator Coil	Type	Direct expansion, Aluminum Fins, Copper Tubes						
	Face Area	ft²	40.0	49.0	55.1	55.1	61.2	63.7
		m²	3.7	4.6	5.1	5.1	5.7	5.9
Evaporator Fan	Type	Centrifugal double inlet double width belt drive						
	Code / Qty.	-	N18-D	N710-S	N800-S	N800-S	N800-S	N900-S
	Air Flow Rate	cfm	18750	23000	25600	25600	28400	30000
		l/s	8849	10855	12082	12082	13403	14158
Evaporator Motor	Type	Totally enclosed, Class F insulation, IP55						
	Size	kW	11.0	15.0	15.0	15.0	15.0	15.0
Refrigerant (R - 134a) Operating Charge PER circuit CKT (1/2/3/4)	lbs	56.9/56.9	72.2/72.2	51.8/51.8/51.8	53.5/53.5/53.5	56.0/56.0/56.0	71.8/71.8/61.5	
	kg	25.9/25.9	32.8/32.8	23.5/23.5/23.5	24.3/24.3/24.3	25.5/25.5/25.5	32.6/32.6/28.0	
Number of Refrigerant Circuits	-	2	2	3	3	3	3	
Unit Operating Weight	lbs	5056	7720	8759	9149	9316	9895	
	kg	2294	3502	3973	4150	4226	4488	

Model	PACV	53090-S	53095-S	54100-S	54110-S	54115-S	54125-S	
Cooling Capacity (1)	TR	89.4	93.0	100.0	108.0	113.4	121.1	
	kW	314.4	327.1	351.7	379.8	398.8	425.9	
Cooling Capacity (2)	TR	82.2	89.3	92.2	99.7	104.6	111.6	
	kW	289.1	314.1	324.3	350.6	367.9	392.5	
Compressor	Type	Hermetic Scroll Compressor						
	Quantity	6						
	Oil Charge(Polyol Ester)	US Gal	4.2/4.2/4.2	4.2/4.2/4.2	4.2/4.2/4.2/4.2	4.2/4.2/4.2/4.2	4.2/4.2/4.2/4.2	4.2/4.2/4.2/4.2
	CKT(1/2/3/4)	Liter	16/16/16	16/16/16	16/16/16/16	16/16/16/16	16/16/16/16	16/16/16/16
Condenser Coil	Type	Air cooled 2, 3 or 4 rows 14 FPI (1.8mm) fin spacing Cu tubes Al fins						
	Face Area	ft²	97.5	97.5	130.0	130.0	130.0	130.0
		m²	9.1	9.1	12.1	12.1	12.1	12.1
Condenser Fan	Type	Propeller direct drive 960 RPM						
	Code / Qty.	-	829/6	829/6	829/8	829/8	829/8	829/8
	Air Flow Rate	cfm	59340	59340	83360	79120	79120	79120
		l/s	28005	28005	39342	37340	37340	37340
Condenser Motor	Type	Totally enclosed, air over Class F insulation, 6-pole, IP-55						
	Size / Qty.	kW	1.5/6	1.5/6	1.5/8	1.5/8	1.5/8	1.5/8
Evaporator Coil	Type	Direct expansion, Aluminum Fins, Copper Tubes						
	Face Area	ft²	67.5	71.9	73.7	76.2	80.0	85.0
		m²	6.3	6.7	6.9	7.1	7.4	7.9
Evaporator Fan	Type	Centrifugal double inlet double width belt drive						
	Code / Qty.	-	N900-S	N900-S	N900-S	N900-S	N900-S	N900-S
	Air Flow Rate	cfm	31500	33500	33500	35000	37000	40000
		l/s	14866	15810	15810	16518	17462	18878
Evaporator Motor	Type	Totally enclosed, Class F insulation, IP55						
	Size	kW	15.0	18.5	18.5	18.5	18.5	22.0
Refrigerant (R - 134a) Operating Charge PER circuit CKT (1/2/3/4)	lbs	78.8/68.0/68.0	77.7/77.7/66.6	55.2/55.2/55.2/55.2	73.0/73.0/73.0/54.7	85.5/66.5/66.5/66.5	73.6/73.6/73.6/73.6	
	kg	35.8/31.0/31.0	35.3/35.3/30.3	25.1/25.1/25.1/25.1	33.2/33.2/33.2/24.9	38.8/30.2/30.2/30.2	33.3/33.3/33.3/33.3	
Number of Refrigerant Circuits	-	3	3	4	4	4	4	
Unit Operating Weight	lbs	10045	10236	12796	13222	13357	13564	
	kg	4556	4643	5804	5998	6059	6153	

Table 2 ends

Notes:

- Capacity ratings are based on AHRI Standard 340/360. Evaporator entering air conditions of 80°/67°F (27°/19.5°C) dry bulb/wet bulb and condenser entering air temperature of 95°F (35°C) dry bulb.
- Evaporator entering air conditions of 80°/67°F (27°/19.5°C) dry bulb/wet bulb and condenser entering air temperature of 115°F (46°C) dry bulb.
- Capacity is gross capacity which does not include the effect of evaporator fan motor heat.



SKM Packaged Air Conditioning Units PAC-V Series - R134a

ENGINEERING SPECIFICATIONS - 60 Hz

Model	PACV	61009-S	61012-S	61018-S	62018-S	61020-S	62020-S	62024-S	
Cooling Capacity (1)	TR	9.0	11.6	16.1	17.6	18.6	19.4	22.0	
	kW	31.7	40.8	56.6	61.9	65.4	68.2	77.4	
Cooling Capacity (2)	TR	8.3	10.7	14.9	16.2	17.2	17.9	20.3	
	kW	29.2	37.6	52.4	57.0	60.5	63.0	71.4	
Compressor	Type	Hermetic Scroll Compressor							
	Quantity	1	1	1	2	1	2	2	
	Oil Charge(Polyol Ester) CKT(1/2/3/4)	US Gal	0.95	1.64	2.11	0.95/0.95	2.11	1.64/0.95	1.64/1.64
	Liter	3.60	6.21	8.00	3.6/3.6	8.00	6.21/3.60	6.21/6.21	
Condenser Coil	Type	Air cooled 2, 3 or 4 rows 14 FPI (1.8mm) fin spacing Cu tubes Al fins							
	Face Area	ft ²	19.4	19.4	24.4	24.4	24.4	24.4	29.3
		m ²	1.8	1.8	2.3	2.3	2.3	2.3	2.7
Condenser Fan	Type	Propeller direct drive 1150 RPM							
	Code / Quantity	-	628/2	628/2	723/2	723/2	723/2	723/2	823/2
	Air Flow Rate	cfm	11200	10820	15660	15660	15660	15660	21760
		l/s	5286	5106	7391	7391	7391	7391	10270
Condenser Motor	Type	Totally enclosed, air over Class F insulation, 6-pole, IP-55							
	Size / Quantity	kW	0.55/2	0.55/2	1.1/2	1.1/2	1.1/2	1.1/2	2.2/2
Evaporator Coil	Type	Direct expansion, Aluminum Fins, Copper Tubes							
	Face Area	ft ²	6.7	9.2	12.5	12.5	13.6	13.6	15.0
		m ²	0.6	0.9	1.2	1.2	1.3	1.3	1.4
Evaporator Fan	Type	Centrifugal double inlet double width belt drive							
	Code / Qty.	-	N12-S	N15-S	N12-D	N12-D	N12-D	N12-D	N15-D
	Air Flow Rate	cfm	3000	4000	6000	6000	6600	6600	7500
		l/s	1416	1888	2832	2832	3115	3115	3540
Evaporator Motor	Type	Totally enclosed, Class F insulation, IP55							
	Size	kW	1.5	2.2	3.0	3.0	4.0	4.0	4.0
Refrigerant (R - 134a) Operating Charge PER circuit CKT (1/2/3/4)	lbs	12.8	17.6	24.0	12.7/12.7	24.2	15.3/11.7	15.3/15.3	
	kg	5.8	8.0	10.9	5.8/5.8	11.0	7.0/5.3	7.0/7.0	
Number of Refrigerant Circuits	-	1	1	1	2	1	2	2	
Unit Operating Weight	lbs	1067	1190	2078	2235	2204	2282	2438	
	kg	484	540	942	1014	1000	1035	1106	

Model	PACV	62028-S	62033-S	62036-S	62037-S	62046-S	62055-S	62060-S	
Cooling Capacity (1)	TR	25.6	30.1	33.5	35.2	43.0	51.3	57.5	
	kW	90.0	105.9	117.8	123.8	151.2	180.4	202.2	
Cooling Capacity (2)	TR	23.6	27.8	30.9	32.5	39.7	47.3	53.0	
	kW	83.0	97.8	108.7	114.3	139.6	166.4	186.4	
Compressor	Type	Hermetic Scroll Compressor							
	Quantity	2	2	2	2	4	4	4	
	Oil Charge(Polyol Ester) CKT(1/2/3/4)	US Gal	2.11/1.64	2.11/2.11	2.11/2.11	2.11/2.11	3.28/3.28	4.22/3.28	4.22/4.22
	Liter	8.0/6.2	8.0/8.0	8.0/8.0	8.0/8.0	12.4/12.4	16/12.4	12/12	
Condenser Coil	Type	Air cooled 2, 3 or 4 rows 14 FPI (1.8mm) fin spacing Cu tubes Al fins							
	Face Area	ft ²	31.5	40.0	40.0	40.0	53.3	64.0	72.0
		m ²	2.9	3.7	3.7	3.7	5.0	5.9	6.7
Condenser Fan	Type	Propeller direct drive 1150 RPM							
	Code / Qty.	-	823/2	823/3	823/3	823/3	829/3	823/4	823/4
	Air Flow Rate	cfm	22120	31860	31860	31860	38700	44400	45400
		l/s	10439	15036	15036	15036	18264	20954	21426
Condenser Motor	Type	Totally enclosed, air over Class F insulation, 6-pole, IP-55							
	Size / Qty.	kW	2.2/2	2.2/3	2.2/3	2.2/3	2.2/3	2.2/4	2.2/4
Evaporator Coil	Type	Direct expansion, Aluminum Fins, Copper Tubes							
	Face Area	ft ²	18.0	20.8	25.0	25.0	29.2	34.4	37.5
		m ²	1.7	1.9	2.3	2.3	2.7	3.2	3.5
Evaporator Fan	Type	Centrifugal double inlet double width belt drive							
	Code / Qty.	-	N15-D	N15-D	N15-D	N15-D	N18-D	N18-D	N18-D
	Air Flow Rate	cfm	8800	10416	11500	11500	14580	17000	18750
		l/s	4153	4916	5427	5427	6881	8023	8849
Evaporator Motor	Type	Totally enclosed, Class F insulation, IP55							
	Size	kW	4.0	5.5	7.5	7.5	7.5	11.0	15.0
Refrigerant (R - 134a) Operating Charge PER circuit CKT (1/2/3/4)	lbs	21.0/15.0	22.3/22.3	20.0/25.8	23.3/23.3	29.8/29.8	49.0/49.0	52.9/52.9	
	kg	9.6/6.8	10.2/10.2	9.1/11.7	10.6/10.6	13.6/13.6	22.3/22.3	24.0/24.0	
Number of Refrigerant Circuits	-	2	2	2	2	2	2	2	
Unit Operating Weight	lbs	2634	3195	3297	3383	3723	4767	5282	
	kg	1195	1449	1495	1534	1689	2162	2396	

Notes:

- Capacity ratings are based on AHRI Standard 340/360. Evaporator entering air conditions of 80°/67°F (27°/19.5°C) dry bulb/wet bulb and condenser entering air temperature of 95°F (35°C) dry bulb.
- Evaporator entering air conditions of 80°/67°F (27°/19.5°C) dry bulb/wet bulb and condenser entering air temperature of 115°F (46°C) dry bulb.
- Capacity is gross capacity which does not include the effect of evaporator fan motor heat.

Table 3

SKM Packaged Air Conditioning Units PAC-V Series - R134a

ENGINEERING SPECIFICATIONS - 60 Hz

Model	PACV	62066-S	62076-S	63085-S	63090-S	63095-S	63100-S	
Cooling Capacity (1)	TR	64.1	74.1	80.8	89.8	90.1	97.9	
	kW	225.4	260.6	284.2	315.8	316.9	344.3	
Cooling Capacity (2)	TR	59.1	68.2	74.3	80.0	82.9	90.2	
	kW	207.9	239.9	261.3	281.4	291.6	317.2	
Compressor	Type	Hermetic Scroll Compressor						
	Quantity	4						
	Oil Charge(Polyol Ester) CKT(1/2/3/4)	US Gal	4.2/4.2/2.2	4.2/4.2/2.2	3.75/3.75/3.75	4.2/4.2/4.2	4.2/4.2/4.2	4.2/4.2/4.2
		Liter	12/12	12/12	14.2/14.2/14.2	16/16/16	16/16/16	16/16/16
Condenser Coil	Type	Air cooled 2 , 3 or 4 rows 14 FPI (1.8mm) fin spacing Cu tubes Al fins						
	Face Area	ft²	72.0	72.0	97.5	97.5	97.5	97.5
		m²	6.7	6.7	9.1	9.1	9.1	9.1
Condenser Fan	Type	Propeller direct drive 1150 RPM						
	Code / Quantity	829/4						
	Air Flow Rate	cfm	51760	51040	66840	66840	66840	72000
		l/s	24428	24088	31545	31545	31545	33980
Condenser Motor	Type	Totally enclosed, air over Class F insulation, 6-pole, IP-55						
	Size / Quantity	kW	2.2/4	2.2/4	2.2/6	2.2/6	2.2/6	2.2/6
Evaporator Coil	Type	Direct expansion, Aluminum Fins, Copper Tubes						
	Face Area	ft²	40.0	49.0	55.1	55.1	61.2	63.7
		m²	3.7	4.6	5.1	5.1	5.7	5.9
Evaporator Fan	Type	Centrifugal double inlet double width belt drive						
	Code / Qty.	N18-D						
	Air Flow Rate	cfm	18750	23000	25600	25600	28400	30000
l/s		8849	10855	12082	12082	13403	14158	
Evaporator Motor	Type	Totally enclosed, Class F insulation, IP55						
	Size	kW	15.0	15.0	15.0	15.0	15.0	15.0
Refrigerant (R - 134a) Operating Charge PER circuit CKT (1/2/3/4)	lbs	61.8/61.8	78.2/78.2	56.3/56.3/56.3	57.9/57.9/57.9	61.0/61.0/61.0	77.2/77.2/66.2	
	kg	28.1/28.1	35.5/35.5	25.6/25.6/25.6	26.3/26.3/26.3	27.7/27.7/27.7	35.1/35.1/30.1	
Number of Refrigerant Circuits	-	2		3		3		
Unit Operating Weight	lbs	5470	8027	8963	9354	9538	10122	
	kg	2481	3641	4066	4243	4327	4592	

Model	PACV	63105-S	63110-S	64120-S	64130-S	64136-S	64145-S	
Cooling Capacity (1)	TR	103.3	107.4	116.1	125.2	131.0	139.6	
	kW	363.3	377.7	408.3	440.3	460.7	491.0	
Cooling Capacity (2)	TR	95.2	98.9	107.1	115.7	121.0	128.7	
	kW	334.8	347.8	376.7	406.9	425.6	452.6	
Compressor	Type	Hermetic Scroll Compressor						
	Quantity	6						
	Oil Charge(Polyol Ester) CKT(1/2/3/4)	US Gal	4.2/4.2/4.2	4.2/4.2/4.2	4.2/4.2/4.2/4.2	4.2/4.2/4.2/4.2	4.2/4.2/4.2/4.2	
		Liter	16/16/16	16/16/16	16/16/16/16	16/16/16/16	16/16/16/16	
Condenser Coil	Type	Air cooled 2 , 3 or 4 rows 14 FPI (1.8mm) fin spacing Cu tubes Al fins						
	Face Area	ft²	97.5	97.5	130.0	130.0	130.0	130.0
		m²	9.1	9.1	12.1	12.1	12.1	12.1
Condenser Fan	Type	Propeller direct drive 1150 RPM						
	Code / Qty.	829/6						
	Air Flow Rate	cfm	72000	72000	100880	96000	96000	96000
		l/s	33980	33980	47610	45307	45307	45307
Condenser Motor	Type	Totally enclosed, air over Class F insulation, 6-pole, IP-55						
	Size / Qty.	kW	2.2/6	2.2/6	2.2/8	2.2/8	2.2/8	2.2/8
Evaporator Coil	Type	Direct expansion, Aluminum Fins, Copper Tubes						
	Face Area	ft²	67.5	71.9	73.7	76.2	80.0	85.0
		m²	6.3	6.7	6.9	7.1	7.4	7.9
Evaporator Fan	Type	Centrifugal double inlet double width belt drive						
	Code / Qty.	N900-S						
	Air Flow Rate	cfm	31500	33500	33500	35000	37000	40000
l/s		14866	15810	15810	16518	17462	18878	
Evaporator Motor	Type	Totally enclosed, Class F insulation, IP55						
	Size	kW	15.0	18.5	18.5	18.5	18.5	22.0
Refrigerant (R - 134a) Operating Charge PER circuit CKT (1/2/3/4)	lbs	84.8/73.3/73.3	83.8/83.8/71.9	59.7/59.7/59.7	77.9/77.9/77.9/58.5	91.3/71.0/71.0/71.0	78.3/78.3/78.3/78.3	
	kg	38.6/33.3/33.3	38.1/38.1/32.7	27.1/27.1/27.1/27.1	35.4/35.4/35.4/26.6	41.5/32.3/32.3/32.3	35.6/35.6/35.6/35.6	
Number of Refrigerant Circuits	-	3		4		4		
Unit Operating Weight	lbs	10282	10485	13069	13502	13645	13867	
	kg	4664	4756	5928	6124	6189	6290	

Notes:

- Capacity ratings are based on AHRI Standard 340/360. Evaporator entering air conditions of 80°/67°F (27°/19.5°C) dry bulb/wet bulb and condenser entering air temperature of 95°F (35°C) dry bulb.
- Evaporator entering air conditions of 80°/67°F (27°/19.5°C) dry bulb/wet bulb and condenser entering air temperature of 115°F (46°C) dry bulb.
- Capacity is gross capacity which does not include the effect of evaporator fan motor heat.

Table 3 ends



You name it.....We cool it

SKM Packaged Air Conditioning Units PAC-V Series - R134a

GROSS CAPACITY RATINGS - 50 Hz

Model	AFR cfm /s (BPF)	Condenser Entering Air Temperature																					
		EWB			95°F (35°C)			105°F (41°C)			115°F (46°C)			125°F (52°C)									
		*F	*C	Total Capacity	Sensible Capacity	PI	Total Capacity	Sensible Capacity	PI	Total Capacity	Sensible Capacity	PI	Total Capacity	Sensible Capacity	PI								
51008-S	2333	62.00	16.70	80.40	23.60	72.00	21.10	6.30	77.30	22.70	70.70	20.70	7.20	74.10	21.70	69.30	20.30	8.10	70.80	20.80	67.90	19.90	9.00
	1101	67.00	19.40	88.30	25.90	60.10	17.60	6.50	85.00	24.90	58.90	17.30	7.40	81.60	23.90	57.60	16.90	8.30	78.10	22.90	56.20	16.50	9.20
	0.06	72.00	22.20	95.80	28.10	47.80	14.00	6.60	92.30	27.10	46.60	13.60	7.50	88.70	26.00	45.30	13.30	8.50	85.00	24.90	44.00	12.90	9.30
	3000	62.00	16.70	85.00	24.90	83.20	24.40	6.40	81.60	23.90	81.60	23.90	7.30	78.10	22.90	78.10	22.90	8.20	74.50	21.80	74.50	21.80	9.10
	1416	67.00	19.40	93.50	27.40	68.60	20.10	6.60	89.90	26.40	67.20	19.70	7.50	86.20	25.30	65.80	19.30	8.40	82.30	24.10	64.40	18.90	9.30
	0.08	72.00	22.20	101.60	29.80	53.30	15.60	6.70	97.80	28.70	52.00	15.30	7.60	93.80	27.50	50.80	14.90	8.60	89.70	26.30	49.40	14.50	9.40
	3667	62.00	16.70	88.10	25.80	88.10	25.80	6.50	84.50	24.80	84.50	24.80	7.30	80.80	23.70	80.80	23.70	8.30	77.00	22.60	77.00	22.60	9.10
	1730	67.00	19.40	97.10	28.50	76.10	22.30	6.60	93.30	27.30	74.80	21.90	7.50	89.30	26.20	73.40	21.50	8.50	85.20	25.00	71.90	21.10	9.30
	0.1	72.00	22.20	105.60	30.90	58.30	17.10	6.80	101.50	29.80	57.00	16.70	7.70	-	-	-	-	-	-	-	-	-	-
	51010-S	3208	62.00	16.70	104.40	30.60	96.40	28.30	7.70	100.40	29.40	94.70	27.80	8.70	96.10	28.20	92.90	27.20	9.70	91.80	26.90	91.10	26.70
1514		67.00	19.40	114.60	33.60	80.10	23.50	7.80	110.40	32.40	78.50	23.00	8.80	105.90	31.00	76.80	22.50	9.90	101.40	29.70	75.10	22.00	10.90
0.06		72.00	22.20	124.30	36.40	63.10	18.50	8.00	119.80	35.10	61.60	18.00	9.00	115.10	33.70	59.90	17.60	10.10	110.40	32.40	58.40	17.10	11.00
4000		62.00	16.70	109.30	32.00	109.30	32.00	7.80	105.00	30.80	105.00	30.80	8.70	100.50	29.40	100.50	29.40	9.80	95.90	28.10	95.90	28.10	10.80
1888		67.00	19.40	120.30	35.20	89.90	26.40	7.90	115.70	33.90	88.20	25.90	8.90	110.80	32.50	86.50	25.30	10.00	106.00	31.10	84.70	24.80	11.00
0.07		72.00	22.20	130.50	38.30	69.60	20.40	8.10	125.70	36.80	68.00	19.90	9.10	120.60	35.30	66.30	19.40	10.20	-	-	-	-	-
5042		62.00	16.70	113.80	33.30	113.80	33.30	7.80	109.20	32.00	109.20	32.00	8.80	104.30	30.60	104.30	30.60	9.90	99.50	29.20	99.50	29.20	10.90
2379		67.00	19.40	125.30	36.70	101.80	29.80	8.00	120.40	35.30	100.00	29.30	9.00	115.20	33.80	98.20	28.80	10.10	110.10	32.30	96.40	28.30	11.00
0.1		72.00	22.20	136.10	39.90	77.20	22.60	8.20	-	-	-	-	-	-	-	-	-	-	-	-	-	-	-
51014-S		4375	62.00	16.70	140.10	41.10	130.50	38.30	10.60	134.90	39.50	128.30	37.60	11.90	129.30	37.90	126.00	36.90	13.20	123.60	36.20	123.60	36.20
	2065	67.00	19.40	154.30	45.20	108.40	31.80	10.90	148.60	43.60	106.30	31.10	12.20	142.70	41.80	104.10	30.50	13.50	136.60	40.00	101.80	29.80	14.80
	0.06	72.00	22.20	167.80	49.20	85.50	25.00	11.10	161.70	47.40	83.40	24.40	12.40	155.50	45.60	81.20	23.80	13.80	149.00	43.70	79.10	23.20	15.10
	6000	62.00	16.70	149.50	43.80	149.50	43.80	10.80	143.60	42.10	143.60	42.10	12.10	137.50	40.30	137.50	40.30	13.40	131.20	38.40	131.20	38.40	14.70
	2831	67.00	19.40	165.10	48.40	128.30	37.60	11.10	158.70	46.50	126.00	36.90	12.40	152.10	44.60	123.60	36.20	13.70	145.20	42.60	121.20	35.50	15.00
	0.08	72.00	22.20	179.80	52.70	98.60	28.90	11.30	173.10	50.70	96.40	28.20	12.70	-	-	-	-	-	-	-	-	-	-
	6875	62.00	16.70	152.90	44.80	152.90	44.80	10.90	146.80	43.00	146.80	43.00	12.10	140.40	41.20	140.40	41.20	13.50	133.90	39.20	133.90	39.20	14.80
	3244	67.00	19.40	169.00	49.50	138.10	40.50	11.10	162.80	47.60	135.70	39.80	12.40	155.50	45.60	133.30	39.10	13.80	148.30	43.50	130.80	38.20	15.10
	0.1	72.00	22.20	184.30	54.00	104.90	30.70	11.40	-	-	-	-	-	-	-	-	-	-	-	-	-	-	-
	52015-S	4375	62.00	16.70	155.30	45.50	137.10	40.20	13.00	149.40	43.80	134.50	39.40	14.70	143.20	42.00	131.80	38.60	16.60	136.80	40.10	129.10	37.80
2065		67.00	19.40	170.40	49.90	114.70	33.60	13.30	164.10	48.10	112.20	32.90	15.10	157.50	46.20	109.70	32.10	17.00	150.60	44.10	107.00	31.40	18.70
0.06		72.00	22.20	184.70	54.10	91.30	26.80	13.60	178.00	52.20	89.00	26.10	15.40	171.00	50.10	86.60	25.40	17.30	163.70	48.00	84.10	24.60	19.00
6000		62.00	16.70	166.40	48.80	164.10	48.10	13.20	159.80	46.80	159.80	46.80	15.00	152.90	44.80	152.90	44.80	16.90	145.70	42.70	145.70	42.70	18.60
2831		67.00	19.40	183.00	53.60	134.90	39.60	13.60	175.90	51.60	132.30	38.80	15.40	168.50	49.40	129.60	38.00	17.20	160.80	47.10	126.80	37.20	18.90
0.08		72.00	22.20	198.60	58.20	104.70	30.70	13.90	191.10	56.00	102.20	30.00	15.80	183.30	53.70	99.70	29.20	17.60	175.10	51.30	97.00	28.40	19.20
6875		62.00	16.70	170.50	50.00	170.50	50.00	13.30	163.60	47.90	163.60	47.90	15.10	156.40	45.80	156.40	45.80	16.90	149.00	43.70	149.00	43.70	18.60
3244		67.00	19.40	187.60	55.00	144.80	42.40	13.70	180.20	52.80	142.10	41.60	15.50	172.60	50.60	139.40	40.80	17.30	164.50	48.20	136.50	40.00	19.00
0.1		72.00	22.20	203.80	59.70	111.20	32.60	14.00	195.90	57.40	108.60	31.80	15.90	187.70	55.00	106.00	31.10	17.70	183.50	53.80	104.60	30.70	18.60
4769		62.00	16.70	163.40	47.90	146.90	43.00	13.70	157.20	46.10	144.20	42.30	15.40	150.70	44.20	141.40	41.40	17.10	144.10	42.20	138.60	40.60	18.70
51017-S	2250	67.00	19.40	179.20	52.50	122.50	35.90	14.10	172.60	50.60	119.90	35.10	15.80	165.70	48.60	117.20	34.40	17.60	158.80	46.60	114.60	33.60	19.10
	0.06	72.00	22.20	194.20	56.90	97.10	28.50	14.50	187.20	54.90	94.70	27.70	16.20	180.00	52.80	92.20	27.00	18.00	172.80	50.70	89.70	26.30	19.60
	6000	62.00	16.70	174.90	51.30	174.90	51.30	14.00	168.00	49.20	168.00	49.20	15.70	160.70	47.10	160.70	47.10	17.40	153.50	45.00	153.50	45.00	19.00
	3115	67.00	19.40	192.30	56.40	145.00	42.50	14.50	184.90	54.20	142.30	41.70	16.20	177.30	52.00	139.50	40.90	17.90	169.60	49.70	136.70	40.10	19.50
	0.08	72.00	22.20	208.80	61.20	111.90	32.80	14.90	200.90	58.90	109.40	32.10	16.70	192.90	56.50	106.80	31.30	18.40	188.90	55.40	105.50	30.90	19.20
	7494	62.00	16.70	178.70	52.40	178.70	52.40	14.10	171.50	50.30	171.50	50.30	15.80	164.10	48.10	164.10	48.10	17.50	156.60	45.90	156.60	45.90	19.10
	3536	67.00	19.40	196.70	57.60	154.90	45.40	14.60	189.00	55.40	152.20	44.60	16.30	181.10	53.10	149.40	43.80	18.00	173.10	50.70	146.60	43.00	19.60
	0.1	72.00	22.20	213.60	62.60	118.40	34.70	15.00	205.50	60.20	115.80	33.90	16.80	-	-	-	-	-	-	-	-	-	-
	4769	62.00	16.70	170.90	50.10	150.20	44.00	14.80	164.30	48.20	147.30	43.20	16.70	157.40	46.10	144.30	42.30	18.70	150.40	44.10	141.30	41.40	20.50
	2250	67.00	19.40	187.20	54.90	125.60	36.80	15.20	180.20	52.80	122.80	36.00											

SKM Packaged Air Conditioning Units PAC-V Series - R134a

GROSS CAPACITY RATINGS - 50 Hz

Model	AFR cfm l/s (BPF)	EWB		Condenser Entering Air Temperature																			
				95°F (35°C)				105°F (41°C)				115°F (46°C)				125°F (52°C)							
				Total Capacity		Sensible Capacity		Total Capacity		Sensible Capacity		Total Capacity		Sensible Capacity		Total Capacity		Sensible Capacity					
				MBh	kW	MBh	kW	MBh	kW	MBh	kW	MBh	kW	MBh	kW	MBh	kW	MBh	kW				
52030-S	8750	62.00	16.70	296.30	86.80	267.90	78.50	24.80	285.00	83.50	263.10	77.10	27.80	273.20	80.10	258.00	75.60	30.90	261.20	76.50	253.00	74.10	33.70
	4129	67.00	19.40	325.20	95.30	223.30	65.40	25.50	313.10	91.80	218.60	64.10	28.60	300.60	88.10	213.80	62.70	31.60	287.90	84.40	209.00	61.30	34.50
	0.06	72.00	22.20	352.60	103.30	176.80	51.80	26.20	339.80	99.60	172.40	50.50	29.30	326.70	95.70	167.90	49.20	32.40	313.30	91.80	163.30	47.90	35.10
	11500	62.00	16.70	314.00	92.00	313.60	91.90	25.30	301.60	88.40	301.60	88.40	28.20	288.70	84.60	288.70	84.60	31.30	275.60	80.80	275.60	80.80	34.10
	5427	67.00	19.40	345.40	101.20	257.50	75.50	26.00	332.20	97.40	252.50	74.00	29.10	318.40	93.30	247.50	72.50	32.20	304.50	89.20	242.40	71.00	34.90
	0.08	72.00	22.20	375.10	109.90	199.30	58.40	26.80	361.00	105.80	194.70	57.10	29.90	346.50	101.60	190.00	55.70	32.90	339.20	99.40	187.60	55.00	34.30
	13750	62.00	16.70	323.90	94.90	323.90	94.90	25.50	310.80	91.10	310.80	91.10	28.50	297.30	87.10	297.30	87.10	31.60	283.60	83.10	283.60	83.10	34.30
	6489	67.00	19.40	356.70	104.60	282.80	82.90	26.30	342.80	100.50	277.90	81.40	29.40	328.20	96.20	272.70	79.90	32.40	313.50	91.90	267.50	78.40	35.10
	0.1	72.00	22.20	387.70	113.60	215.90	63.30	27.10	372.90	109.30	211.10	61.90	30.20	-	-	-	-	-	-	-	-	-	-
	8750	62.00	16.70	313.10	91.80	275.30	80.70	27.90	301.10	88.30	270.10	79.20	31.30	288.70	84.60	264.70	77.60	34.70	276.20	81.00	259.30	76.00	37.90
4129	67.00	19.40	342.90	100.50	230.30	67.50	28.80	330.20	96.80	225.20	66.00	32.20	317.10	92.90	220.10	64.50	35.70	304.00	89.10	215.10	63.00	38.80	
0.06	72.00	22.20	371.10	108.80	183.30	53.70	29.60	357.70	104.90	178.60	52.40	33.10	344.00	100.80	173.90	51.00	36.60	330.40	96.90	169.20	49.60	39.60	
11500	62.00	16.70	332.50	97.40	321.30	94.20	28.50	319.30	93.60	315.80	92.60	31.90	305.70	89.60	305.70	89.60	35.30	292.10	85.60	292.10	85.60	38.40	
5427	67.00	19.40	364.80	106.90	264.80	77.60	29.50	350.90	102.80	259.50	76.10	32.90	336.50	98.60	254.10	74.50	36.30	322.30	94.50	248.90	73.00	39.30	
0.08	72.00	22.20	395.40	115.90	206.10	60.40	30.40	380.70	111.60	201.20	59.00	33.90	365.70	107.20	196.20	57.50	37.30	350.90	102.80	191.40	56.10	40.20	
13750	62.00	16.70	343.30	100.60	343.30	100.60	28.80	329.40	96.60	329.40	96.60	32.20	315.20	92.40	315.20	92.40	35.60	300.90	88.20	300.90	88.20	38.70	
6489	67.00	19.40	377.10	110.50	290.20	85.10	29.80	362.40	106.20	284.90	83.50	33.30	347.40	101.80	279.50	81.90	36.70	332.40	97.40	274.20	80.40	39.60	
0.1	72.00	22.20	409.10	119.90	222.80	65.30	30.80	393.50	115.30	217.80	63.80	34.30	377.70	110.70	212.70	62.30	37.70	369.90	108.40	210.20	61.40	39.20	
10208	62.00	16.70	375.60	110.10	325.70	95.50	31.90	361.20	105.90	319.40	93.60	36.00	346.10	101.40	312.80	91.70	40.20	331.10	97.10	306.30	89.80	44.10	
4817	67.00	19.40	411.00	120.50	273.00	80.00	32.70	395.80	116.00	267.00	78.30	36.80	379.90	111.40	260.70	76.40	41.00	364.40	106.80	254.70	74.60	44.80	
0.06	72.00	22.20	444.50	130.30	218.00	63.90	33.40	428.50	125.60	212.30	62.20	37.60	411.90	120.70	206.50	60.50	41.80	395.90	116.00	200.90	58.90	45.40	
14580	62.00	16.70	405.80	118.90	398.00	116.60	32.60	389.50	114.20	389.50	114.20	36.70	372.60	109.20	372.60	109.20	40.90	356.00	104.40	356.00	104.40	44.60	
6880	67.00	19.40	445.10	130.50	327.00	95.90	33.40	427.80	125.40	320.50	93.90	37.60	410.00	120.20	314.00	92.00	41.70	392.90	115.10	307.70	90.20	45.30	
0.09	72.00	22.20	482.00	141.30	253.60	74.30	34.20	463.70	135.90	247.60	72.60	38.40	445.20	130.50	241.50	70.80	42.50	427.50	125.30	235.80	69.10	45.90	
16042	62.00	16.70	412.60	120.90	412.60	120.90	32.70	395.90	116.00	395.90	116.00	36.80	378.60	111.00	378.60	111.00	41.00	361.60	106.00	361.60	106.00	44.70	
7570	67.00	19.40	452.80	132.70	343.30	100.60	33.60	435.00	127.50	336.80	98.70	37.80	416.80	122.20	330.20	96.80	41.90	399.30	117.00	324.00	95.00	45.40	
0.1	72.00	22.20	490.50	143.80	264.30	77.50	34.40	471.70	138.30	258.10	75.70	38.60	452.70	132.70	252.00	73.90	42.60	434.70	127.40	246.20	72.20	46.00	
12031	62.00	16.70	438.90	128.60	382.20	112.00	38.00	422.30	123.80	374.90	109.90	42.70	405.00	118.70	367.40	107.70	47.50	387.50	113.60	359.90	105.50	51.90	
5677	67.00	19.40	480.70	140.90	320.30	93.90	39.00	463.10	135.70	313.30	91.80	43.70	444.80	130.40	306.10	89.70	48.50	426.40	125.00	299.00	87.60	52.80	
0.06	72.00	22.20	520.30	152.50	255.60	74.90	39.90	501.80	147.10	249.10	73.00	44.70	482.50	141.40	242.40	71.00	49.50	463.20	135.80	235.60	69.10	53.70	
17000	62.00	16.70	473.20	138.70	464.50	136.10	38.80	454.60	133.20	454.60	133.20	43.50	435.10	127.50	435.10	127.50	48.30	415.60	121.80	415.60	121.80	52.60	
8022	67.00	19.40	519.60	152.30	381.90	111.90	39.90	499.70	146.50	374.40	109.70	44.70	479.10	140.40	366.80	107.50	49.40	458.50	134.40	359.30	105.30	53.60	
0.09	72.00	22.20	563.50	165.20	296.40	86.90	40.90	542.40	159.20	289.40	84.80	45.70	520.70	152.60	282.30	82.80	50.40	499.00	146.30	275.30	80.70	54.40	
18906	62.00	16.70	482.20	141.30	482.20	141.30	39.00	462.90	135.70	462.90	135.70	43.70	442.90	129.80	442.90	129.80	48.50	422.90	123.90	422.90	123.90	52.80	
8922	67.00	19.40	529.80	155.30	403.20	118.20	40.20	509.30	149.30	395.70	116.00	44.90	488.10	143.10	398.00	113.70	49.60	466.80	136.80	380.50	111.50	53.70	
0.1	72.00	22.20	574.80	168.50	310.40	91.00	41.20	553.00	162.10	303.30	88.90	46.00	530.60	155.50	296.10	86.50	50.70	508.30	149.00	288.90	84.70	54.60	
13125	62.00	16.70	488.50	143.20	421.30	123.50	44.70	470.30	137.90	413.20	121.10	50.00	451.40	132.30	404.90	118.70	55.40	432.00	126.60	396.50	116.20	60.30	
6194	67.00	19.40	534.80	156.70	353.60	103.60	45.90	515.50	151.10	345.90	101.40	51.30	495.40	145.20	337.90	99.00	56.60	474.80	139.20	329.90	96.70	61.40	
0.06	72.00	22.20	578.90	169.70	282.90	82.90	47.10	558.50	163.70	275.60	80.80	52.50	537.20	157.50	268.20	78.60	57.80	515.30	151.00	260.50	76.40	62.40	
18750	62.00	16.70	528.50	154.90	514.50	150.80	45.70	507.80	148.80	506.00	148.30	51.00	486.40	142.60	486.40	142.60	56.40	464.40	136.10	464.40	136.10	61.10	
8848	67.00	19.40	580.20	170.10	423.50	124.10	47.10	558.20	163.60	415.20	121.70	52.50	535.30	156.90	406.70	119.20	57.80	511.80	150.00	398.20	116.70	62.40	
0.09	72.00	22.20	629.30	184.50	329.30	96.50	48.40	605.90	177.60	321.50	94.20	53.90	581.60	170.50	313.60	91.90	59.00	556.50	163.10	305.40	89.50	63.40	
20625	62.00	16.70	537.50	157.60	537.50	157.60	46.00	516.30	151.30	516.30	151.30	51.30	494.30	144.90	494.30	144.90	56.60	471.70	138.30	471.70	138.30	61.30	
9733	67.00	19.40	590.60	173.10	444.40	130.30	47.40	567.90	166.40	436.20	127.80	52.80	544.40	159.60	427.60	125.30	58.00	520.20	152.50</				

SKM Packaged Air Conditioning Units PAC-V Series - R134a

GROSS CAPACITY RATINGS - 50 Hz

Model	AFR cfm (BPF)	EWB		Condenser Entering Air Temperature																			
				95°F (35°C)						105°F (41°C)						115°F (46°C)				125°F (52°C)			
				Total Capacity		Sensible Capacity		PI	Total Capacity		Sensible Capacity		PI	Total Capacity		Sensible Capacity		PI	Total Capacity		Sensible Capacity		PI
		°F	°C	MBh	kW	MBh	kW	kW	MBh	kW	MBh	kW	kW	MBh	kW	MBh	kW	kW	MBh	kW	MBh	kW	kW
53080-S	21437	62.00	16.70	797.90	233.90	717.90	210.40	70.10	766.10	224.50	703.80	206.30	78.10	733.20	214.90	689.40	202.10	86.00	699.60	205.10	674.90	197.80	92.80
	10116	67.00	19.40	876.20	256.80	600.10	175.90	72.30	842.20	246.90	586.50	171.90	80.40	807.10	236.60	572.60	167.80	88.20	771.00	226.00	558.50	163.70	94.70
	0.03	72.00	22.20	950.30	278.50	476.90	139.80	74.40	914.20	268.00	464.10	136.00	82.60	876.80	257.00	451.00	132.20	90.10	838.30	245.70	437.50	128.20	96.40
	28400	62.00	16.70	845.80	247.90	845.80	247.90	71.40	810.80	237.60	810.80	237.60	79.50	774.60	227.00	774.60	227.00	87.20	737.70	216.20	737.70	216.20	93.90
	13402	62.00	16.70	931.00	272.90	700.50	205.30	73.90	893.30	261.80	686.30	201.20	81.90	854.10	250.30	671.50	196.80	89.50	814.00	238.20	656.60	192.40	95.80
	0.04	72.00	22.20	1011.20	296.40	542.40	159.00	76.20	971.20	284.70	529.00	155.10	84.30	-	-	-	-	-	-	-	-	-	-
	33687	62.00	16.70	871.40	255.40	871.40	255.40	72.20	834.60	244.60	834.60	244.60	80.20	796.60	233.50	796.60	233.50	87.80	757.90	222.10	757.90	222.10	94.40
	15897	67.00	19.40	960.00	281.40	772.40	226.40	74.70	920.00	269.70	757.80	222.10	82.70	878.90	257.60	742.90	217.70	90.20	836.60	245.20	727.90	213.30	96.30
	0.05	72.00	22.20	-	-	-	-	-	-	-	-	-	-	-	-	-	-	-	-	-	-	-	-
	22312	62.00	16.70	863.00	253.00	761.70	223.30	72.50	829.80	243.20	746.80	218.90	81.10	795.10	233.10	731.50	214.40	89.90	759.80	222.70	716.10	209.90	98.00
10529	67.00	19.40	947.60	277.70	639.10	187.30	74.60	912.20	267.40	624.70	183.10	83.40	875.40	256.60	610.00	178.80	92.20	837.90	245.60	595.10	174.40	100.10	
0.03	72.00	22.20	1027.80	301.20	510.30	149.60	76.60	990.20	290.20	496.80	145.60	85.50	951.30	278.80	483.00	141.60	94.30	911.70	267.20	469.10	137.50	102.00	
30000	62.00	16.70	919.60	269.50	911.30	267.10	73.90	882.70	258.70	882.70	258.70	82.50	844.40	247.50	844.40	247.50	91.30	805.50	237.20	805.50	237.20	99.20	
14157	67.00	19.40	1012.20	296.70	750.50	220.00	76.20	972.70	285.10	735.60	215.60	85.10	931.80	273.10	720.20	211.10	93.80	890.00	260.80	704.40	206.50	101.50	
0.04	72.00	22.20	1099.70	322.30	583.50	171.00	78.50	1057.70	310.00	569.30	166.90	87.40	1014.50	297.40	554.80	162.60	96.10	-	-	-	-	-	
35062	62.00	16.70	945.90	277.20	945.90	277.20	74.50	907.20	265.90	907.20	265.90	83.20	867.20	254.20	867.20	254.20	92.00	826.60	242.30	826.60	242.30	99.80	
16546	67.00	19.40	1042.30	305.50	819.90	240.30	77.00	1000.60	293.30	804.40	235.80	85.80	957.50	280.60	788.70	231.20	94.50	913.80	267.80	772.80	226.50	102.10	
0.05	72.00	22.20	1133.30	332.20	628.40	184.20	79.40	-	-	-	-	-	-	-	-	-	-	-	-	-	-	-	
23625	62.00	16.70	917.00	268.80	807.90	236.80	79.40	881.20	258.30	791.90	232.10	88.80	844.00	247.40	775.50	227.30	98.30	806.60	236.40	759.10	222.50	106.90	
11149	67.00	19.40	1005.90	294.80	677.70	198.60	81.90	967.90	283.70	662.30	194.10	91.50	928.60	272.20	646.60	189.50	101.00	889.20	260.60	630.90	184.90	109.30	
0.03	72.00	22.20	1090.20	319.50	541.00	158.60	84.30	1049.90	307.70	526.50	154.30	94.10	1008.60	295.60	511.90	150.00	103.50	967.30	283.50	497.40	145.80	111.60	
31500	62.00	16.70	975.10	285.80	961.10	281.70	81.00	935.50	274.20	935.50	274.20	90.50	894.70	262.20	894.70	262.20	99.90	853.80	250.30	853.80	250.30	108.30	
14865	67.00	19.40	1072.20	314.20	791.70	232.10	83.80	1030.00	301.90	775.80	227.40	93.40	986.60	289.20	759.50	222.60	102.80	943.00	276.40	743.10	217.80	110.90	
0.04	72.00	22.20	1163.70	341.10	615.90	180.50	86.50	1119.00	328.00	600.70	176.10	96.20	1073.50	314.60	585.40	171.60	105.50	-	-	-	-	-	
37125	62.00	16.70	1004.40	294.40	1004.40	294.40	81.80	962.80	282.00	962.80	282.00	91.30	920.10	269.70	920.10	269.70	100.70	877.40	257.20	877.40	257.20	109.00	
17519	67.00	19.40	1105.60	324.10	868.90	254.70	84.80	1061.00	311.00	852.30	249.80	94.40	1015.20	297.60	835.60	244.90	103.70	969.70	284.20	819.10	240.10	111.70	
0.05	72.00	22.20	1200.90	352.00	665.70	195.10	87.60	-	-	-	-	-	-	-	-	-	-	-	-	-	-	-	
25156	62.00	16.70	950.00	280.20	851.20	249.50	83.30	918.10	269.10	834.20	244.50	93.10	879.00	257.60	817.10	239.50	103.00	839.80	246.10	800.10	234.50	111.70	
11871	67.00	19.40	1048.80	307.40	712.60	208.90	86.10	1008.60	295.60	696.40	204.10	96.10	967.30	283.50	679.90	199.30	105.90	926.20	271.50	663.80	194.60	114.40	
0.03	72.00	22.20	1136.50	333.10	567.20	166.30	88.80	1094.00	320.70	552.20	161.80	98.90	1050.70	300.00	536.90	157.40	108.60	1007.90	295.40	521.90	153.00	116.80	
33500	62.00	16.70	1015.10	297.50	1013.00	296.90	85.00	973.30	285.30	973.30	285.30	94.90	930.40	272.70	930.40	272.70	104.70	887.80	260.20	887.80	260.20	113.20	
15809	67.00	19.40	1116.10	327.10	832.90	244.10	88.10	1071.60	314.10	816.20	239.20	98.20	1026.00	300.70	799.00	234.20	107.80	980.80	287.50	781.90	229.20	116.00	
0.04	72.00	22.20	1211.20	355.00	646.00	189.30	91.10	1164.20	341.20	630.20	184.70	101.20	-	-	-	-	-	-	-	-	-	-	
39531	62.00	16.70	1045.10	306.30	1045.10	306.30	85.90	1001.30	293.50	1001.30	293.50	95.80	956.50	280.40	956.50	280.40	105.50	912.10	267.30	912.10	267.30	113.90	
18655	67.00	19.40	1150.20	337.10	915.10	268.20	89.20	1103.10	323.30	897.90	263.20	99.20	1055.30	309.30	880.40	258.00	108.70	1008.30	295.50	863.50	253.10	116.80	
0.05	72.00	22.20	1249.30	366.20	699.20	204.90	92.40	-	-	-	-	-	-	-	-	-	-	-	-	-	-	-	
25812	62.00	16.70	1031.00	302.20	895.90	262.60	90.60	991.40	290.60	878.00	257.40	101.20	950.20	278.50	859.70	252.00	111.90	908.00	266.10	841.10	246.50	121.60	
12181	67.00	19.40	1130.90	331.50	753.50	220.80	93.20	1088.70	319.10	736.30	215.80	104.00	1044.90	306.30	718.50	210.60	114.60	999.80	293.00	700.60	205.30	124.00	
0.03	72.00	22.20	1225.80	359.30	603.80	177.00	95.80	1181.00	346.20	587.50	172.20	106.60	1134.50	332.50	570.80	167.30	117.10	1086.50	318.50	553.80	162.30	126.10	
33500	62.00	16.70	1092.30	320.20	1046.70	306.80	92.20	1048.80	307.40	1028.00	301.30	102.90	1003.60	294.20	1003.60	294.20	113.50	957.40	280.90	957.40	280.90	126.90	
15809	67.00	19.40	1200.90	352.00	865.80	253.80	95.10	1154.30	338.30	847.90	248.50	105.90	1106.00	324.20	829.70	243.20	116.30	1056.20	309.60	811.00	237.70	125.40	
0.04	72.00	22.20	1303.60	382.10	678.20	198.80	97.90	1254.00	367.60	661.10	193.80	108.70	1202.70	352.50	643.40	188.60	119.00	1149.60	337.00	625.70	183.40	127.60	
40562	62.00	16.70	1132.30	331.90	1132.30	331.90	93.30	1086.00	318.30	1086.00	318.30	103.90	1038.20	304.30	1038.20	304.30	114.40	989.30	290.00	989.30	290.00	123.70	
19141	67.00	19.40	1246.60	365.40	963.90	282.50	96.30	1197.00	350.80	945.20	277.00	107.10	1145.30	335.70	926.20	271.50	117.40	1092.10	320.10	906.70	265.80	126.20	
0.05	72.00	22.20	1354.60	397.00																			

SKM Packaged Air Conditioning Units PAC-V Series - R134a

GROSS CAPACITY RATINGS - 60 Hz

Model	AFR cfm /Is (BPF)	EWB		Condenser Entering Air Temperature																							
				95°F (35°C)						105°F (41°C)						115°F (46°C)						125°F (52°C)					
				Total Capacity		Sensible Capacity		PI	Total Capacity		Sensible Capacity		PI	Total Capacity		Sensible Capacity		PI	Total Capacity		Sensible Capacity		PI				
				MBh	kW	MBh	kW		kW	MBh	kW	MBh		kW	kW	MBh	kW		MBh	kW	kW	MBh		kW	MBh	kW	kW
61009-S	2333	62.00	16.70	91.80	26.90	79.10	23.20	7.90	88.50	25.90	77.60	22.70	9.00	84.90	24.90	76.00	22.30	10.10	81.30	23.80	74.40	21.80	11.10				
	1101	67.00	19.40	100.70	29.50	66.50	19.50	8.10	97.10	28.50	65.10	19.10	9.20	93.40	27.40	63.60	18.60	10.30	89.60	26.30	62.10	18.20	11.30				
	0.03	72.00	22.20	109.10	32.00	53.40	15.60	8.20	105.30	30.90	52.00	15.20	9.30	101.40	29.70	50.60	14.80	10.40	97.50	28.60	49.20	14.40	11.40				
	3000	62.00	16.70	97.90	28.70	91.60	26.90	8.00	94.20	27.60	90.00	26.40	9.10	90.30	26.50	88.40	25.90	10.20	86.40	25.30	86.40	25.30	11.20				
	1416	67.00	19.40	107.60	31.50	76.00	22.30	8.20	103.60	30.40	74.50	21.80	9.30	99.50	29.20	73.00	21.40	10.40	95.40	28.00	71.40	20.90	11.40				
	0.04	72.00	22.20	116.80	34.20	59.80	17.50	8.30	112.60	33.00	58.40	17.10	9.40	108.30	31.70	56.90	16.70	10.50	104.00	30.50	55.40	16.20	11.50				
	3667	62.00	16.70	102.20	30.00	102.20	30.00	8.10	98.30	28.80	98.30	28.80	9.20	94.10	27.60	94.10	27.60	10.30	89.90	26.40	89.90	26.40	11.30				
	1730	67.00	19.40	112.50	33.00	84.80	24.80	8.30	108.30	31.70	83.20	24.40	9.40	103.90	30.50	81.50	23.90	10.50	99.50	29.20	79.90	23.40	11.40				
	0.05	72.00	22.20	122.30	35.80	65.50	19.20	8.40	117.80	34.50	64.00	18.80	9.50	113.10	33.20	62.50	18.30	10.60	-	-	-	-	-				
	3208	62.00	16.70	120.40	35.30	106.10	31.10	9.40	115.90	34.00	104.10	30.50	10.50	111.10	32.60	102.00	29.90	11.80	106.30	31.10	99.90	29.30	13.00				
1514	67.00	19.40	132.00	38.70	88.90	26.10	9.60	127.20	37.00	87.00	25.50	10.80	122.10	35.80	84.90	24.90	12.00	117.10	34.30	83.00	24.30	13.20					
0.03	72.00	22.20	143.00	41.90	70.90	20.80	9.80	137.90	40.40	69.10	20.20	11.00	132.60	38.90	67.20	19.70	12.30	127.40	37.30	65.40	19.20	13.40					
4000	62.00	16.70	127.10	37.30	120.90	35.40	9.50	122.20	35.80	118.80	34.80	10.70	117.00	34.30	116.60	34.20	11.90	111.80	32.80	111.80	32.80	13.10					
1888	67.00	19.40	139.60	40.90	100.00	29.30	9.70	134.30	39.40	98.00	28.70	10.90	128.80	37.80	96.00	28.10	12.20	123.40	36.20	93.90	27.50	13.30					
0.04	72.00	22.20	151.40	44.40	78.30	23.00	10.00	145.80	42.70	76.40	22.40	11.20	140.00	41.00	74.50	21.80	12.50	134.40	39.40	72.60	21.30	13.60					
5042	62.00	16.70	133.40	39.10	133.40	39.10	9.60	128.00	37.50	128.00	37.50	10.80	122.40	35.90	122.40	35.90	12.10	116.90	34.30	116.90	34.30	13.20					
2379	67.00	19.40	146.70	43.00	113.50	33.30	9.90	141.00	41.30	111.40	32.70	11.10	135.00	39.60	109.20	32.00	12.30	129.20	37.90	107.10	31.40	13.50					
0.05	72.00	22.20	159.20	46.70	87.20	25.60	10.10	153.20	44.90	85.20	25.00	11.40	-	-	-	-	-	-	-	-	-	-					
4375	62.00	16.70	162.90	47.80	144.10	42.20	13.10	156.90	46.00	141.40	41.50	14.60	150.50	44.10	138.70	40.60	16.20	144.00	42.20	135.90	39.80	17.80					
2065	67.00	19.40	178.80	52.40	120.70	35.40	13.50	172.30	50.50	118.10	34.60	15.00	165.60	48.50	115.50	33.80	16.60	158.80	46.50	112.80	33.10	18.10					
0.03	72.00	22.20	193.80	56.80	96.20	28.20	13.80	187.00	54.80	93.80	27.50	15.40	179.90	52.70	91.30	26.80	17.00	172.80	50.60	88.80	26.00	18.50					
6000	62.00	16.70	175.70	51.50	174.10	51.00	13.40	168.80	49.50	168.80	49.50	14.90	161.70	47.40	161.70	47.40	16.50	154.50	45.30	154.50	45.30	18.00					
2831	67.00	19.40	193.30	56.70	143.30	42.00	13.80	186.00	54.50	140.50	41.20	15.40	178.40	52.30	137.60	40.30	17.00	170.70	50.00	134.80	39.50	18.40					
0.04	72.00	22.20	209.90	61.50	111.20	32.60	14.20	202.20	59.30	108.60	31.80	15.80	194.20	56.90	106.00	31.10	17.40	-	-	-	-	-					
6875	62.00	16.70	180.50	52.90	180.50	52.90	13.50	173.30	50.80	173.30	50.80	15.00	165.90	48.60	165.90	48.60	16.60	158.40	46.40	158.40	46.40	18.10					
3244	67.00	19.40	198.80	58.30	154.30	45.20	13.90	191.10	56.00	151.50	44.40	15.50	183.10	53.70	148.60	43.60	17.10	175.10	51.30	145.70	42.70	18.50					
0.05	72.00	22.20	216.00	63.30	118.50	34.70	14.30	-	-	-	-	-	-	-	-	-	-	-	-	-	-	-					
4375	62.00	16.70	177.20	51.90	150.50	44.10	16.30	170.60	50.00	147.60	43.30	18.50	163.70	48.00	144.50	42.40	20.70	156.80	46.00	141.40	41.50	22.70					
2065	67.00	19.40	194.00	56.90	126.90	37.20	16.70	187.10	54.80	124.10	36.40	18.90	179.90	52.70	121.20	35.50	21.10	172.70	50.60	118.30	34.70	23.00					
0.03	72.00	22.20	210.00	61.60	102.10	29.90	17.00	202.70	59.40	99.40	29.10	19.20	195.10	57.20	96.70	28.30	21.40	187.70	55.00	94.00	27.60	23.30					
6000	62.00	16.70	192.00	56.30	181.00	53.00	16.60	184.50	54.10	177.80	52.10	18.80	176.80	51.80	174.60	51.20	21.00	169.10	49.60	169.10	49.60	23.00					
2831	67.00	19.40	210.80	61.80	149.90	43.90	17.00	202.90	59.50	146.90	43.00	19.20	194.70	57.10	143.80	42.10	21.40	186.70	54.70	140.80	41.30	23.30					
0.04	72.00	22.20	228.60	67.00	117.60	34.50	17.40	220.20	64.50	114.70	33.60	19.60	211.70	62.00	111.80	32.80	21.70	203.30	59.60	109.00	32.00	23.50					
6875	62.00	16.70	197.60	57.90	196.10	57.50	16.80	189.80	55.60	189.80	55.60	18.90	181.70	53.30	181.70	53.30	21.10	173.70	50.90	173.70	50.90	23.10					
3244	67.00	19.40	217.20	63.70	161.20	47.30	17.10	208.90	61.20	158.10	46.30	19.30	200.40	58.70	154.90	45.40	21.50	192.00	56.30	151.80	44.50	23.30					
0.05	72.00	22.20	235.70	69.10	125.00	36.60	17.50	226.90	66.50	122.10	35.80	19.70	218.00	63.90	119.20	34.90	21.80	209.30	61.30	116.30	34.10	23.50					
4769	62.00	16.70	187.70	55.00	161.70	47.40	17.30	180.70	53.00	158.50	46.40	19.40	173.30	50.80	155.20	45.50	21.40	165.80	48.60	151.90	44.50	23.30					
2250	67.00	19.40	205.50	60.20	135.90	39.80	17.90	198.00	58.00	132.80	38.90	20.00	190.20	55.80	129.70	38.00	22.00	182.40	53.50	126.60	37.10	23.90					
0.03	72.00	22.20	222.30	65.20	108.90	31.90	18.40	214.40	62.80	106.00	31.10	20.50	206.30	60.50	103.10	30.20	22.50	198.10	58.10	100.20	29.40	24.40					
6600	62.00	16.70	203.20	59.60	195.60	57.30	17.80	195.20	57.20	192.20	56.30	19.90	186.90	54.80	186.90	54.80	21.90	178.50	52.30	178.50	52.30	23.80					
3115	67.00	19.40	223.10	65.40	161.40	47.30	18.40	214.50	62.90	158.20	46.40	20.50	205.80	60.30	154.90	45.40	22.50	197.00	57.70	151.60	44.40	24.30					
0.04	72.00	22.20	241.80	70.90	126.00	36.90	19.00	232.80	68.20	122.90	36.00	21.10	223.60	65.50	119.80	35.10	23.10	214.50	62.90	116.80	34.20	24.80					
7494	62.00	16.70	208.60	61.10	208.60	61.10	18.00	200.20	58.70	200.20	58.70	20.00	191.50	56.10	191.50	56.10	22.10	182.90	53.60	182.90	53.60	23.90					
3536	67.00	19.40	229.20	67.20	172.90	50.70	18.60	220.20	64.50	169.50	49.70	20.70	211.10	61.90	166.20	48.70	22.70	201.90	59.20	162.80	47.70	24.50					
0.05	72.00	22.20	248.60	72.90	133.50	39.10	19.20	239.20	70.10	130.40	38.20	21.30	229.60	67.30	127.30	37.30	23.30	-	-	-	-	-					
4769	62.00	16.70	195.60	57.30	165.20	48.40	18.30	188.20	55.10	161.80	47.40	20.70	180.40	52.90	158.40	46.40	23.00	172.80	50.70	155.00	45.40	25.10					
2250	67.00	19.40	213.90	62.70	139.30	40.80	18.80	206.00	60.40	136.10	39.90	21.20	197.90	58.00	132.80	38.90	23.50	190.00	55.70	129.60	38.00	25.50					
0.03	72.00	22.20	231.10	67.70	112.10	32.90	19.30	222.80	65.30	109.10	32.00	21.70	214.40	62.80	106.00	31.10	23.90	206.30	60.50	103.10	30.20	25.80					
6600	62.00	16.70	212.30	62.20	199.40	58.50	18.80	203.80	59.70	195.80	57.40	21.10	195.00	57.20	192.20	56.30	23.40	186.60	54.70	186.60	54.70	25.40					
3115	67.00	19.40	232.60	68.20	165.10	48.40	19.30	223.60	65.50	161.60	47.40	21.20	214.50	62.90	158.20	46.40	24.00	205.80	60.30	154.90	45.40	25.80					

SKM Packaged Air Conditioning Units

PAC-V Series - R134a

GROSS CAPACITY RATINGS - 60 Hz

Model	AFR cfm l/s (BPF)	EWB		Condenser Entering Air Temperature																							
				95°F (35°C)						105°F (41°C)						115°F (46°C)						125°F (52°C)					
				Total Capacity		Sensible Capacity		PI	Total Capacity		Sensible Capacity		PI	Total Capacity		Sensible Capacity		PI	Total Capacity		Sensible Capacity		PI				
				MBh	kW	MBh	kW	kW	MBh	kW	MBh	kW	kW	MBh	kW	MBh	kW	kW	MBh	kW	MBh	kW	kW				
62036-S	8750	62.00	16.70	342.00	100.30	295.50	86.60	31.00	329.10	96.50	289.70	84.90	34.70	315.60	92.50	283.70	83.20	38.30	302.00	88.50	277.80	81.40	41.70				
	4129	67.00	19.40	374.40	109.70	248.30	72.80	32.00	360.70	105.70	242.70	71.10	35.70	346.50	101.60	237.00	69.50	39.30	332.30	97.40	231.40	67.80	42.60				
	0.03	72.00	22.20	405.20	118.80	198.80	58.30	32.90	390.70	114.50	193.50	56.70	36.60	375.80	110.20	188.30	55.20	40.20	361.00	105.80	183.00	53.60	43.40				
	11500	62.00	16.70	366.00	107.30	346.90	101.70	31.70	351.50	103.00	340.80	99.90	35.40	336.60	98.70	334.50	98.00	39.00	321.70	94.30	321.70	94.30	42.30				
	5427	67.00	19.40	401.60	117.70	286.90	84.10	32.80	386.20	113.20	281.10	82.40	36.50	370.50	108.60	275.20	80.70	40.10	354.80	104.00	269.30	98.30	43.20				
	0.04	72.00	22.20	435.20	127.60	224.80	65.90	33.80	419.00	122.80	219.20	64.20	37.50	402.50	118.00	213.60	62.60	41.10	386.20	113.20	208.10	61.00	44.10				
	13750	62.00	16.70	379.80	111.30	379.80	111.30	32.10	364.50	106.80	364.50	106.80	35.80	348.70	102.20	348.70	102.20	39.40	332.90	97.60	332.90	97.60	42.60				
	6489	67.00	19.40	417.30	122.30	316.00	92.60	33.30	401.00	117.50	309.90	90.80	36.90	384.30	112.60	303.80	89.00	40.50	367.60	107.70	297.70	87.30	43.60				
	0.05	72.00	22.20	452.70	132.70	243.80	71.40	34.30	435.40	127.60	238.10	69.80	38.00	418.00	122.50	232.40	68.10	41.50	-	-	-	-	-				
	8750	62.00	16.70	359.40	105.30	303.40	88.90	35.30	345.80	101.40	297.20	87.10	39.00	331.70	97.20	290.90	85.30	43.50	317.50	93.10	284.50	83.40	47.20				
62037-S	4129	67.00	19.40	392.70	115.10	255.80	75.00	36.50	378.40	110.90	249.90	73.20	40.60	363.60	106.60	243.90	71.50	44.70	348.70	102.20	237.90	69.70	48.30				
	0.03	72.00	22.20	424.40	124.40	205.80	60.30	37.50	409.30	120.00	200.30	58.70	41.70	393.80	115.40	194.60	57.00	45.80	378.30	110.90	189.10	55.40	49.30				
	11500	62.00	16.70	385.30	112.90	355.20	104.10	36.20	370.10	108.50	348.60	102.20	40.30	354.50	103.90	342.00	100.20	44.40	338.80	99.30	335.40	98.30	48.00				
	5427	67.00	19.40	422.00	123.70	294.80	86.40	37.50	405.90	119.00	288.60	84.60	41.60	389.50	114.20	282.30	82.80	45.60	373.10	109.40	276.20	80.90	49.10				
	0.04	72.00	22.20	456.80	133.90	232.20	68.10	38.60	439.80	128.90	226.40	66.30	42.80	422.60	123.90	220.40	64.60	46.80	405.60	118.90	214.60	62.90	50.10				
	13750	62.00	16.70	400.30	117.30	394.40	115.60	36.70	384.20	112.60	384.20	112.60	40.80	367.60	107.80	367.60	107.80	44.90	351.10	102.90	351.10	102.90	48.40				
	6489	67.00	19.40	439.10	128.70	324.20	95.00	38.00	422.00	123.70	317.80	93.10	42.20	404.50	118.60	311.20	91.20	46.20	387.20	113.50	304.90	89.40	49.50				
	0.05	72.00	22.20	475.70	139.40	251.50	73.70	39.30	457.60	134.10	245.40	71.90	43.40	439.40	128.80	239.40	70.20	47.30	421.40	123.50	233.60	68.50	50.50				
	10208	62.00	16.70	431.30	126.40	359.50	105.40	39.00	415.00	121.60	352.00	103.20	43.90	397.90	116.60	344.20	100.90	48.90	381.20	111.70	336.80	98.70	53.40				
	4817	67.00	19.40	471.00	138.10	303.80	89.00	40.10	453.70	133.00	296.60	86.90	45.10	435.90	127.80	289.30	84.80	50.00	418.70	122.70	282.30	82.70	54.40				
62046-S	0.03	72.00	22.20	508.70	149.10	245.20	71.90	41.10	490.50	143.80	238.40	69.90	46.20	472.00	138.30	231.60	67.90	51.10	454.40	133.20	225.30	66.00	55.20				
	14580	62.00	16.70	472.00	138.40	441.10	129.30	40.10	453.10	132.80	433.00	126.90	45.10	433.70	127.10	424.80	124.50	50.00	415.00	121.60	415.00	121.60	54.30				
	6880	67.00	19.40	516.90	151.50	365.20	107.00	41.40	496.90	145.60	357.60	104.80	46.30	476.60	139.70	349.90	102.60	51.20	457.40	134.10	342.70	100.40	55.30				
	0.04	72.00	22.20	559.10	163.90	286.50	84.00	42.50	538.10	157.70	279.30	81.90	47.50	517.00	151.50	272.10	79.80	52.30	497.40	145.80	265.50	77.80	56.20				
	16042	62.00	16.70	481.60	141.20	466.30	136.70	40.40	462.10	135.40	458.10	134.30	45.30	442.10	129.60	442.10	129.60	50.20	423.00	124.00	423.00	124.00	54.50				
	7570	67.00	19.40	527.70	154.70	384.10	112.60	41.60	507.00	148.60	376.30	110.30	46.60	486.20	142.50	368.40	108.00	51.50	466.50	136.70	361.10	105.80	55.50				
	0.05	72.00	22.20	571.10	167.40	298.80	87.60	42.80	549.30	161.00	291.50	85.40	47.90	527.70	154.70	284.30	83.30	52.60	507.60	148.80	277.70	81.40	56.40				
	12031	62.00	16.70	519.60	152.30	435.60	127.70	47.00	499.90	146.50	426.40	125.00	52.60	479.40	140.50	417.10	122.20	58.30	459.00	134.50	407.90	119.60	63.40				
	5677	67.00	19.40	568.10	166.50	368.20	107.90	48.40	547.30	160.40	359.50	105.40	54.10	525.80	154.10	350.60	102.80	59.70	504.70	147.90	342.10	100.30	64.70				
	62055-S	0.03	72.00	22.20	614.10	180.00	297.40	87.20	49.70	592.10	173.60	289.20	84.80	55.40	569.70	167.00	280.80	82.30	61.00	547.90	160.60	272.90	80.00	65.80			
17000		62.00	16.70	561.60	164.60	532.80	156.20	48.20	539.30	158.10	523.20	153.40	53.80	516.30	151.30	513.50	150.50	59.40	493.80	144.70	493.80	144.70	64.40				
8022		67.00	19.40	615.60	180.40	440.70	129.20	49.70	591.90	173.50	431.60	126.50	55.40	567.80	166.40	422.50	123.80	61.00	544.40	159.60	413.70	121.20	65.70				
0.04		72.00	22.20	666.50	195.30	345.20	101.20	51.20	641.50	188.00	336.60	98.70	56.90	616.40	180.70	328.00	96.10	62.40	592.20	173.60	319.80	93.70	66.90				
18906		62.00	16.70	573.00	168.00	568.40	166.60	48.50	549.90	161.20	549.90	161.20	54.20	526.30	154.30	526.30	154.30	59.70	503.20	147.50	503.20	147.50	64.60				
8922		67.00	19.40	628.50	184.20	467.10	136.90	50.10	604.00	177.00	457.90	134.20	55.80	579.20	169.80	448.60	131.50	61.30	555.20	162.70	439.50	128.80	66.00				
0.05		72.00	22.20	680.70	199.50	362.10	106.10	51.60	654.90	192.00	353.50	103.60	57.30	629.00	184.40	344.80	101.10	62.70	604.20	177.10	336.60	92.70	67.10				
13125		62.00	16.70	580.60	170.20	481.60	141.20	55.30	558.80	163.80	471.40	138.20	61.70	536.10	157.10	461.00	135.10	68.10	513.50	150.50	450.70	132.10	73.80				
6194		67.00	19.40	634.50	186.00	407.90	119.60	57.00	611.40	179.20	398.20	116.70	63.50	587.70	172.20	388.30	113.80	69.80	564.00	165.30	378.60	111.00	75.20				
62050-S		0.03	72.00	22.20	685.60	200.90	330.40	96.80	58.60	661.30	193.80	321.20	94.20	65.10	636.50	186.60	311.90	91.40	71.40	611.90	174.90	302.90	88.80	76.60			
	18750	62.00	16.70	629.90	184.60	591.90	173.50	56.90	605.00	177.30	581.20	170.40	63.30	579.50	169.80	570.40	167.20	69.50	554.10	162.40	554.10	162.40	75.00				
	8848	67.00	19.40	690.00	202.30	490.20	143.70	58.80	663.70	194.50	480.00	140.70	65.20	636.90	186.70	469.80	137.70	71.40	610.40	178.90	459.80	134.80	76.50				
	0.04	72.00	22.20	746.90	218.90	384.80	112.80	60.60	719.10	210.80	375.20	110.00	67.10	691.10	202.50	365.50	107.10	73.10	663.60	194.50	356.10	104.40	77.90				
	20625	62.00	16.70	641.50	188.00	627.00	183.80	57.20	615.90	180.50	615.90	180.50	63.60	589.70	172.80	589.70	172.80	69.50	563.70	165.20	563.70	165.20	75.20				
	973																										

SKM Packaged Air Conditioning Units PAC-V Series - R134a

GROSS CAPACITY RATINGS - 60 Hz

Model	AFR cfm /s (BPF)	EWB		Condenser Entering Air Temperature																							
				95°F (35°C)						105°F (41°C)						115°F (46°C)						125°F (52°C)					
				Total Capacity		Sensible Capacity		PI	Total Capacity		Sensible Capacity		PI	Total Capacity		Sensible Capacity		PI	Total Capacity		Sensible Capacity		PI				
				MBh	kW	MBh	kW	kW	MBh	kW	MBh	kW	kW	MBh	kW	MBh	kW	kW	MBh	kW	MBh	kW	kW				
63095-S	21437	62.00	16.70	928.90	272.30	783.00	229.50	86.70	892.00	261.40	765.90	224.50	96.40	854.30	250.40	748.70	219.40	105.60	817.00	239.50	731.90	214.50	113.50				
	10116	67.00	19.40	1017.00	298.10	862.10	259.10	89.70	977.90	286.60	845.70	250.30	99.40	938.40	275.00	829.40	248.50	108.40	899.60	263.70	813.60	237.80	115.80				
	0.01	72.00	22.20	1100.10	322.40	934.70	276.70	92.60	1059.00	310.40	879.20	252.20	102.20	1017.70	298.30	903.80	267.70	111.00	977.50	286.50	849.10	243.40	117.80				
	28400	62.00	16.70	985.90	289.00	922.70	270.50	88.70	945.30	277.10	905.10	265.30	98.30	904.10	265.00	887.40	260.10	107.30	863.70	253.20	863.70	253.20	114.80				
	13402	67.00	19.40	1081.50	317.00	965.60	284.40	91.90	1038.50	304.40	948.80	279.50	101.50	995.20	291.70	932.00	274.50	110.30	952.70	279.20	876.00	250.80	117.20				
	0.02	72.00	22.20	1171.40	343.30	1023.30	296.50	95.10	1126.20	330.10	1056.50	291.90	104.50	1081.00	316.80	970.80	287.30	112.90	992.00	291.00	887.00	261.00	122.00				
	33687	62.00	16.70	1016.30	297.90	1016.30	297.90	89.70	973.70	285.40	973.70	285.40	99.20	930.70	272.80	930.70	272.80	108.20	888.60	260.40	888.60	260.40	115.50				
	15897	67.00	19.40	1116.10	327.10	841.10	246.50	93.10	1070.60	313.80	824.00	241.50	102.60	1025.00	300.40	806.80	236.50	111.20	980.70	287.40	790.20	231.60	117.90				
	0.02	72.00	22.20	1209.60	354.50	650.40	190.60	96.40	-	-	-	-	-	-	-	-	-	-	-	-	-	-	-				
	22312	62.00	16.70	1002.60	293.90	831.80	243.80	90.00	964.30	282.60	813.80	238.50	100.50	924.50	271.70	795.30	233.10	111.00	884.50	259.20	777.10	227.80	120.50				
63100-S	10529	67.00	19.40	1098.00	321.80	705.90	206.90	92.80	1057.40	309.90	688.70	201.80	103.40	1015.50	291.00	671.10	196.70	113.90	973.60	285.40	653.80	197.60	123.10				
	0.01	72.00	22.20	1188.40	348.30	572.80	167.90	95.50	1145.60	335.80	556.70	163.20	106.20	1101.70	322.90	540.20	158.30	116.50	1058.00	310.10	523.90	153.60	125.40				
	30000	62.00	16.70	1069.90	313.60	986.90	289.30	92.00	1027.30	301.10	968.20	283.80	102.50	983.50	288.30	949.30	278.30	112.90	939.70	275.40	930.50	272.70	122.10				
	14157	67.00	19.40	1174.40	344.20	821.30	240.70	95.10	1129.10	331.00	803.30	235.40	105.70	1082.90	317.40	785.30	230.20	116.00	1036.90	303.90	767.60	225.00	124.90				
	0.02	72.00	22.20	1272.90	373.10	648.50	190.10	98.00	1225.20	359.10	631.80	185.20	108.70	1176.70	344.90	614.90	180.20	118.80	1128.80	330.80	598.40	175.40	127.30				
	35062	62.00	16.70	1101.20	322.80	1085.10	318.00	92.90	1056.60	309.70	1056.60	309.70	103.40	1010.80	296.30	1010.80	296.30	113.70	965.20	282.90	965.20	282.90	122.90				
	16546	67.00	19.40	1210.00	354.60	893.70	261.90	96.20	1162.60	340.70	875.80	256.70	106.70	1114.00	326.50	857.50	251.30	116.90	1065.60	312.30	839.30	246.00	125.60				
	0.02	72.00	22.20	1312.40	384.70	695.30	203.80	99.20	1262.30	370.00	678.10	198.70	109.80	-	-	-	-	-	-	-	-	-	-				
	23625	62.00	16.70	1061.50	311.00	1180.70	258.10	99.40	1020.40	299.10	1180.70	258.10	110.90	978.00	286.60	841.70	246.70	122.20	935.40	274.20	822.30	241.00	132.30				
	63105-S	11149	67.00	19.40	1161.90	340.50	747.10	219.00	102.70	1118.30	327.80	728.60	213.60	114.30	1073.70	314.70	710.00	208.10	125.50	1029.20	301.70	691.60	202.70	135.30			
0.01		72.00	22.20	1257.00	368.40	606.00	177.60	105.80	1211.10	355.00	588.80	172.60	117.50	1164.40	341.30	571.20	167.40	128.50	1118.10	327.70	553.90	162.40	137.90				
31500		62.00	16.70	1130.40	331.30	1039.50	304.70	101.70	1084.90	318.00	1019.50	298.80	113.10	1038.30	304.30	999.40	292.90	124.30	991.80	290.70	979.40	287.10	134.10				
14865		67.00	19.40	1240.00	363.40	865.20	253.60	105.30	1191.80	349.30	846.00	248.00	116.80	1142.70	334.90	826.90	242.40	127.80	1093.90	320.60	808.00	236.80	137.20				
0.02		72.00	22.20	1343.40	393.80	683.50	200.30	108.60	1292.60	378.90	665.60	195.10	120.20	1241.20	363.80	647.70	189.80	131.00	1190.60	349.00	620.20	184.70	139.90				
37125		62.00	16.70	1165.10	341.50	1148.50	336.60	102.80	1117.40	327.50	1117.40	327.50	114.30	1068.60	313.20	1068.60	313.20	125.30	1020.10	299.00	1020.10	299.00	135.00				
17519		67.00	19.40	1279.50	375.00	945.70	277.20	106.50	1228.90	360.20	926.60	271.60	118.10	1177.20	345.00	907.10	265.90	128.90	1125.90	330.00	887.80	260.20	138.10				
0.02		72.00	22.20	1387.30	406.60	735.40	215.50	110.10	1333.80	391.00	717.00	210.20	121.60	-	-	-	-	-	-	-	-	-	-				
25156		62.00	16.70	1105.10	323.90	926.00	271.40	104.80	1061.70	311.20	905.70	265.50	116.70	1017.10	298.10	885.20	259.50	128.40	972.40	285.00	865.00	253.50	138.70				
63110-S		11871	67.00	19.40	1209.90	354.60	783.90	229.80	108.30	1163.90	341.20	764.60	224.10	120.40	1117.00	327.40	745.10	218.40	132.00	1070.30	313.70	726.00	212.80	141.90			
	0.01	72.00	22.20	1309.00	383.70	634.20	185.90	111.70	1260.70	369.50	616.00	180.60	123.80	1211.60	355.10	597.50	175.10	135.20	1163.10	340.90	579.80	169.90	144.60				
	33500	62.00	16.70	1175.10	344.40	1093.60	320.50	107.20	1127.20	330.40	1072.70	314.40	119.10	1078.30	316.00	1051.70	308.30	130.60	1029.60	301.80	1029.60	301.80	140.60				
	15809	67.00	19.40	1289.20	377.90	908.40	266.30	111.10	1238.50	363.00	888.40	260.40	123.00	1186.90	347.90	868.40	254.50	134.30	1135.70	332.90	848.90	248.80	143.80				
	0.02	72.00	22.20	1396.90	409.40	715.70	209.80	114.70	1343.40	393.80	697.00	204.30	126.70	1289.50	378.00	678.30	198.80	137.70	1262.90	370.20	669.10	196.10	142.50				
	39531	62.00	16.70	1210.70	354.90	1210.40	354.80	108.40	1160.40	340.10	1160.40	340.10	120.30	1109.30	325.10	1109.30	325.10	131.70	1058.60	310.30	1058.60	310.30	141.50				
	18655	67.00	19.40	1329.80	389.80	994.60	291.50	112.40	1276.40	374.10	974.50	285.60	124.40	1222.00	358.20	954.00	279.60	135.50	1168.50	342.90	933.50	273.70	144.80				
	0.02	72.00	22.20	1441.90	422.60	770.90	226.00	116.30	1385.70	406.20	751.90	220.40	128.10	-	-	-	-	-	-	-	-	-	-				
	25812	62.00	16.70	1198.60	351.30	980.70	287.50	112.20	1152.60	337.80	958.90	281.00	125.00	1105.10	323.90	936.60	274.50	137.70	1057.70	310.00	914.70	268.10	148.70				
	64120-S	12181	67.00	19.40	1311.10	384.30	834.20	244.50	115.70	1262.40	370.00	813.20	238.40	128.70	1212.50	355.40	792.20	232.20	141.20	1163.10	340.90	771.60	226.10	151.70			
0.01		72.00	22.20	1417.50	415.50	679.10	199.00	119.20	1366.30	400.50	659.50	193.30	132.20	1314.20	385.20	639.80	187.50	144.40	1262.80	370.10	620.50	181.90	154.40				
33500		62.00	16.70	1271.50	372.70	1136.80	333.20	114.50	1220.90	357.80	1114.30	326.60	127.20	1169.10	342.70	1091.50	319.90	139.80	1117.70	327.60	1069.20	313.40	150.50				
15809		67.00	19.40	1393.40	408.40	950.50	278.60	118.40	1339.80	392.70	929.00	272.30	131.30	1285.30	376.70	907.20	265.90	143.50	1231.70	361.00	886.20	259.70	153.60				
0.02		72.00	22.20	1508.40	442.10	755.40	221.40	122.10	1451.90	425.60	735.40	215.50	135.00	1394.90	408.90	715.20	209.60	146.90	1339.30	392.50	695.80	203.90	156.40				
40562		62.00	16.70	1318.90	386.60	1274.60	373.60	116.00	1265.30	37																	

SKM Packaged Air Conditioning Units PAC-V Series - R134a

FAN PERFORMANCE - 50Hz

PACV	Air Flow Rate		Internal Static Pressure		External Static Pressure in.wg (Pa)																			
					0.2 (50)		0.4 (100)		0.6 (149)		0.8 (199)		1.0 (249)		1.2 (299)		1.4 (349)		1.6 (399)		1.8 (448)		2.0 (498)	
	cfm	l/s	in.wg	Pa	RPM	kW	RPM	kW	RPM	kW	RPM	kW	RPM	kW	RPM	kW	RPM	kW	RPM	kW	RPM	kW	RPM	kW
51008-S	2333	1101	0.47	117.66	649	0.35	739	0.43	824	0.51	905	0.6	981	0.69	1053	0.79	1120	0.89	1185	0.99	1246	1.1	1304	1.2
	3000	1416	0.81	202.04	799	0.7	870	0.79	939	0.89	1007	1	1072	1.1	1135	1.22	1196	1.33	1254	1.45	1311	1.57	1366	1.7
	3667	1730	1.25	310.42	958	1.23	1016	1.35	1074	1.46	1131	1.58	1186	1.71	1241	1.84	1295	1.97	1354	2.11	1398	2.24	1448	2.38
51010-S	3208	1514	0.47	117.67	546	0.46	619	0.56	689	0.67	755	0.79	818	0.92	877	1.04	933	1.18	986	1.32	1037	1.46	1085	1.6
	4000	1888	0.76	188.93	655	0.83	715	0.96	773	1.09	829	1.22	884	1.36	936	1.51	987	1.67	1036	1.82	1083	1.98	1129	2.15
	5042	2379	1.25	310.4	807	1.61	855	1.76	902	1.91	949	2.07	994	2.24	1039	2.41	1082	2.59	1125	2.77	1167	2.96	-	-
51014-S	4375	2065	0.43	107.06	659	0.65	758	0.81	851	0.98	939	1.16	1020	1.36	1097	1.55	1169	1.76	1237	1.97	1302	2.19	1364	2.42
	6000	2831	0.86	213.89	857	1.54	931	1.75	1003	1.96	1074	2.19	1141	2.42	1207	2.67	1270	2.92	1332	3.17	-	-	-	-
	6875	3244	1.15	286.82	969	2.27	1034	2.5	1098	2.74	1161	2.99	1222	3.25	-	-	-	-	-	-	-	-	-	-
52015-S	4375	2065	0.43	107.06	659	0.65	758	0.81	851	0.98	939	1.16	1020	1.36	1097	1.55	1169	1.76	1237	1.97	1302	2.19	1364	2.42
	6000	2831	0.86	213.89	857	1.54	931	1.75	1003	1.96	1074	2.19	1141	2.42	1207	2.67	1270	2.92	1332	3.17	-	-	-	-
	6875	3244	1.15	286.82	969	2.27	1034	2.5	1098	2.74	1161	2.99	1222	3.25	-	-	-	-	-	-	-	-	-	-
51017-S	4769	2250	0.43	107.07	663	0.75	756	0.91	845	1.09	930	1.28	1011	1.47	1087	1.68	1159	1.89	1227	2.11	1292	2.34	1354	2.57
	6600	3115	0.88	218.22	872	1.83	941	2.04	1008	2.27	1075	2.5	1139	2.75	1202	3	1264	3.26	-	-	-	-	-	-
	7494	3536	1.15	286.84	979	2.63	1040	2.87	1100	3.12	-	-	-	-	-	-	-	-	-	-	-	-	-	-
52017-S	4769	2250	0.43	107.07	663	0.75	756	0.91	845	1.09	930	1.28	1011	1.47	1087	1.68	1159	1.89	1227	2.11	1292	2.34	1354	2.57
	6600	3115	0.88	218.22	872	1.83	941	2.04	1008	2.27	1075	2.5	1139	2.75	1202	3	1264	3.26	-	-	-	-	-	-
	7494	3536	1.15	286.84	979	2.63	1040	2.87	1100	3.12	-	-	-	-	-	-	-	-	-	-	-	-	-	-
52020-S	5250	2477	0.43	107.06	553	0.71	640	0.91	719	1.13	793	1.36	861	1.6	925	1.85	985	2.1	1041	2.38	1094	2.65	1142	2.92
	7500	3539	0.94	233.85	743	1.85	807	2.12	868	2.4	927	2.7	984	3	1038	3.3	1090	3.66	1141	4	1189	4.3	-	-
	8250	3893	1.15	286.82	810	2.42	868	2.71	924	3.02	979	3.3	1032	3.7	1083	4	1133	4.4	1180	4.7	-	-	-	-
52023-S	6300	2973	0.43	107.06	556	0.91	634	1.13	709	1.36	780	1.61	846	1.87	909	2.14	969	2.4	1026	2.7	1080	3	1131	3.3
	8800	4153	0.89	222.67	738	2.29	795	2.57	851	2.86	906	3.17	959	3.5	1012	3.8	1062	4.17	1112	4.5	1159	4.9	-	-
	9900	4672	1.15	286.82	821	3.2	873	3.51	923	3.84	973	4.18	1022	4.5	1070	4.89	1116	5.26	1162	5.65	-	-	-	-
52026-S	7292	3441	0.43	107.07	568	1.17	639	1.4	707	1.64	773	1.9	836	2.17	897	2.46	956	2.77	1012	3.1	1065	3.4	1117	3.7
	10416	4915	0.94	233.81	775	3.18	825	3.48	875	3.8	923	4.13	972	4.47	1019	4.8	1066	5.2	1112	5.57	1156	5.96	-	-
	11458	5407	1.15	286.81	847	4.19	892	4.52	937	4.86	982	5.2	1026	5.57	1070	5.95	1113	6.34	1155	6.74	1197	7.16	-	-
52030-S	8750	4129	0.43	107.06	599	1.68	659	1.92	718	2.18	776	2.45	833	2.74	889	3.05	943	3.37	996	3.7	1048	4	1097	4.4
	11500	5427	0.78	194.76	762	3.65	808	3.96	854	4.27	900	4.6	945	4.94	989	5.3	1033	5.66	1076	6	1119	6.4	1161	6.8
	13750	6489	1.15	286.82	901	6.14	940	6.5	979	6.87	1017	7.2	1055	7.6	1093	8	1130	8.5	1168	8.87	-	-	-	-
52032-S	8750	4129	0.43	107.06	599	1.68	659	1.92	718	2.18	776	2.45	833	2.74	889	3.05	943	3.37	996	3.7	1048	4	1097	4.4
	11500	5427	0.78	194.76	762	3.65	808	3.96	854	4.27	900	4.6	945	4.94	989	5.3	1033	5.66	1076	6	1119	6.4	1161	6.8
	13750	6489	1.15	286.82	901	6.14	940	6.5	979	6.87	1017	7.2	1055	7.6	1093	8	1130	8.5	1168	8.87	-	-	-	-
52038-S	10208	4817	0.43	107.05	478	1.64	538	1.96	594	2.3	648	2.66	700	3.03	749	3.42	796	3.81	841	4.22	884	4.65	926	5.08
	14580	6880	0.94	233.73	650	4.43	694	4.87	736	5.33	777	5.81	817	6.29	856	6.79	914	7.29	931	7.81	968	8.33	-	-
	16042	7570	1.15	286.84	710	5.83	750	6.32	789	6.82	827	7.33	864	7.86	900	8.39	935	8.93	970	9.49	-	-	-	-
52045-S	12031	5677	0.43	107.06	497	2.23	551	2.59	603	2.97	652	3.36	700	3.76	746	4.18	791	4.61	834	5.05	875	5.51	916	5.97
	17000	8022	0.92	228.33	675	5.93	714	6.42	753	6.93	790	7.45	827	7.98	863	8.52	898	9.07	932	9.63	966	10.2	1000	10.78
	18906	8922	1.15	286.82	746	8.07	781	8.62	816	9.18	850	9.75	883	10.33	916	10.91	949	11.51	982	12.12	-	-	-	-
52050-S	13125	6194	0.43	107.06	512	2.66	563	3.05	611	3.45	659	3.86	704	4.28	748	4.72	791	5.17	833	5.64	873	6.11	912	6.59
	18750	8848	0.94	233.85	705	7.36	741	7.9	777	8.44	812	9	846	9.56	880	10.14	913	10.72	946	11.32	978	11.92	-	-
	20625	9733	1.15	286.82	771	9.72	804	10.31	837	10.9	869	11.5	900	12.12	932	12.74	-	-	-	-	-	-	-	-
52055-S	14000	6607	0.6	148.59	566	3.39	612	3.81	658	4.24	702	4.68	745	5.13	786	5.59	827	6.07	866	6.56	905	7.06	942	7.56
	18750	8848	1.02	255.22	721	7.59	757	8.13	792	8.68	827	9.24	861	9.81	894	10.39	927	10.98	959	11.58	991	12.18	-	-
	22000	10382	1.37	340.91	828	11.89	858	12.51	-	-	-	-	-	-	-	-	-	-	-	-	-	-	-	-
52065-S	17150	8093	0.64	159.22	344	3.5	375	4.01	405	4.55	434	5.12	462	5.72	489	6.35	515	7	541	7.68	566	8.37	590	9.09
	23000	10854	1.1	273.66	437	7.73	460	8.38	484	9.05	506	9.75	529	10.47	551	11.22	572	11.98	593	12.77	614	13.58	635	14.41
	26950	12718	1.46	364.45	500	11.99	520	12.73	540	13.49	560	14.28	579	15.09	599	15.91	-	-	-	-	-	-	-	-
53070-S	19294	9105	0.64	159.23	294	3.6	323	4.2	351	4.82	377	5.48	402	6.16	427	6.87	450	7.6	473	8.36	495	9.15	516	9.95
	25600	12081	1.08	268.33	367	7.65	389	8.4	412	9.18	433	9.98	454	10.81	475	11.66	495	12.53	514	13.42	533	14.33	552	15.26
	30319</																							

SKM Packaged Air Conditioning Units PAC-V Series - R134a

FAN PERFORMANCE - 60Hz

PACV	Air Flow Rate		Internal Static Pressure		External Static Pressure in.wg (Pa)																			
	cfm	l/s	in.wg	Pa	0.2 (50)		0.4 (100)		0.6 (149)		0.8 (199)		1.0 (249)		1.2 (299)		1.4 (349)		1.6 (399)		1.8 (448)		2.0 (498)	
					RPM	kW	RPM	kW	RPM	kW	RPM	kW	RPM	kW	RPM	kW	RPM	kW	RPM	kW	RPM	kW	RPM	kW
61009-S	2333	1101	0.54	133.62	678	0.38	767	0.46	850	0.54	930	0.63	1004	0.72	1075	0.82	1141	0.92	1205	1.02	1265	1.13	1323	1.24
	3000	1416	0.92	229.74	839	0.75	909	0.85	977	0.95	1043	1.06	1107	1.17	1169	1.28	1229	1.4	1286	1.52	1342	1.64	1395	1.77
	3667	1730	1.42	353.97	1009	1.33	1067	1.45	1124	1.57	1179	1.69	1234	1.82	1288	1.95	1340	2.09	1391	2.23	1441	2.37	1490	2.51
61012-S	3208	1514	0.54	133.63	570	0.49	642	0.6	711	0.71	775	0.83	837	0.96	895	1.09	950	1.22	1002	1.36	1052	1.5	1100	1.65
	4000	1888	0.86	214.78	686	0.9	745	1.02	802	1.16	858	1.3	911	1.44	963	1.59	1013	1.75	1061	1.91	1107	2.07	1152	2.24
	5042	2379	1.42	353.95	849	1.74	896	1.89	943	2.05	989	2.22	1033	2.39	1077	2.57	1120	2.75	1162	2.94	1200	3.13	-	-
61018-S	4375	2065	0.49	123.02	691	0.7	788	0.87	880	1.04	965	1.22	1045	1.42	1121	1.62	1191	1.83	1258	2.04	1322	2.26	1383	2.49
	6000	2831	0.99	245.93	905	1.67	978	1.89	1049	2.11	1117	2.34	1184	2.58	1248	2.83	1310	3.08	1370	3.34	-	-	-	-
	6875	3244	1.33	330.36	1026	2.47	1090	2.71	1153	2.96	1215	3.22	-	-	-	-	-	-	-	-	-	-	-	-
62018-S	4375	2065	0.49	123.02	691	0.7	788	0.87	880	1.04	965	1.22	1045	1.42	1121	1.62	1191	1.83	1258	2.04	1322	2.26	1383	2.49
	6000	2831	0.99	245.93	905	1.67	978	1.89	1049	2.11	1117	2.34	1184	2.58	1248	2.83	1310	3.08	1370	3.34	-	-	-	-
	6875	3244	1.33	330.36	1026	2.47	1090	2.71	1153	2.96	1215	3.22	-	-	-	-	-	-	-	-	-	-	-	-
61020-S	4769	2250	0.49	123.04	693	0.8	785	0.97	873	1.15	957	1.34	1036	1.54	1110	1.75	1181	1.96	1248	2.18	1312	2.41	1374	2.65
	6600	3115	1.01	250.92	917	1.97	985	2.19	1052	2.42	1117	2.66	1181	2.91	1243	3.17	-	-	-	-	-	-	-	-
	7494	3536	1.33	330.39	1032	2.84	1093	3.09	1152	3.35	-	-	-	-	-	-	-	-	-	-	-	-	-	-
62020-S	4769	2250	0.49	123.04	693	0.8	785	0.97	873	1.15	957	1.34	1036	1.54	1110	1.75	1181	1.96	1248	2.18	1312	2.41	1374	2.65
	6600	3115	1.01	250.92	917	1.97	985	2.19	1052	2.42	1117	2.66	1181	2.91	1243	3.17	-	-	-	-	-	-	-	-
	7494	3536	1.33	330.39	1032	2.84	1093	3.09	1152	3.35	-	-	-	-	-	-	-	-	-	-	-	-	-	-
62024-S	5250	2477	0.49	123.02	581	0.77	666	0.98	744	1.2	815	1.44	882	1.68	944	1.93	999	2.2	1054	2.5	1107	2.7	1157	3
	7500	3539	1.08	268.97	788	2.04	850	2.32	910	2.62	965	2.9	1020	3.2	1072	3.56	1123	3.9	1172	4.2	-	-	-	-
	8250	3893	1.33	330.36	861	2.67	917	2.98	971	3.3	1024	3.6	1075	4	1125	4.3	1173	4.7	-	-	-	-	-	-
62028-S	6300	2973	0.49	123.02	581	0.98	659	1.2	732	1.44	801	1.69	867	1.96	929	2.23	984	2.5	1066	2.95	1118	3.26	1168	3.6
	8800	4153	1.03	256.05	776	2.47	833	2.76	888	3.07	943	3.39	994	3.72	1045	4.1	1094	4.4	1142	4.8	1189	5.2	-	-
	9900	4672	1.33	330.36	866	3.47	917	3.8	966	4.1	1015	4.5	1062	4.86	1109	5.2	1155	5.6	1199	6	-	-	-	-
62033-S	7292	3441	0.49	123.03	591	1.24	661	1.47	728	1.72	793	1.99	856	2.27	916	2.56	970	2.86	1025	3.2	1078	3.5	1129	3.8
	10416	4915	1.08	268.93	810	3.39	860	3.7	909	4.03	956	4.4	1003	4.7	1050	5.1	1095	5.5	1140	5.85	1184	6.3	-	-
	11458	5407	1.33	330.34	886	4.48	932	4.82	976	5.2	1020	5.5	1063	5.9	1106	6.3	1149	6.7	1190	7.1	-	-	-	-
62036-S	8750	4129	0.49	123.02	618	1.76	678	2	737	2.27	795	2.55	851	2.84	907	3.15	957	3.5	1009	3.8	1060	4.15	1109	4.5
	11500	5427	0.9	223.86	789	3.83	835	4.14	881	4.46	926	4.8	969	5.16	1013	5.5	1057	5.9	1100	6.28	1142	6.68	1184	7.1
	13750	6489	1.33	330.36	935	6.46	973	6.85	1011	7.2	1049	7.6	1087	8	1124	8.4	1161	8.8	-	-	-	-	-	-
62037-S	8750	4129	0.49	123.02	618	1.76	678	2	737	2.27	795	2.55	851	2.84	907	3.15	957	3.5	1009	3.8	1060	4.15	1109	4.5
	11500	5427	0.9	223.86	789	3.83	835	4.14	881	4.46	926	4.8	969	5.16	1013	5.5	1057	5.9	1100	6.28	1142	6.68	1184	7.1
	13750	6489	1.33	330.36	935	6.46	973	6.85	1011	7.2	1049	7.6	1087	8	1124	8.4	1161	8.8	-	-	-	-	-	-
62046-S	10208	4817	0.49	123.01	497	1.74	556	2.07	612	2.42	665	2.78	716	3.15	764	3.54	810	3.94	855	4.36	898	4.78	939	5.22
	14580	6880	1.08	268.83	681	4.74	724	5.2	765	5.67	805	6.15	845	6.64	883	7.14	920	7.65	957	8.18	993	8.71	-	-
	16042	7570	1.33	330.38	745	6.26	784	6.76	822	7.27	859	7.79	895	8.32	931	8.86	966	9.42	999	10	-	-	-	-
62055-S	12031	5677	0.6	148.58	542	2.53	594	2.9	644	3.29	692	3.7	739	4.11	784	4.54	827	4.98	869	5.43	909	5.89	948	6.37
	17000	8022	1.13	281.59	717	6.46	755	6.97	793	7.49	829	8.02	865	8.56	900	9.11	935	9.67	969	10.24	999	10.8	-	-
	18906	8922	1.37	340.9	784	8.67	819	9.23	853	9.8	886	10.38	919	10.96	951	11.56	983	12.17	-	-	-	-	-	-
62060-S	13125	6194	0.6	148.59	554	2.98	604	3.38	651	3.79	697	4.21	741	4.65	784	5.1	826	5.56	867	6.03	906	6.51	944	7
	18750	8848	1.15	287.28	744	7.94	779	8.48	814	9.04	849	9.6	882	10.18	915	10.77	948	11.36	980	11.97	-	-	-	-
	20625	9733	1.37	340.91	807	10.36	840	10.95	872	11.56	903	12.17	934	12.8	-	-	-	-	-	-	-	-	-	-
62066-S	14000	6607	0.68	169.66	586	3.57	632	3.99	677	4.42	720	4.87	763	5.32	804	5.79	844	6.27	883	6.77	921	7.27	958	7.78
	18750	8848	1.16	289.95	746	7.97	781	8.51	816	9.07	850	9.63	884	10.21	917	10.8	950	11.39	982	12	-	-	-	-
	22000	10382	1.55	386.56	856	12.46	-	-	-	-	-	-	-	-	-	-	-	-	-	-	-	-	-	-
62076-S	17150	8093	0.72	180.3	357	3.71	388	4.23	417	4.79	446	5.37	473	5.99	500	6.62	526	7.29	551	7.97	576	8.68	599	9.4
	23000	10854	1.24	308.47	453	8.18	477	8.85	500	9.54	522	10.25	544	10.99	566	11.75	587	12.53	608	13.33	629	14.16	649	15
	26950	12718	1.65	410.1	518	12.67	538	13.43	558	14.21	578	15.02	597	15.84	-	-	-	-	-	-	-	-	-	-
63085-S	19294	9105	0.72	180.3	306	3.85	335	4.46	362	5.1	388	5.76	413	6.46	437	7.18	460	7.92	482	8.69	504	9.48	525	10.3
	25600	12081	1.21	302.51	382	8.16	405	8.93	427	9.73	448	10.55	468	11.39	489	12.25	508	13.14	527	14.04	546	14.97	564	15.91
	30319	14308	1.65	410.1	439	12.94	459	13.83	478	14.75	496	15.68	514	16.64	532	17.62	550	18.61	-	-	-	-	-	-
63090-S	19294	9105	0.72	180.3	306	3.85	335	4.46	362	5.1	388	5.76	413	6.46	437	7.18	460	7.92	482	8.69	504	9.48	525	10.3
	25600	12081	1.21	302.51	382	8.16	405	8.93	427	9.73	448	10.55	468	11.39	489	12.25	508	13.14	527	14.04	546	14.97	564	15.91
	30319	14308	1.65	410.1	439	12.94	459	13.83	478	14.75	496	15.68	514	16.64	532	17.62	550	18.61	-	-	-	-	-	-
63095-S	21437	10116	1.27	180.29	311	4.58	338	5.22	364	5.89	389	6.59	413	7.31	436	8.06	458	8.84	480	9.63	501	10.45	522	11.29
	28400	13402	1.21	301.65	390	9.78	411	10.6	431	11.44	451	12.3	471	13.18	490	14.08	509	15.01	528	15.95	546	16.92	563	17.9
	33687	15897	1.65	410.09	449	15.66	468	16.61	485	17.58	503	18.56	-											

SKM Packaged Air Conditioning Units PAC-V Series - R134a

Selection Procedure

PACV series packaged air-conditioners should be selected with care and using sound engineering judgement. Selections based on matching total capacity alone or air flow rate alone may not be proper. To meet requirements of a specific application, sample procedure for selection is given in examples below.

Application Requirements	Example 1: English Units	Example 2: SI Units
Required total cooling capacity.....	340.0 MBH	108.4 kW
Sensible cooling capacity	225.0 MBH	71.8 kW
Condenser entering air temp db.....	115°F	46°C
Evaporator entering air temp. db/wb	83/68°F	28.3/20.0°C
Evaporator air flow rate	11,200 cfm	5286 l/s
External static pressure	1.2 inwg	300 Pa
Electric power supply	380V/3PH/50Hz	380V/3PH/50Hz

Select **PACV** model, Evaporator fan motor size and find leaving db/wb conditions.

Selection Procedure:

Enter capacity ratings table (50Hz) at required condenser entering air temperature. Select a unit having total capacity equal or more than specified. Select unit model **PACV-52032-S**, by interpolation, at 11,200 cfm (5,286 l/s) and 68°F (20.0°C) wb. Unit will provide 340.18 MBH (99.60 kW) total cooling capacity, 239.066 MBH (70 kW) sensible cooling at 80°F (26.7°C) evaporator entering air bulb.

To calculate sensible capacity (SC2) at conditions other than 80°F (26.7°C) evaporator entering air dry bulb, use the formulae as shown	$SC2 = SC1 + SCC$ $= SC1 + 0.0011 (1 - BPF)(EDB - 80) \times cfm$ $= 239.07 + 0.0011 (1 - 0.22)(83 - 80) \times 11,200$ $= 267.9 \text{ MBH}$ <p>where SC2 = corrected sensible capacity at given evap. entering air dry bulb ° SC1 = sensible capacity at 80°F (26.7°C) DB evaporator entering air temperature SCC = sensible cooling correction BPF = bypass factor E_{db} = evaporator entering air dry bulb cfm & L/S = evaporator air flow rate</p>	$SC2 = SC1 + SCC$ $= SC1 + 0.00123 (1 - BPF)(E_{db} - 26.7) \times l/s$ $= 70 + 0.00123 (1 - 0.22)(28.3 - 26.7) \times 5286$ $= 78.11 \text{ kW}$
Calculate leaving evaporator air temperature	$L_{db} = E_{db} - \frac{\text{Sensible capacity (MBH)}}{0.0011 \times cfm}$ $= 83 - \frac{267.9}{0.0011 \times 11,200}$ $= 61.52^\circ\text{F}$ <p>where E_{db} = Entering evaporator air dry bulb temperature L_{db} = Leaving evaporator air dry bulb temperature L_{wb} = Leaving air wet bulb temperature corresponding to enthalpy of air leaving evaporator coil</p>	$L_{db} = E_{db} - \frac{\text{Sensible capacity (kW)}}{0.00123 \times L/S}$ $= 28.3 - \frac{78.11}{0.00123 \times 5286}$ $= 16.29^\circ\text{C}$
Calculate leaving air wet bulb	$h_{L_{wb}} = h_{E_{wb}} - \frac{\text{total capacity (BTUH)}}{4.5 \times cfm}$ $= 32.3 - \frac{340.18 \times 1000}{4.5 \times 11,200}$ $= 27.53 \text{ Btu/lb}$ $= 60.79^\circ\text{F } L_{WB}$ <p>where h_{L_{wb}} and h_{E_{wb}} are leaving and entering air enthalpy respectively Btu/lb (kJ/kg) L_{wb} = Leaving air wet bulb temperature</p>	$h_{L_{wb}} = h_{E_{wb}} - \frac{\text{total capacity (kW)} \times 1000}{1.2 \times L/S}$ $= 57.17 - \frac{99.6 \times 1000}{1.2 \times 5286}$ $= 41.47 \text{ kJ/kg}$ $= 15.9^\circ\text{C } L_{WB}$

To find out wet bulb temperatures corresponding to enthalpy of air refer to psychrometric chart or enthalpy of saturated air tables.

Selection of evaporator fan rpm and motor size

Enter fan performance table and interpolate for 11,200 cfm (5286 l/s) and 1.2 inwg. (300 Pa) ESP to get 978.1 rpm and 5.05 kW absorbed power.

Motor power = 1.2 x absorbed power
 = 1.2 x 5.05 = 6.06 kW
 Standard selected motor size = 7.5 kW (10HP)

SKM Computer selections are available for quick and proper selections

SKM Packaged Air Conditioning Units PAC-V Series - R134a

Capacity Control Steps

The number of capacity control steps required is determined by application and load.

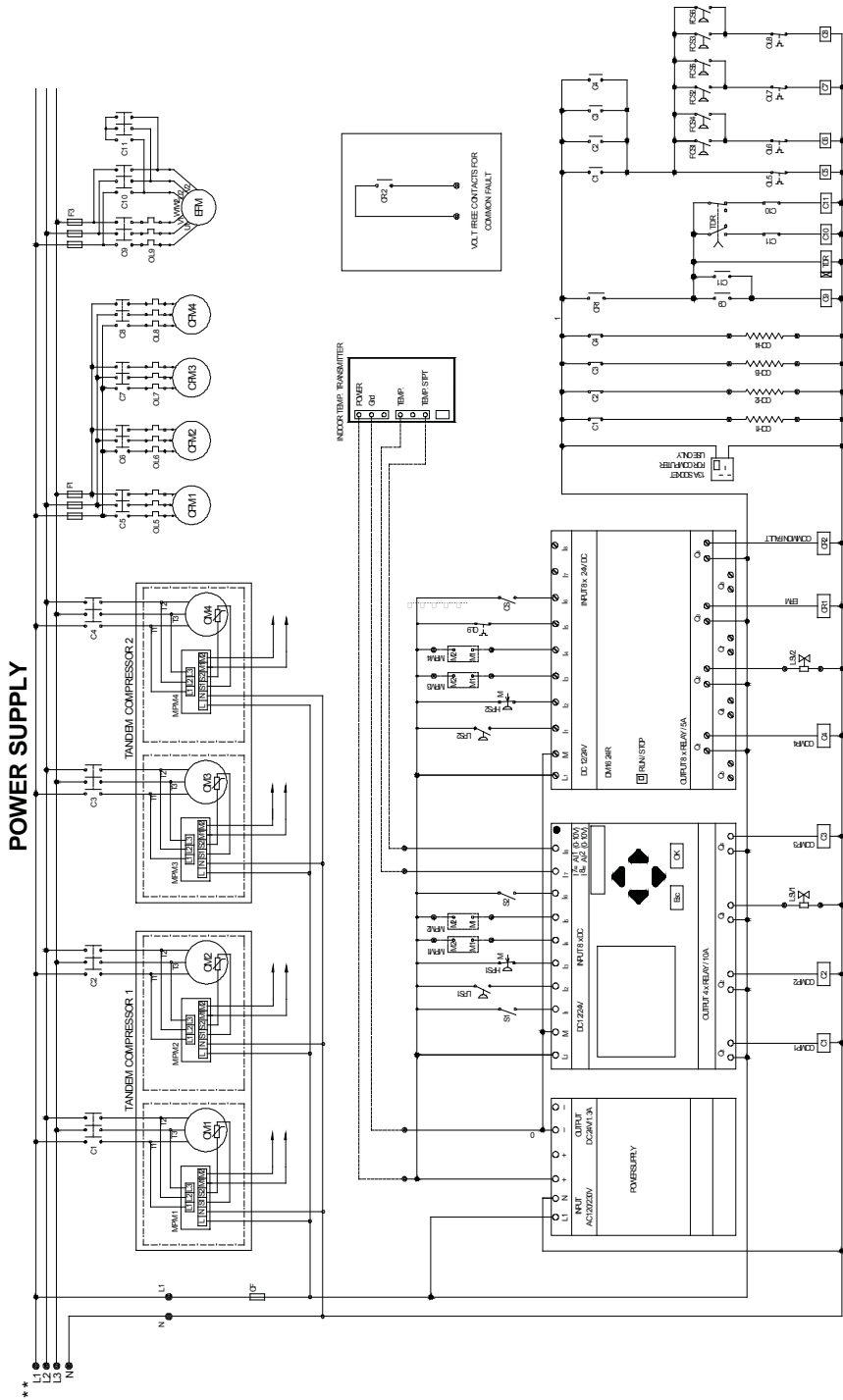
PACV-S		Standard	Number of steps
51008-S	61009-S	100-0	1
51010-S	61012-S	100-0	1
51014-S	61018-S	100-0	1
52015-S	62018-S	100-50-0	2
51017-S	61020-S	100-0	1
52017-S	62020-S	100-56-0	2
52020-S	62024-S	100-50-0	2
52023-S	62028-S	100-58-0	2
52026-S	62033-S	100-50-0	2
52030-S	62036-S	100-55-0	2
52032-S	62037-S	100-50-0	2
52038-S	62046-S	100-75-50-25-0	4
52045-S	62055-S	100-79-50-29-0	4
52050-S	62060-S	100-75-50-25-0	4
52055-S	62066-S	100-77-50-27-0	4
52065-S	62076-S	100-75-50-25-0	4
53070-S	63085-S	100-86-67-53-33-19-0	6
53075-S	63090-S	100-83-67-50-33-17-0	6
53080-S	63095-S	100-83-67-50-33-17-0	6
53085-S	63100-S	100-85-69-53-34-18-0	6
53090-S	63105-S	100-85-68-53-35-18-0	6
53095-S	63110-S	100-85-68-51-34-17-0	6
54100-S	64120-S	100-88-75-63-50-38-25-13-0	8
54110-S	64130-S	100-88-76-65-51-39-25-14-0	8
54115-S	64136-S	100-89-75-64-51-40-26-13-0	8
54125-S	64145-S	100-88-75-63-50-38-25-13-0	8

Table 8



SKM Packaged Air Conditioning Units PAC-V Series - R134a

Typical Wiring Diagram



Legend :

- C Contactor
- CCH Crank Case Heater
- CF Control Fuse
- CFM Condenser Fan Motor
- CM Compressor Motor
- CR Control Relay
- CS Control Switch
- EFM Evaporator Fan Motor
- F Power Circuit Fuse
- FCS Fan Cycling Switch
- HPS High Pressure Switch
- LPS Low Pressure Switch
- LSV Liquid Line Solenoid Valve
- MP Motor Protector
- OFH Oil Failure Heater
- OPS Oil Failure Switch
- OL Overload Relay
- P Pressure Activated Switch
- Field Wiring & Field Supplied Devices

** Provide Overcurrent, short circuit, earth fault protection & disconnect means as required by local and national electric code.



SKM Packaged Air Conditioning Units PAC-V Series - R134a

ELECTRICAL DATA

POWER SUPPLY : 380-415V / 3PH / 50Hz

MODEL PACV-S	UNIT CHARACTERISTIC			COMPRESSOR			CONDENSER FAN MOTOR			EVAPORAT FAN MOTOR		
	MFA	MCA	ICF	Qty	RLA	LRA	QTY	FLA	LRA	QTY	FLA	LRA
			DOL									
51008-S	63	37	158	1	23	145	2	1.1	4.7	1	3.7	17.1
51010-S	63	39	188	1	25	175	2	1.1	4.7	1	3.7	17.1
51014-S	100	58	240	1	36	215	2	2.1	8.7	1	7.1	35.1
52015-S	100	65	186	2	23	145	2	2.1	8.7	1	7.1	35.1
51017-S	125	77	297	1	49	270	2	2.1	8.7	1	9.2	49.4
52017-S	100	70	218	1+1	25+23	175+145	2	2.1	8.7	1	9.2	49.4
52020-S	100	76	232	2	25	175	2	4.3	18.7	1	9.2	49.4
52023-S	125	90	272	1+1	36+25	215+175	2	4.3	18.7	1	9.2	49.4
52026-S	160	108	290	2	36	215	3	4.3	18.7	1	11.7	72.0
52030-S	200	127	349	1+1	49+36	270+215	3	4.3	18.7	1	15.2	117.0
52032-S	200	141	362	2	49	270	3	4.3	18.7	1	15.2	117.0
52038-S	160	136	293	4	25	175	3	4.3	18.7	1	15.2	117.0
52045-S	250	171	354	2+2	36+25	215+175	4	4.3	18.7	1	21.1	163.0
52050-S	250	193	376	4	36	215	4	4.3	18.7	1	21.1	163.0
52055-S	315	223	444	2+2	49+36	270+215	4	4.3	18.7	1	21.1	163.0
52065-S	315	257	478	4	49	270	4	4.3	18.7	1	29.7	216.0
53070-S	315	250	432	3+3	36+25	215+175	6	4.3	18.7	1	29.7	216.0
53075-S	400	283	465	6	36	215	6	4.3	18.7	1	29.7	216.0
53080-S	400	283	465	6	36	215	6	4.3	18.7	1	29.7	216.0
53085-S	400	312	533	2+4	49+36	270+215	6	4.3	18.7	1	29.7	216.0
53090-S	400	338	559	4+2	49+36	270+215	6	4.3	18.7	1	29.7	216.0
53095-S	500	357	578	5+1	49+36	270+215	6	4.3	18.7	1	36.0	255.0
54100-S	500	369	552	8	36	215	8	4.3	18.7	1	36.0	255.0
54110-S	500	412	633	3+5	49+36	270+215	8	4.3	18.7	1	36.0	255.0
54115-S	500	438	659	5+3	49+36	270+215	8	4.3	18.7	1	36.0	255.0
54125-S	630	484	705	8	49	270	8	4.3	18.7	1	43.0	308.0

Table 9

POWER SUPPLY : 440V / 3PH / 50Hz

MODEL PACV-S	UNIT CHARACTERISTIC			COMPRESSOR			CONDENSER FAN MOTOR			EVAPORAT FAN MOTOR		
	MFA	MCA	ICF	Qty	RLA	LRA	QTY	FLA	LRA	QTY	FLA	LRA
			DOL									
51008-S	63	36	157	1	23	145	2	1.1	4.3	1	3.2	16.0
51010-S	63	39	187	1	25	175	2	1.1	4.3	1	3.2	16.0
51014-S	100	57	237	1	36	215	2	1.8	7.9	1	6.5	33.5
52015-S	100	64	184	2	23	145	2	1.8	7.9	1	6.5	33.5
51017-S	125	75	294	1	49	270	2	1.8	7.9	1	8.0	43.0
52017-S	100	68	216	1+1	25+23	175+145	2	1.8	7.9	1	8.0	43.0
52020-S	100	73	228	2	25	175	2	3.6	16.0	1	8.0	43.0
52023-S	125	87	268	1+1	36+25	215+175	2	3.6	16.0	1	8.0	43.0
52026-S	160	104	284	2	36	215	3	3.6	16.0	1	9.8	65.0
52030-S	200	124	343	1+1	49+36	270+215	3	3.6	16.0	1	13.6	104.0
52032-S	200	137	356	2	49	270	3	3.6	16.0	1	13.6	104.0
52038-S	160	133	287	4	25	175	3	3.6	16.0	1	13.6	104.0
52045-S	200	166	346	2+2	36+25	215+175	4	3.6	16.0	1	18.5	135.0
52050-S	250	188	368	4	36	215	4	3.6	16.0	1	18.5	135.0
52055-S	315	217	436	2+2	49+36	270+215	4	3.6	16.0	1	18.5	135.0
52065-S	315	251	470	4	49	270	4	3.6	16.0	1	26.5	197.0
53070-S	315	242	423	3+3	36+25	215+175	6	3.6	16.0	1	26.5	197.0
53075-S	315	275	456	6	36	215	6	3.6	16.0	1	26.5	197.0
53080-S	315	275	456	6	36	215	6	3.6	16.0	1	26.5	197.0
53085-S	400	304	524	2+4	49+36	270+215	6	3.6	16.0	1	26.5	197.0
53090-S	400	330	550	4+2	49+36	270+215	6	3.6	16.0	1	26.5	197.0
53095-S	400	349	569	5+1	49+36	270+215	6	3.6	16.0	1	32.5	227.8
54100-S	400	360	541	8	36	215	8	3.6	16.0	1	32.5	227.8
54110-S	500	403	622	3+5	49+36	270+215	8	3.6	16.0	1	32.5	227.8
54115-S	500	429	648	5+3	49+36	270+215	8	3.6	16.0	1	32.5	227.8
54125-S	630	474	693	8	49	270	8	3.6	16.0	1	39.0	275.4

Table 10



SKM Packaged Air Conditioning Units PAC-V Series - R134a

ELECTRICAL DATA

POWER SUPPLY : 380V / 3PH / 60Hz

MODEL PACV-S	UNIT CHARACTERISTIC			COMPRESSOR			CONDENSER FAN MOTOR			EVAPORAT FAN MOTOR		
	MFA	MCA	ICF	Qty	RLA	LRA	QTY	FLA	LRA	QTY	FLA	LRA
			DOL									
61009-S	80	43	170	1	27	155	2	1.7	5.6	1	3.4	15.3
61012-S	80	49	251	1	31	235	2	1.7	5.6	1	4.9	22.8
61018-S	125	70	291	1	44	260	2	3.2	12.2	1	6.7	31.3
62018-S	125	76	204	2	27	155	2	3.2	12.2	1	6.7	31.3
61020-S	160	83	338	1	53	305	2	3.2	12.2	1	8.4	44.0
62020-S	125	83	286	1+1	31+27	235+155	2	3.2	12.2	1	8.4	44.0
62024-S	125	91	307	2	31	235	2	5.4	27.5	1	8.4	44.0
62028-S	160	107	332	1+1	44+31	260+235	2	5.4	27.5	1	8.4	44.0
62033-S	200	129	354	2	44	260	3	5.4	27.5	1	11.4	65.0
62036-S	200	143	402	1+1	53+44	305+260	3	5.4	27.5	1	15.0	99.0
62037-S	250	152	411	2	53	305	3	5.4	27.5	1	15.0	99.0
62046-S	200	165	381	4	31	235	3	5.4	27.5	1	15.0	99.0
62055-S	250	206	431	2+2	44+31	260+235	4	5.4	27.5	1	21.6	136.0
62060-S	315	239	464	4	44	260	4	5.4	27.5	1	28.4	189.0
62066-S	315	259	518	2+2	53+44	305+260	4	5.4	27.5	1	28.4	189.0
62076-S	400	277	536	4	53	305	4	5.4	27.5	1	28.4	189.0
63085-S	400	299	524	3+3	44+31	260+235	6	5.4	27.5	1	28.4	189.0
63090-S	400	338	563	6	44	260	6	5.4	27.5	1	28.4	189.0
63095-S	400	338	563	6	44	260	6	5.4	27.5	1	28.4	189.0
63100-S	500	358	617	2+4	53+44	305+260	6	5.4	27.5	1	28.4	189.0
63105-S	500	376	635	4+2	53+44	305+260	6	5.4	27.5	1	28.4	189
63110-S	500	391	650	5+1	53+44	305+260	6	5.4	27.5	1	34.0	227.8
64120-S	500	442	667	8	44	260	8	5.4	27.5	1	34.0	227.8
64130-S	630	471	730	3+5	53+44	305+260	8	5.4	27.5	1	34.0	227.8
64136-S	630	489	748	5+3	53+44	305+260	8	5.4	27.5	1	34.0	227.8
64145-S	630	523	782	8	53	305	8	5.4	27.5	1	41.0	275.4

Table 9

POWER SUPPLY : 460V / 3PH / 60Hz

MODEL PACV-S	UNIT CHARACTERISTIC			COMPRESSOR			CONDENSER FAN MOTOR			EVAPORAT FAN MOTOR		
	MFA	MCA	ICF	Qty	RLA	LRA	QTY	FLA	LRA	QTY	FLA	LRA
			DOL									
61009-S	63	38	162	1	23	145	2	1.7	6.6	1	3.4	18.0
61012-S	80	41	193	1	25	175	2	1.7	6.6	1	4.5	26.3
61018-S	100	58	250	1	36	215	2	2.6	14.4	1	6.2	36.5
62018-S	100	65	191	2	23	145	2	2.6	14.4	1	6.2	36.5
61020-S	125	76	307	1	49	270	2	2.6	14.4	1	7.8	51.0
62020-S	100	69	223	1+1	25+23	175+145	2	2.6	14.4	1	7.8	51.0
62024-S	100	76	244	2	25	175	2	5.0	31.5	1	7.8	51.0
62028-S	125	90	284	1+1	36+25	215+175	2	5.0	31.5	1	7.8	51.0
62033-S	160	108	302	2	36	215	3	5.0	31.5	1	9.8	75.0
62036-S	200	128	361	1+1	49+36	270+215	3	5.0	31.5	1	13.6	114.0
62037-S	200	141	374	2	49	270	3	5.0	31.5	1	13.6	114.0
62046-S	160	137	305	4	25	175	3	5.0	31.5	1	13.6	114.0
62055-S	250	171	366	2+2	36+25	215+175	4	5.0	31.5	1	18.4	156.0
62060-S	250	200	395	4	36	215	4	5.0	31.5	1	25.4	218.0
62066-S	315	230	463	2+2	49+36	270+215	4	5.0	31.5	1	25.4	218.0
62076-S	315	256	489	4	49	270	4	5.0	31.5	1	25.4	218.0
63085-S	315	249	444	3+3	36+25	215+175	6	5.0	31.5	1	25.4	218.0
63090-S	400	282	477	6	36	215	6	5.0	31.5	1	25.4	218.0
63095-S	400	282	477	6	36	215	6	5.0	31.5	1	25.4	218.0
63100-S	400	312	545	2+4	49+36	270+215	6	5.0	31.5	1	25.4	218.0
63105-S	400	338	571	4+2	49+36	270+215	6	5.0	31.5	1	25.4	218.0
63110-S	500	360	594	5+1	49+36	270+215	6	5.0	31.5	1	35.0	255.0
64120-S	500	374	569	8	36	215	8	5.0	31.5	1	35.0	255.0
64130-S	500	416	650	3+5	49+36	270+215	8	5.0	31.5	1	35.0	255.0
64136-S	500	442	676	5+3	49+36	270+215	8	5.0	31.5	1	35.0	255.0
64145-S	630	485	719	8	49	270	8	5.0	31.5	1	39.0	308.0

Table 10

SKM Packaged Air Conditioning Units PAC-V Series - R134a

ELECTRICAL DATA

POWER SUPPLY : 220V / 3PH / 60Hz

MODEL PACV-S	UNIT CHARACTERISTIC			COMPRESSOR			CONDENSER FAN MOTOR			EVAPORAT FAN MOTOR		
	MFA	MCA	ICF	Qty	RLA	LRA	QTY	FLA	LRA	QTY	FLA	LRA
			DOL									
61009-S	125	71	303	1	46	255	2	2.9	9.7	1	5.9	26.5
61012-S	160	84	481	1	54	380	2	2.9	9.7	1	8.4	39.5
61018-S	200	121	514	1	78	460	2	4.8	21.2	1	11.5	54.2
62018-S	200	127	339	2	46	255	2	4.8	21.2	1	11.5	54.2
61020-S	250	143	614	1	93	560	2	4.8	21.2	1	14.7	76.2
62020-S	200	140	464	1+1	54+46	380+255	2	4.8	21.2	1	14.7	76.2
62024-S	250	157	503	2	54	380	2	9.4	47.6	1	14.7	76.2
62028-S	315	187	586	1+1	78+54	460+380	2	9.4	47.6	1	14.7	76.2
62033-S	315	226	625	2	78	460	3	9.4	47.6	1	20.3	112.5
62036-S	400	250	725	1+1	93+78	560+460	3	9.4	47.6	1	26.0	171.5
62037-S	400	265	740	2	93	560	3	9.4	47.6	1	26.0	171.5
62046-S	400	286	634	4	54	380	3	9.4	47.6	1	26.0	171.5
62055-S	500	361	759	2+2	78+54	460+380	4	9.4	47.6	1	37.4	236.0
62060-S	500	420	819	4	78	460	4	9.4	47.6	1	49.2	327.0
62066-S	630	454	934	2+2	93+78	560+460	4	9.4	47.6	1	49.2	327.0
62076-S	630	484	964	4	93	560	4	9.4	47.6	1	49.2	327.0
63085-S	630	523	922	3+3	78+54	460+380	6	9.4	47.6	1	49.2	327.0
63090-S	800	595	994	6	78	460	6	9.4	47.6	1	49.2	327.0
63095-S	800	595	994	6	78	460	6	9.4	47.6	1	49.2	327.0
63100-S	800	629	1109	2+4	93+78	560+460	6	9.4	47.6	1	49.2	327.0
63105-S	800	659	1152	4+2	93+78	560+460	6	9.4	47.6	1	49.2	327.0
63110-S	800	687	1167	5+1	93+78	560+460	6	9.4	47.6	1	62.0	465.0
64120-S	1000	783	1181	8	78	460	8	9.4	47.6	1	62.0	465.0
64130-S	1000	831	1311	3+5	93+78	560+460	8	9.4	47.6	1	62.0	465.0
64136-S	1000	861	1354	5+3	93+78	560+460	8	9.4	47.6	1	62.0	465.0
64145-S	1250	919	1399	8	93	560	8	9.4	47.6	1	75.0	561.0

Table 13

Voltage imbalance between phases to be < 2%

LEGEND :

MFA Maximum Fuse Ampere
MCA Minimum Circuit Ampere (for wire sizing). Complies with NEC Article 430.24
RLA Rated Load Ampere

ICF Instantaneous Current Flow
DOL Direct On Line Start
PWS Part Winding Start
LRA Locked Rotor Ampere (DOL)
FLA Full Load Ampere

Component Air Pressure Drop

Components		Coil Face Velocity							
		fpm	300	350	400	450	500	550	600
		m/s	1.5	1.8	2	2.3	2.5	2.8	3.5
Flat Filters	aluminum filter 2"	in.wg	0.060	0.090	0.120	0.170	0.220	0.270	0.330
		Pa	15	22	30	42	55	67	82
	synthetic 2"	in.wg	0.150	0.170	0.200	0.230	0.270	0.310	0.350
		Pa	37	42	50	57	67	77	87
Vee Filters		in.wg	Flat filter PD X 0.7						
		Pa							
Bag Filters	22" depth	in.wg	0.220	0.300	0.380	0.490	0.600	0.730	0.860
		Pa	55	75	95	122	149	182	214
	30" depth	in.wg	0.200	0.270	0.350	0.450	0.550	0.670	0.790
		Pa	50	67	87	112	137	167	197
	36" depth	in.wg	0.180	0.250	0.320	0.410	0.500	0.610	0.720
		Pa	45	62	80	102	124	152	179

Electric Heater		in.wg	0.030	0.040	0.050	0.060	0.070	0.080	0.090
		Pa	7	10	12	15	17	20	22
Casing	1 Blower	in.wg	0.112	0.147	0.185	0.228	0.275	0.325	0.379
		Pa	28	37	46	57	68	81	94
	2 Blowers	in.wg	0.080	0.104	0.132	0.162	0.195	0.230	0.269
		Pa	20	26	33	40	48	57	67
Evaporator Coil (3/8" - 12 fpi)	4 Rows	in.wg	0.188	0.256	0.342	0.445	0.564	0.699	0.850
		Pa	47	64	85	111	140	174	211
	5 Rows	in.wg	0.235	0.320	0.428	0.556	0.705	0.874	1.062
		Pa	58	80	106	138	175	217	264
Evaporator Coil (5/8" - 12 fpi)	5 Rows	in.wg	0.325	0.423	0.532	0.650	0.778	0.916	1.063
		Pa	81	105	132	162	194	228	265
	6 Rows	in.wg	0.390	0.508	0.638	0.780	0.934	1.100	1.276
		Pa	97	126	159	194	232	274	317
Moisture Eliminator		in.wg	0.020	0.040	0.060	0.080	0.100	0.110	0.120
		Pa	5	10	15	20	25	27	30

Table 14

* Initial pressure drop based on 95% bag filter dust spot efficiency.

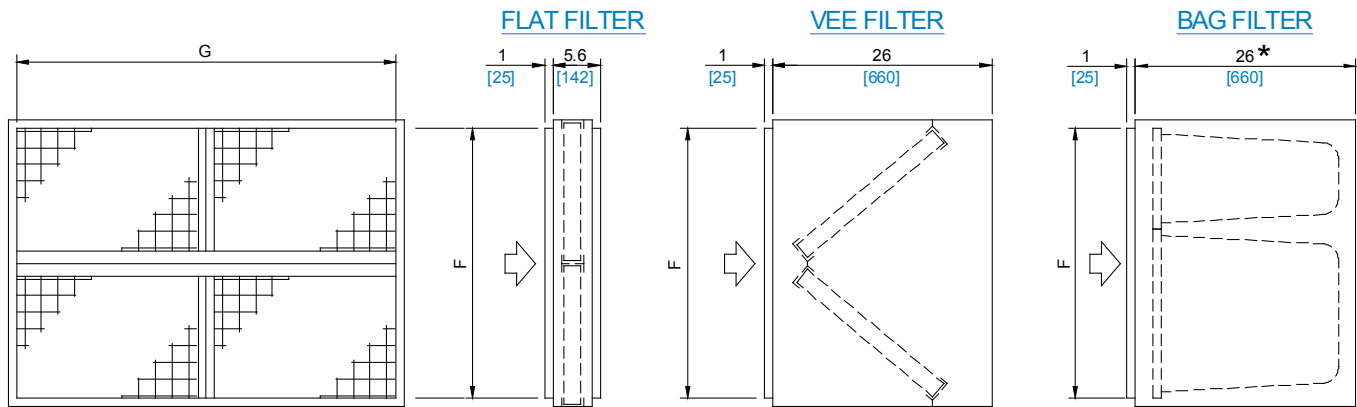
N.R. = Not Recommended



You name it....We cool it

SKM Packaged Air Conditioning Units PAC-V Series - R134a

Filter Dimensions & Sizes



MODEL PACV-	F	G	FLAT FILTER		VEE FILTER		BAG FILTER					
			SIZE H x L	QTY.	SIZE H x L	QTY.	SIZE H x L	QTY.	SIZE H x L	QTY.	SIZE H x L	QTY.
51008 S 61009 S	24 (610)	40 (1016)	25x20 (635x508)	2	-	20x20 (508x508)	4	24x20 (610x508)	2	-	-	-
51010 S 61012 S	30 (762)	44 (1118)	16x25 (406x635) 16x20 (406x508)	2 2	-	25x20 (635x508) 25x25 (635x635)	2 2	12x24 (305x610) 12x20 (305x508)	1 1	20x24 (508x610) 20x20 (508x508)	1 1	-
51014 S 61018 S	30 (762)	60 (1524)	16x20 (406x508)	6	-	25x20 (635x508)	6	12x20 (305x508)	3	20x20 (508x508)	3	-
52015 S 62018 S	30 (762)	60 (1524)	16x20 (406x508)	6	-	25x20 (635x508)	6	12x20 (305x508)	3	20x20 (508x508)	3	-
51017 S 61020 S	30 (762)	65 (1661)	16x25 (406x635) 16x20 (406x508)	2 4	-	25x16 (635x406) 25x25 (635x635)	2 4	12x24 (305x610) 12x20 (305x508)	1 2	20x24 (508x610) 20x20 (508x508)	1 2	-
52017 S 62020 S	30 (762)	65 (1661)	16x25 (406x635) 16x20 (406x508)	2 4	-	25x16 (635x406) 25x25 (635x635)	2 4	12x24 (305x610) 12x20 (305x508)	1 2	20x24 (508x610) 20x20 (508x508)	1 2	-
52020 S 62024 S	30 (762)	72 (1829)	16x16 (406x406) 16x20 (406x508)	4 4	-	25x20 (635x508) 25x25 (635x635)	2 4	12x24 (305x610) 20x24 (508x610)	3 3	-	-	-
52023 S 62028 S	36 (914)	72 (1829)	16x16 (406x406) 16x20 (406x508)	2 2	20x16 (508x406) 20x20 (508x508)	2 2	20x16 (508x406) 20x20 (508x508)	6 6	12x24 (305x610) 24x24 (610x610)	3 3	-	-
52026 S 62033 S	40 (1016)	75 (1905)	20x25 (508x635)	6	-	20x25 (508x635)	9	20x20 (508x508) 20x24 (508x610) 20x12 (508x305)	4 2 2	-	-	-
52030 S 62036 S	48 (1219)	75 (1905)	25x25 (635x635)	6	-	25x25 (635x635)	9	24x20 (610x508) 24x24 (610x610) 24x12 (610x305)	4 2 2	-	-	-
52032 S 62037 S	48 (1219)	75 (1905)	25x25 (635x635)	6	-	25x25 (635x635)	9	24x20 (610x508) 24x24 (610x610) 24x12 (610x305)	4 2 2	-	-	-
52038 S 62046 S	56 (1422)	75 (1905)	16x25 (406x635) 20x25 (508x635)	3 6	-	25x25 (635x635)	9	12x12 (305x305) 12x20 (305x508) 12x24 (305x610) 20x24 (508x610)	1 2 1 1	20x20 (508x508) 20x12 (508x305) 24x24 (610x610) 24x12 (610x305)	2 1 1 2	-
52045 S 62055 S	66 (1676)	75 (1905)	25x25 (635x635) 20x25 (508x635)	3 6	-	25x25 (635x635)	12	24x20 (610x508) 24x24 (610x610) 24x12 (610x305)	4 2 2	20x20 (508x508) 20x12 (508x305)	2 1	-
52050 S 62060 S	72 (1829)	75 (1905)	16x25 (406x635) 20x25 (508x635)	6 6	-	25x25 (635x635)	12	24x20 (610x508) 24x24 (610x610) 24x12 (610x305)	6 3 3	-	-	-
52055 S 62066 S	72 (1829)	80 (2032)	16x20 (406x508) 20x20 (508x508)	8 8	-	25x20 (635x508)	16	24x20 (610x508)	12	-	-	-
52065 S 62076 S	72 (1829)	98 (2489)	16x25 (406x635) 20x25 (508x635)	8 8	-	25x25 (635x635)	16	24x24 (610x610)	12	-	-	-
53070 S 63085 S	81 (2057)	98 (2489)	16x25 (406x635) 25x25 (635x635)	8 8	-	25x25 (635x635)	20	20x24 (508x610)	16	-	-	-
53075 S 63090 S	81 (2057)	98 (2489)	16x25 (406x635) 25x25 (635x635)	8 8	-	25x25 (635x635)	20	20x24 (508x610)	16	-	-	-
53080 S 63095 S	90 (2286)	98 (2489)	20x25 (508x635) 25x25 (635x635)	8 8	-	25x25 (635x635)	20	24x24 (610x610) 20x24 (508x610)	12 4	-	-	-
53085 S 63100 S	90 (2286)	102 (2591)	25x16 (635x406) 25x20 (635x508) 20x25 (508x635)	4 4 4	25x25 (635x635) 20x16 (508x406) 20x20 (508x508)	4 4 2	25x25 (635x635)	20	24x20 (610x508) 24x24 (610x610) 24x12 (610x305)	3 9 3	20x20 (508x508) 20x24 (508x610) 20x12 (508x305)	1 3 1
53090 S 63105 S	90 (2286)	108 (2743)	20x16 (508x406) 20x20 (508x508)	6 6	25x16 (635x406) 25x20 (635x508)	6 6	25x16 (635x406) 25x20 (635x508)	15 15	24x24 (610x610) 24x12 (610x305)	12 3	20x24 (508x610) 20x12 (508x305)	4 1
53095 S 63110 S	90 (2286)	115 (2921)	25x25 (635x635) 25x16 (635x406)	8 2	20x25 (508x635) 20x16 (508x406)	8 2	25x25 (635x635) 25x16 (635x406)	20 5	24x20 (610x508) 24x24 (610x610)	3 12	20x20 (508x508) 20x24 (508x610)	1 4
54100 S 64120 S	90 (2286)	118 (2997)	25x25 (635x635) 25x20 (635x508)	8 2	20x25 (508x635) 20x20 (508x508)	8 2	25x25 (635x635) 25x20 (635x508)	20 5	24x24 (610x610) 20x24 (508x610)	15 5	-	-
54110 S 64130 S	90 (2286)	122 (3099)	25x25 (635x635) 25x20 (635x508) 25x16 (635x406)	4 4 4	20x25 (508x635) 20x20 (508x508) 20x16 (508x406)	4 4 4	25x25 (635x635)	25	24x24 (610x610) 20x24 (508x610)	15 5	-	-
54115 S 64136 S	90 (2286)	128 (3251)	20x16 (508x406) 25x16 (635x406)	16 16	-	-	25x25 (635x635)	30	24x20 (610x508) 24x24 (610x610) 24x12 (610x305)	3 12 3	20x20 (508x508) 20x24 (508x610) 20x12 (508x305)	1 4 1
54125 S 64145 S	90 (2286)	136 (3454)	25x25 (635x635) 25x20 (635x508) 25x16 (635x406)	8 2 2	20x25 (508x635) 20x20 (508x508) 20x16 (508x406)	8 2 2	25x25 (635x635) 25x20 (635x508) 25x16 (635x406)	20 5 5	24x20 (610x508) 24x24 (610x610) 24x12 (610x305)	15 3 3	20x20 (508x508) 20x24 (508x610) 20x12 (508x305)	5 1 1

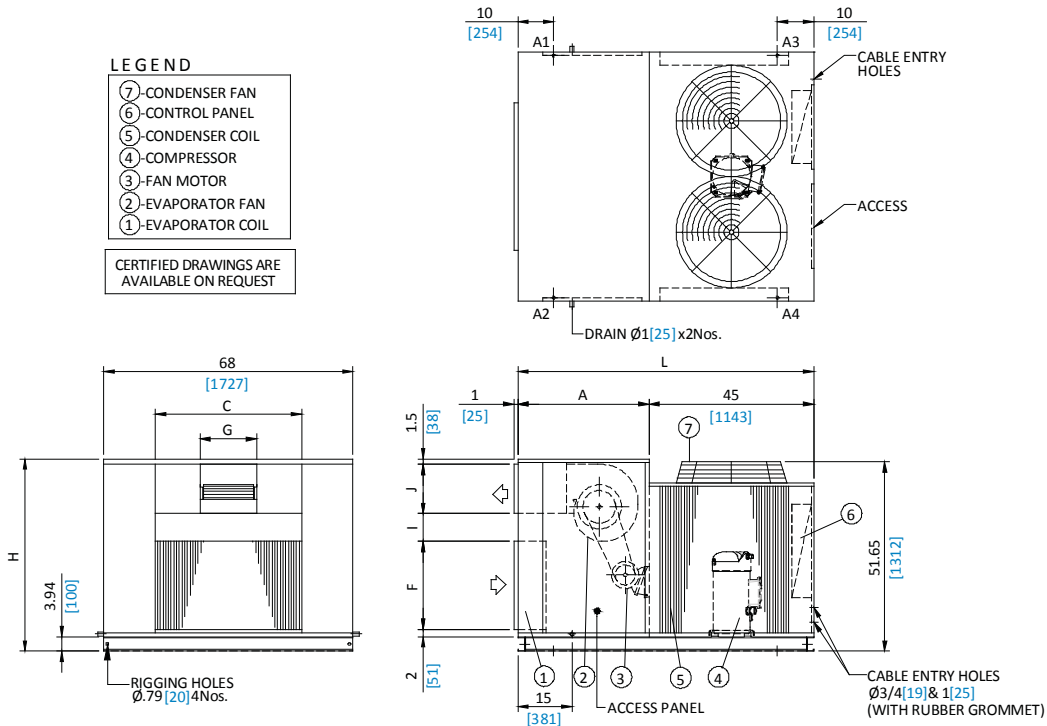
* BAG FILTER IS APPLICABLE FOR 22" DEPTH ALL DIMENSIONS ARE IN INCHES (MM)

Table 15

SKM Packaged Air Conditioning Units PAC-V Series - R134a

Dimensional Data

PACV Models: 51008 S, 51010 S & 61009 S, 61012 S



- LEGEND**
- ⑦-CONDENSER FAN
 - ⑥-CONTROL PANEL
 - ⑤-CONDENSER COIL
 - ④-COMPRESSOR
 - ③-FAN MOTOR
 - ②-EVAPORATOR FAN
 - ①-EVAPORATOR COIL
- CERTIFIED DRAWINGS ARE AVAILABLE ON REQUEST

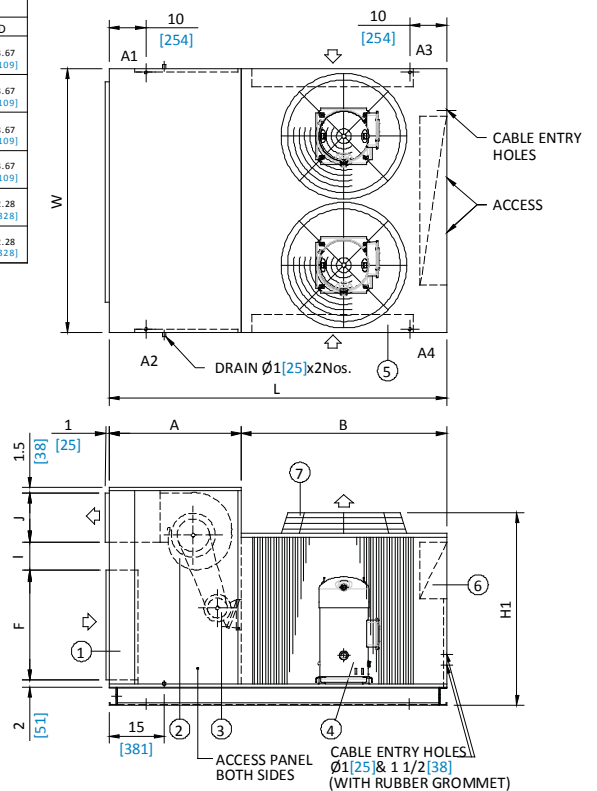
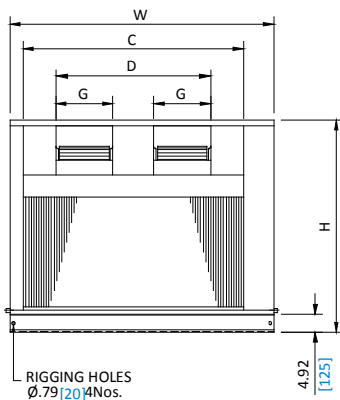
MODEL PACV-	DIMENSIONS							
	H	L	A	C	F	J	G	I
51008 S	52.44 [1332]	81 [2057]	36 [914]	40 [1016]	24 [610]	13.43 [341]	15.55 [395]	7.56 [192]
51010 S	61.91 [1572]	85 [2159]	40 [1016]	44 [1118]	30 [762]	15.91 [404]	18.54 [471]	8.54 [217]

PACV Models: 510145 S to 52023 S & 61018 S to 62028 S

MODEL PACV-	DIMENSIONS											
	H	W	H1	L	A	B	C	I	F	J	G	D
*51014 S	59.41 [1509]	74 [1880]	52.63 [1337]	92 [2337]	36 [914]	56 [1422]	60 [1524]	7.56 [192]	30 [762]	13.43 [341]	15.55 [395]	43.67 [1109]
*61018 S	59.41 [1509]	74 [1880]	52.63 [1337]	92 [2337]	36 [914]	56 [1422]	60 [1524]	7.56 [192]	30 [762]	13.43 [341]	15.55 [395]	43.67 [1109]
52015 S	59.41 [1509]	74 [1880]	52.63 [1337]	92 [2337]	36 [914]	56 [1422]	60 [1524]	7.56 [192]	30 [762]	13.43 [341]	15.55 [395]	43.67 [1109]
62018 S	59.41 [1509]	74 [1880]	52.63 [1337]	92 [2337]	36 [914]	56 [1422]	60 [1524]	7.56 [192]	30 [762]	13.43 [341]	15.55 [395]	43.67 [1109]
*51017 S	59.41 [1509]	76 [1930]	52.63 [1337]	92 [2337]	36 [914]	56 [1422]	65.4 [1661]	7.56 [192]	30 [762]	13.43 [341]	15.55 [395]	43.67 [1109]
*61020 S	59.41 [1509]	76 [1930]	52.63 [1337]	92 [2337]	36 [914]	56 [1422]	65.4 [1661]	7.56 [192]	30 [762]	13.43 [341]	15.55 [395]	43.67 [1109]
52017 S	59.41 [1509]	76 [1930]	52.63 [1337]	92 [2337]	36 [914]	56 [1422]	65.4 [1661]	7.56 [192]	30 [762]	13.43 [341]	15.55 [395]	43.67 [1109]
62020 S	59.41 [1509]	76 [1930]	52.63 [1337]	92 [2337]	36 [914]	56 [1422]	65.4 [1661]	7.56 [192]	30 [762]	13.43 [341]	15.55 [395]	43.67 [1109]
52020 S	62.87 [1597]	84 [2134]	60.63 [1540]	96 [2438]	40 [1016]	56 [1422]	72 [1829]	8.54 [217]	30 [762]	15.91 [404]	18.54 [471]	52.28 [1328]
62024 S	62.87 [1597]	84 [2134]	60.63 [1540]	96 [2438]	40 [1016]	56 [1422]	72 [1829]	8.54 [217]	30 [762]	15.91 [404]	18.54 [471]	52.28 [1328]
52023 S	68.87 [1749]	84 [2134]	60.63 [1540]	98 [2489]	40 [1016]	58 [1473]	72 [1829]	8.54 [217]	36 [914]	15.91 [404]	18.54 [471]	52.28 [1328]
62028 S	68.87 [1749]	84 [2134]	60.63 [1540]	98 [2489]	40 [1016]	58 [1473]	72 [1829]	8.54 [217]	36 [914]	15.91 [404]	18.54 [471]	52.28 [1328]

* MODEL WITH 1-COMPRESSOR

CERTIFIED DRAWINGS ARE AVAILABLE ON REQUEST



SKM Packaged Air Conditioning Units PAC-V Series - R134a

Dimensional Data

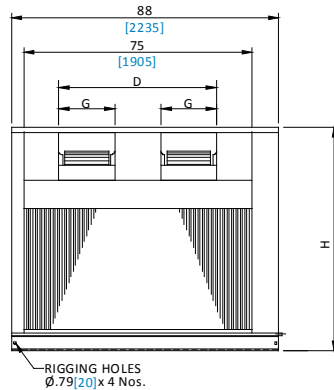
PACV Models: 52026 S to 52038 S & 62033 S to 62046 S

MODEL PACV-	DIMENSIONS ARE IN INCHES [mm]								
	H	L	A	F	H1	J	G	D	I
52026 S 62033 S	72.87 [1851]	116 [2946]	40 [1016]	40 [1016]	60.63 [1540]	15.91 [404]	18.54 [471]	52.28 [1328]	8.54 [217]
52030 S 62036 S	80.87 [2054]	116 [2946]	40 [1016]	48 [1219]	60.63 [1540]	15.91 [404]	18.54 [471]	52.28 [1328]	8.54 [217]
52032 S 62037 S	80.87 [2054]	116 [2946]	40 [1016]	48 [1219]	60.63 [1540]	15.91 [404]	18.54 [471]	52.28 [1328]	8.54 [217]
* 52038 S * 62046 S	93.99 [2387]	119 [3023]	43 [1092]	56 [1422]	77.63 [1972]	18.82 [478]	21.93 [557]	61.85 [1571]	10.75 [273]

* MODEL WITH TANDEM COMPRESSORS

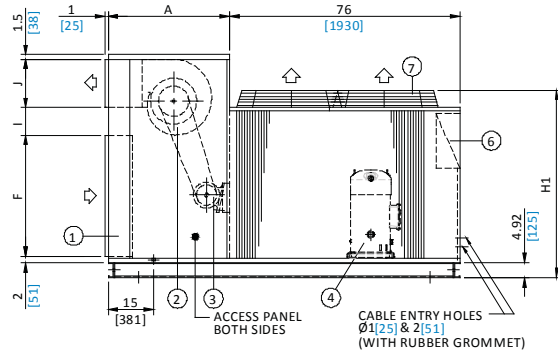
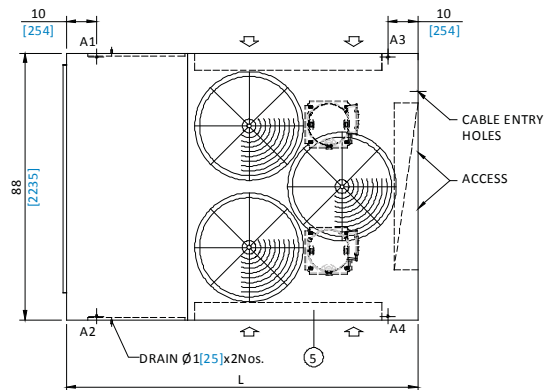
FROM THE MODELS 52038S/62046S, USING TANDEM COMPRESSORS

CERTIFIED DRAWINGS ARE AVAILABLE ON REQUEST



LEGEND

- ⑦ - CONDENSER FAN
- ⑥ - CONTROL PANEL
- ⑤ - CONDENSER COIL
- ④ - COMPRESSOR
- ③ - FAN MOTOR
- ② - EVAPORATOR FAN
- ① - EVAPORATOR COIL

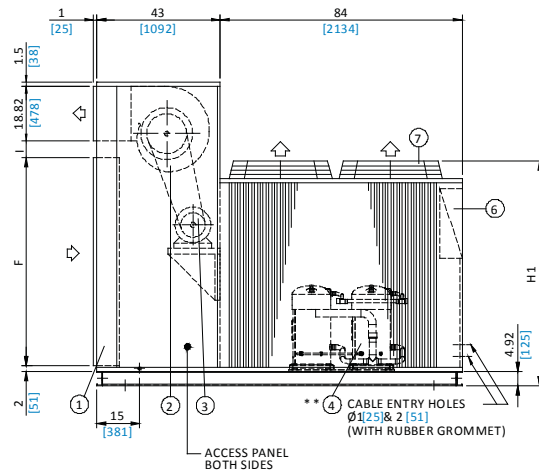
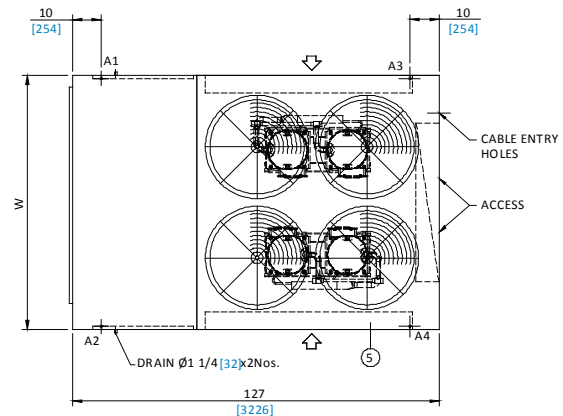
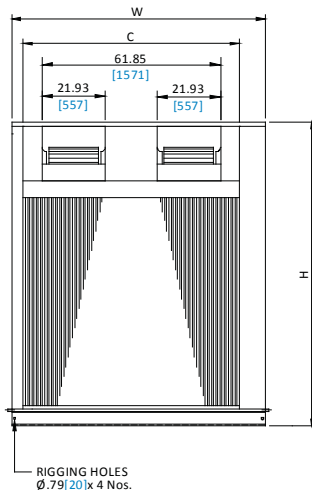


PACV Models: 52045 S to 52055 S & 62055 S to 62066 S

CERTIFIED DRAWINGS ARE AVAILABLE ON REQUEST

MODEL PACV-	DIMENSIONS ARE IN INCHES [mm]					
	H	W	H1	C	F	I
52045 S 62055 S	99.24 [2521]	88 [2235]	77.63 [1972]	75 [1905]	66 [1676]	6 [152]
52050 S 62060 S	103.24 [2622]	88 [2235]	85.63 [2175]	75 [1905]	72 [1829]	4 [102]
52055 S 62066 S	103.24 [2622]	92 [2337]	85.63 [2175]	80 [2032]	72 [1829]	4 [102]

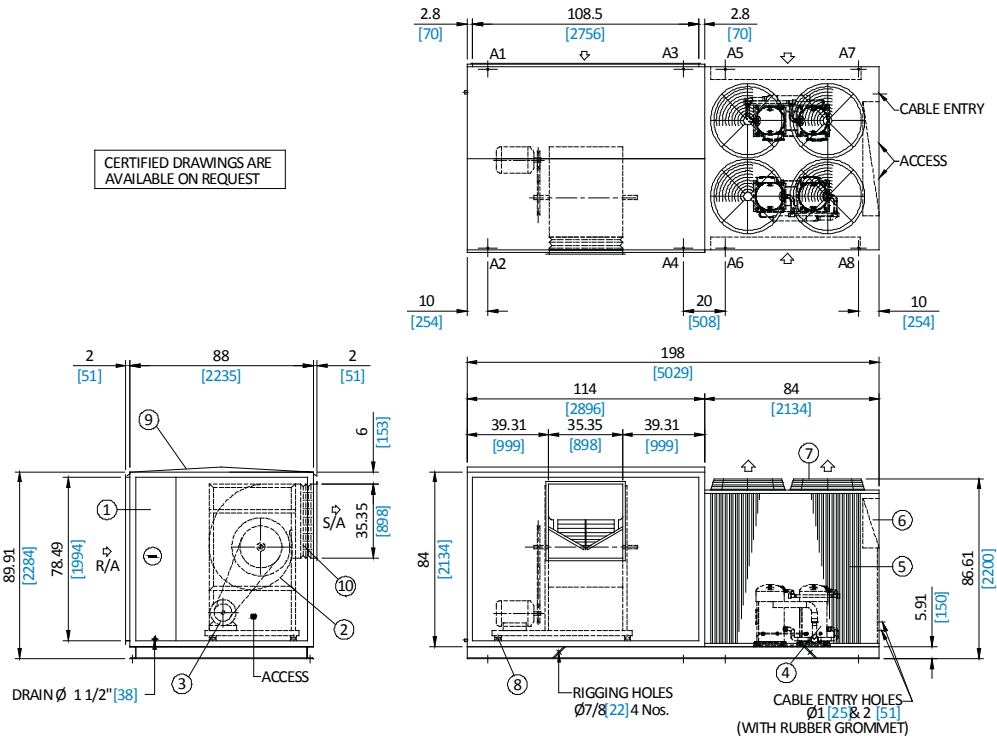
** TANDEM COMPRESSOR



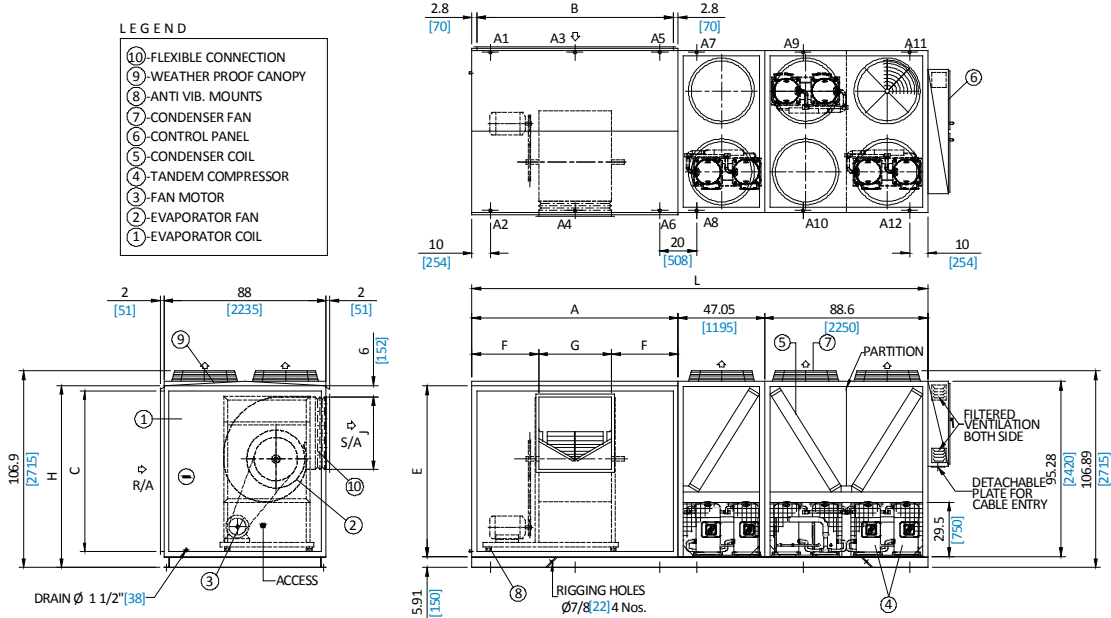
SKM Packaged Air Conditioning Units PAC-V Series - R134a

Dimensional Data

PACV Models: 52065 S & 62076 S



PACV Models: 53070 S to 53095 S & 630855 S to 63110 S



MODEL PACV-	DIMENSIONS ARE IN INCHES [MM]								
	L	A	B	E	F	H	J	G	C
53070 S 63085 S	249.6 [6341]	114 [2896]	108.5 [2756]	93 [2362]	37.17 [944]	98.94 [2513]	39.65 [1007]	39.65 [1007]	87.5 [2222]
53075 S 63090 S	249.6 [6341]	114 [2896]	108.5 [2756]	93 [2362]	37.17 [944]	98.94 [2513]	39.65 [1007]	39.65 [1007]	87.5 [2222]
53080 S 63095 S	249.6 [6341]	114 [2896]	108.5 [2756]	102 [2591]	37.17 [944]	107.91 [2741]	39.65 [1007]	39.65 [1007]	96.5 [2451]
53085 S 63100 S	253.6 [6441]	118 [2997]	112.5 [2857]	102 [2591]	36.76 [934]	107.91 [2741]	44.49 [1130]	44.49 [1130]	96.5 [2451]
53090 S 63105 S	259.6 [6594]	124 [3150]	118.5 [3010]	102 [2591]	39.76 [1010]	107.91 [2741]	44.49 [1130]	44.49 [1130]	96.5 [2451]
53095 S 63110 S	266.6 [6772]	131 [3327]	125.5 [3188]	102 [2591]	43.26 [1099]	107.91 [2741]	44.49 [1130]	44.49 [1130]	96.5 [2451]



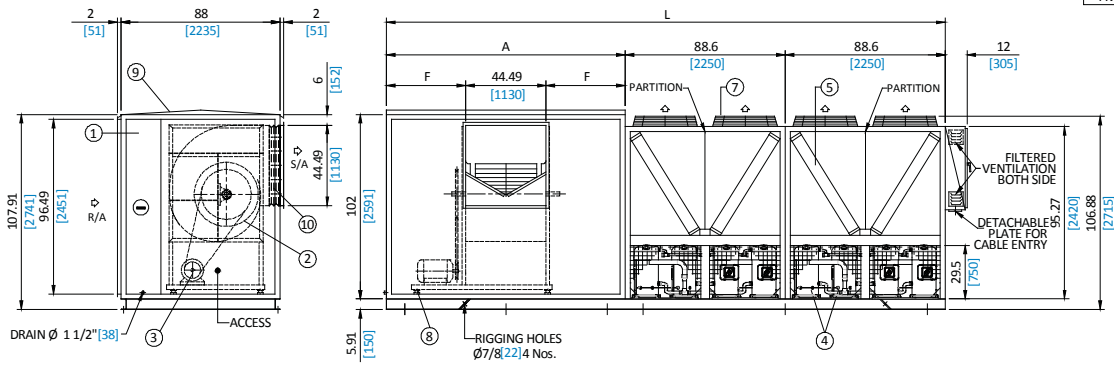
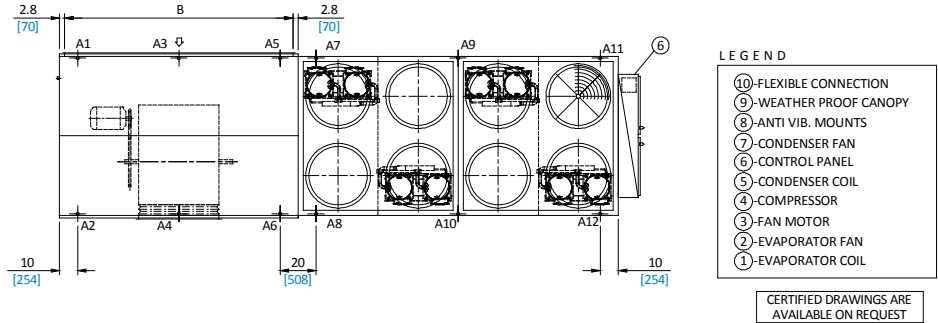
You name it....We cool it

SKM Packaged Air Conditioning Units PAC-V Series - R134a

Dimensional Data

PACV Models: 54100 S to 54125 S & 64120 S to 64145 S

MODEL PACV-	DIMENSIONS ARE IN INCHES[mm]			
	L	A	B	F
54100 S 64120 S	311.2 [7904]	134 [3404]	128.5 [3264]	44.76 [1137]
54110 S 64130 S	315.2 [8006]	138 [3505]	132.5 [3365]	46.76 [1188]
54115 S 64136 S	321.2 [8158]	144 [3658]	138.5 [3518]	49.76 [1264]
54125 S 64145 S	329.2 [8362]	152 [3861]	146.5 [3721]	53.76 [1365]



LOADING POINTS - 50Hz

PACV-	UNIT	LOADING POINTS				TOTAL WEIGHT
		A1	A2	A3	A4	
51008-S	lb	214	215	309	311	1049
	Kg	97	97	140	141	476
51010-S	lb	242	243	334	336	1154
	Kg	110	110	152	152	524
51014-S	lb	462	461	578	550	2050
	Kg	209	209	262	249	930
52015-S	lb	503	493	607	605	2208
	Kg	228	224	275	274	1001
51017-S	lb	494	493	608	580	2175
	Kg	224	223	276	263	987
52017-S	lb	513	504	622	615	2254
	Kg	233	229	282	279	1023
52020-S	lb	549	536	657	654	2395
	Kg	249	243	298	297	1086
52023-S	lb	576	553	732	693	2553
	Kg	261	251	332	314	1158
52026-S	lb	699	689	873	871	3133
	Kg	317	312	396	395	1421
52030-S	lb	736	722	889	882	3228
	Kg	334	328	403	400	1464
52032-S	lb	737	725	894	891	3248
	Kg	334	329	405	404	1473
52038-S	lb	822	807	1011	1008	3648
	Kg	373	366	459	457	1655
52045-S	lb	969	934	1283	1207	4392
	Kg	439	424	582	547	1992

LOADING POINTS - 60Hz

MODEL PACV-	UNIT	Load at Each Point lbs. [Kg.]				TOTAL WEIGHT
		A1	A2	A3	A4	
61009-S	lb	221	221	312	313	1067
	Kg	100	100	141	142	484
61012-S	lb	256	256	338	340	1190
	Kg	116	116	153	154	540
61018-S	lb	472	472	581	553	2078
	Kg	214	214	263	251	942
62018-S	lb	513	503	610	608	2235
	Kg	233	228	277	276	1014
61020-S	lb	505	503	612	584	2204
	Kg	229	228	278	265	1000
62020-S	lb	523	515	625	618	2282
	Kg	237	233	284	280	1035
62024-S	lb	563	551	663	661	2438
	Kg	255	250	301	300	1106
62028-S	lb	591	568	756	718	2634
	Kg	268	258	343	326	1195
62033-S	lb	720	710	883	881	3195
	Kg	327	322	401	400	1449
62036-S	lb	760	747	899	891	3297
	Kg	345	339	408	404	1495
62037-S	lb	791	776	909	906	3383
	Kg	359	352	412	411	1534
62046-S	lb	850	835	1021	1018	3723
	Kg	386	379	463	462	1689
62055-S	lb	1088	1054	1350	1274	4767
	Kg	494	478	612	578	2162

SKM Packaged Air Conditioning Units PAC-V Series - R134a

LOADING POINTS - 50Hz

PACV-	UNIT	LOADING POINTS												TOTAL WEIGHT
		A1	A2	A3	A4	A5	A6	A7	A8	A9	A10	A11	A12	
52050-S	lb	1004	987	1360	1357	-	-	-	-	-	-	-	-	4708
	Kg	456	448	617	615	-	-	-	-	-	-	-	-	2135
52055-S	lb	1153	1134	1391	1378	-	-	-	-	-	-	-	-	5056
	Kg	523	514	631	625	-	-	-	-	-	-	-	-	2294
52065-S	lb	960	1026	566	633	983	983	1284	1284	-	-	-	-	7720
	Kg	435	465	257	287	446	446	583	583	-	-	-	-	3502
53070-S	lb	683	467	777	661	604	397	600	824	1046	876	793	1030	8758
	Kg	310	212	353	300	274	180	272	374	475	397	360	467	3973
53075-S	lb	687	471	781	665	607	401	626	894	1148	944	821	1105	9149
	Kg	312	213	354	302	275	182	284	406	521	428	372	501	4150
53080-S	lb	719	478	813	673	640	408	634	902	1156	952	828	1112	9316
	Kg	326	217	369	305	290	185	288	409	524	432	376	505	4226
53085-S	lb	752	503	882	755	673	435	676	944	1210	1009	879	1176	9895
	Kg	341	228	400	343	305	197	307	428	549	458	399	533	4488
53090-S	lb	770	509	908	766	691	436	682	950	1241	1023	885	1182	10045
	Kg	349	231	412	347	313	198	310	431	563	464	401	536	4556
53095-S	lb	808	529	937	777	716	444	693	967	1249	1033	893	1190	10236
	Kg	366	240	425	353	325	201	314	439	567	469	405	540	4643
54100-S	lb	954	665	1119	943	865	582	917	1298	1505	1513	1097	1339	12796
	Kg	433	302	507	428	392	264	416	589	683	686	497	607	5804
54110-S	lb	974	675	1139	953	885	591	956	1336	1584	1587	1144	1399	13222
	Kg	442	306	516	432	401	268	433	606	719	720	519	635	5998
54115-S	lb	993	680	1158	957	904	596	962	1345	1603	1604	1151	1404	13357
	Kg	451	308	525	434	410	270	436	610	727	728	522	637	6059
54125-S	lb	1028	694	1189	968	929	602	976	1375	1613	1622	1157	1410	13564
	Kg	466	315	539	439	422	273	443	624	732	736	525	640	6153

LOADING POINTS - 60Hz

MODEL PACV-	UNIT	Load at Each Point lbs. [Kg.]												TOTAL WEIGHT
		A1	A2	A3	A4	A5	A6	A7	A8	A9	A10	A11	A12	
62060-S	lb	1152	1133	1501	1497	-	-	-	-	-	-	-	-	5282
	Kg	522	514	681	679	-	-	-	-	-	-	-	-	2396
62066-S	lb	1226	1205	1526	1513	-	-	-	-	-	-	-	-	5470
	Kg	556	546	692	686	-	-	-	-	-	-	-	-	2481
62076-S	lb	1019	1086	568	634	995	995	1365	1365	-	-	-	-	8027
	Kg	462	492	258	288	451	451	619	619	-	-	-	-	3641
63085-S	lb	729	468	822	662	649	398	609	832	1059	889	804	1040	8963
	Kg	331	212	373	300	294	181	276	378	481	403	365	472	4066
63090-S	lb	732	472	826	666	652	402	635	903	1161	957	832	1116	9354
	Kg	332	214	375	302	296	182	288	410	527	434	377	506	4243
63095-S	lb	770	480	863	674	690	410	643	911	1169	965	840	1124	9538
	Kg	349	218	392	306	313	186	292	413	530	438	381	510	4327
63100-S	lb	804	505	934	757	725	436	685	953	1224	1022	890	1187	10122
	Kg	365	229	424	343	329	198	311	432	555	464	404	538	4592
63105-S	lb	826	511	964	767	746	438	691	959	1254	1036	896	1193	10282
	Kg	374	232	437	348	339	199	314	435	569	470	406	541	4664
63110-S	lb	867	530	996	779	775	445	702	976	1263	1047	904	1201	10485
	Kg	393	241	452	353	351	202	318	443	573	475	410	545	4756
64120-S	lb	1014	667	1179	944	925	583	928	1309	1526	1534	1108	1350	13069
	Kg	460	302	535	428	420	264	421	594	692	696	503	613	5928
64130-S	lb	1036	677	1201	954	947	593	971	1358	1605	1608	1152	1400	13502
	Kg	470	307	545	433	429	269	440	616	728	729	523	635	6124
64136-S	lb	1058	681	1223	959	969	598	973	1356	1624	1625	1162	1416	13645
	Kg	480	309	555	435	440	271	441	615	737	737	527	642	6189
64145-S	lb	1098	696	1259	970	999	604	988	1386	1634	1643	1168	1422	13867
	Kg	498	316	571	440	453	274	448	629	741	745	530	645	6290



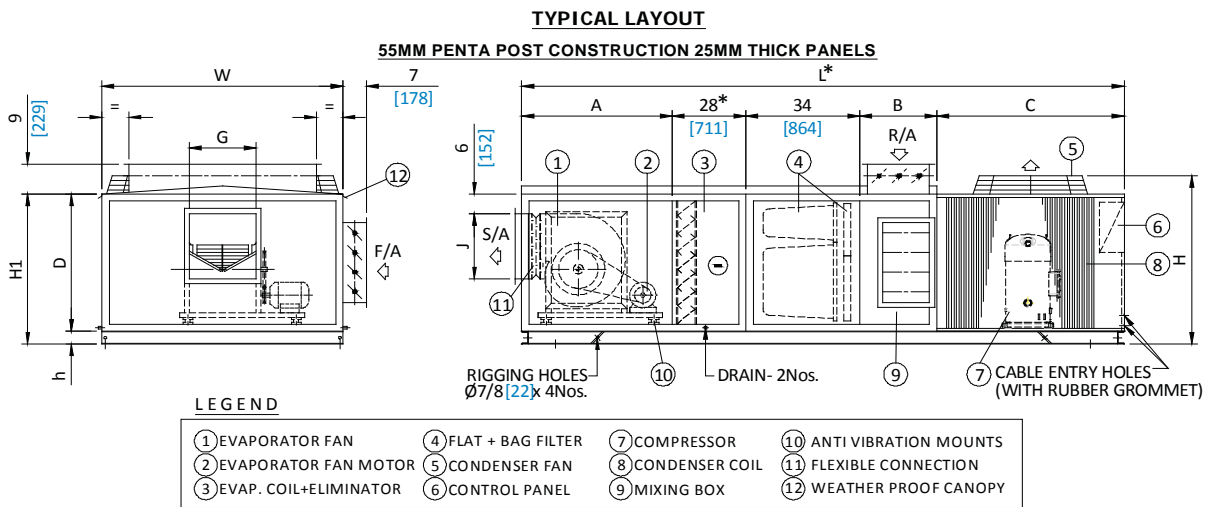
SKM Packaged Air Conditioning Units PAC-V Series - R134a

Optional Modular Construction

PACV Models: 51008 S/61009 S to 52055 S & 62066 S

As an option, listed models can be produced as modular sections as per details given below.

- Mixing Box based on 75% R.A. and 25% F.A.
- Evaporator Fan is Forward Curved, type.
- 22" (559 mm) thick bag filter.
- 2" (50 mm) thick flat filter.
- Base frame size could be changed based on the components and application. Panel thickness is 1" (25 mm).



- * IF ELIMINATOR IS NOT REQUIRED, REDUCE THE SECTION LENGTH BY 6 INCH
- ** FROM THE MODELS 51028D/61033D TO 52055D/62064D DRAIN CONNECTION (FTP TYPE) TO BE INTEGRATED INSIDE THE UNIT.
- *** FROM 52038 S/62046 S TO 52055 S/62066 S USING TANDEM COMPRESSORS

MODEL PACV -	ALL DIMENSIONS ARE IN INCHES[MM]												CABLE ENTRY		
	L	W	H	H1	D	h	A	B	C	J	K	DRAIN Ø	CONTROL / POWER	EVAP.FAN	
51008 S 61009 S	159 [4039]	56 [1422]		39.94 [1014]	36 [914]			18 [457]							
51010 S 61012 S	165 [4191]	58 [1473]					34 [867]		45 [1143]	15.91 [404]	15.91 [404]		Ø3/4[19] / Ø1[25]	ADH 315R	
51014 S 61018 S		72 [1829]	51.65 [1312]												
52015 S 62018 S				45.94 [1167]	42 [1067]	3.94 [100]		24 [610]		19.96 [507]	19.96 [507]			ADH 400R	
51017 S 61020 S	187 [4750]	76 [1930]					45 [1143]		56 [1422]				Ø1[25] / Ø1.5[38]		
52017 S 62020 S												1 [25]			
52020 S 62024 S		84 [2134]	59.65 [1515]							22.40 [569]	22.40 [569]			ADH 450R	
52023 S 61028 S	195 [4953]			51.94 [1319]	48 [1219]				58 [1473]						
52026 S 62033 S				56.92 [1446]	52 [1321]					25.12 [638]	25.12 [638]			ADH 500R	
52030 S 62036 S	220 [5580]		60.63 [1540]				52 [1321]	30 [762]							
52032 S 62037 S				64.92 [1649]	60 [1524]				76 [1930]	28.15 [715]	28.15 [715]			ADH 560R	
52038 S 62046 S	232 [5893]	88 [2235]		72.92 [1852]	68 [1727]	4.92 [125]		36 [914]							
52045 S 62055 S	246 [6248]		77.63 [1972]	82.92 [2106]	78 [1981]		58 [1473]			31.54 [801]	31.54 [801]		Ø1[25] / Ø2[51]	ADH 630R	
52050 S 62060 S								42 [1067]	84 [2134]						
52055 S 62066 S	258 [6553]	92 [2337]	85.63 [2175]	88.92 [2259]	84 [2134]		70 [1778]			35.35 [898]	35.35 [898]	1 1/4 [32]		ADH 710R	

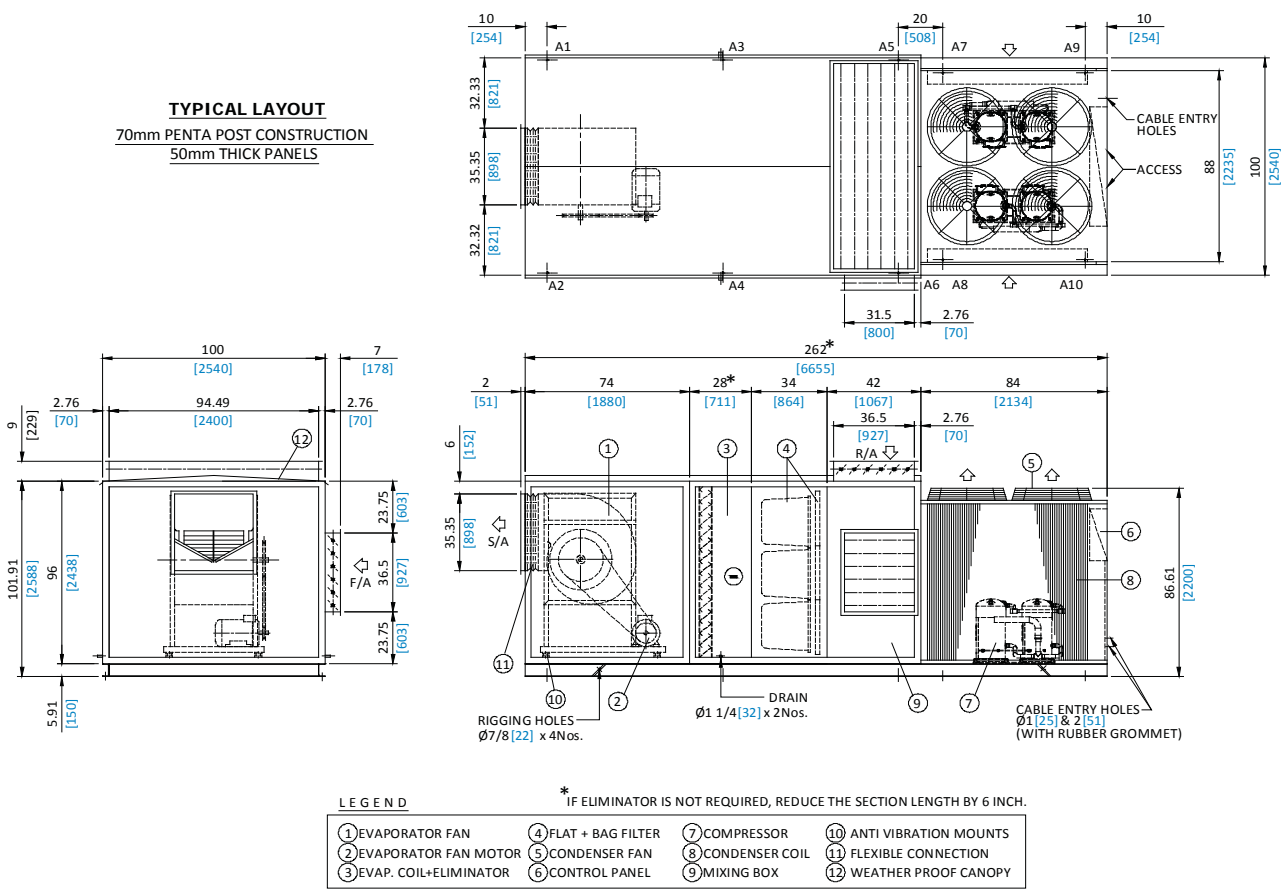
SKM Packaged Air Conditioning Units PAC-V Series - R134a

Optional Modular Construction

PACV Models: 52065 S/62076 S

As an option, listed models can be produced as modular sections as per details given below.

- Mixing Box based on 75% R.A. and 25% F.A.
- Evaporator Fan is Forward Curved, type.
- 22" (559 mm) thick bag filter.
- 2" (50 mm) thick flat filter.
- Base frame size could be changed based on the components and application. Panel thickness is 1" (25 mm).



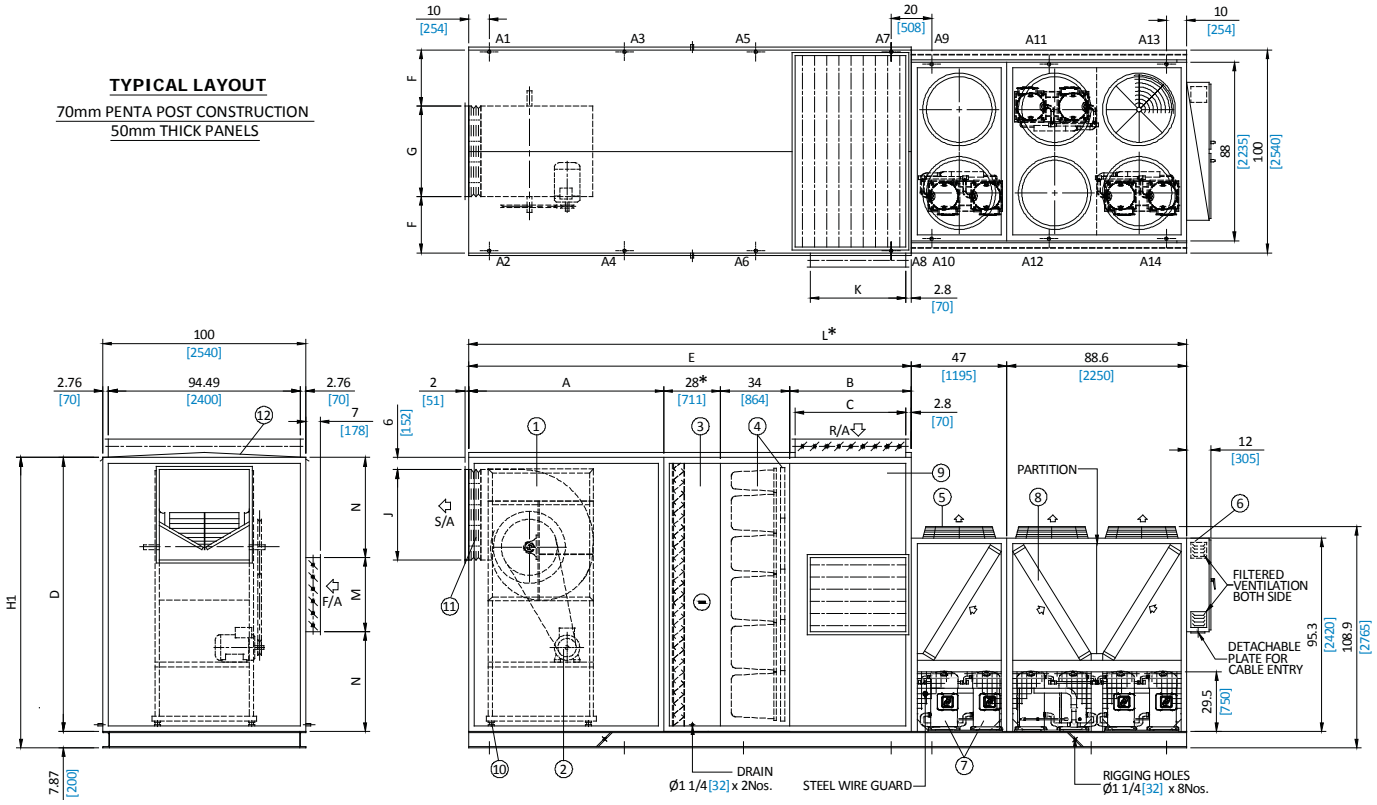
SKM Packaged Air Conditioning Units PAC-V Series - R134a

Optional Modular Construction

PACV Models: 53070 S/63085 S to 53095 S & 63110 S

As an option, listed models can be produced as modular sections as per details given below.

- Mixing Box based on 75% R.A. and 25% F.A.
- Evaporator Fan is Forward Curved, type.
- 22" (559 mm) thick bag filter.
- 2" (50 mm) thick flat filter.
- Base frame size could be changed based on the components and application. Panel thickness is 2" (50 mm).



LEGEND

- | | | |
|-------------------------|------------------|-------------------------|
| ① EVAPORATOR FAN | ⑤ CONDENSER FAN | ⑨ MIXING BOX |
| ② EVAPORATOR FAN MOTOR | ⑥ CONTROL PANEL | ⑩ ANTI VIBRATION MOUNTS |
| ③ EVAP. COIL+ELIMINATOR | ⑦ COMPRESSOR | ⑪ FLEXIBLE CONNECTION |
| ④ FLAT + BAG FILTER | ⑧ CONDENSER COIL | ⑫ WEATHER PROOF CANOPY |

MODEL PACV -	DIMENSIONS													EVAP.FAN
	H1	D	L	A	B	C	E	F	G	J	K	M	N	
53070 S 63085 S	115.87 [2943]	108 [2743]	329.6 [8373]	84 [2134]	48 [1219]	42.5 [1080]	194 [4928]	30.18 [767]	39.65 [1007]	39.65 [1007]	31.5 [800]	42.5 [1080]	32.75 [832]	ADH-800K
53075 S 63090 S	115.87 [2943]	108 [2743]	329.6 [8373]	84 [2134]	48 [1219]	42.5 [1080]	194 [4928]	30.18 [767]	39.65 [1007]	39.65 [1007]	31.5 [800]	42.5 [1080]	32.75 [832]	
53080 S 63095 S	124.87 [3172]	117 [2972]	335.6 [8525]	84 [2134]	54 [1372]	48.5 [1232]	200 [5080]	30.18 [767]	39.65 [1007]	39.65 [1007]	36 [914]	42.5 [1080]	37.25 [946]	
53085 S 63100 S	127.87 [3248]	120 [3048]	347.6 [8830]	96 [2438]	54 [1372]	48.5 [1232]	212 [5385]	27.76 [705]	44.49 [1130]	44.49 [1130]	36 [914]	42.5 [1080]	37.75 [984]	
53090 S 63105 S	133.87 [3400]	126 [3200]	353.6 [8982]	96 [2438]	60 [1524]	54.5 [1384]	218 [5537]	27.76 [705]	44.49 [1130]	44.49 [1130]	47 [1194]	36.5 [927]	44.75 [1137]	ADH-900K
53095 S 63110 S	142.87 [3629]	135 [3429]	353.6 [8982]	96 [2438]	60 [1524]	54.5 [1384]	218 [5537]	27.76 [705]	44.49 [1130]	44.49 [1130]	47 [1194]	36.5 [927]	49.25 [1251]	

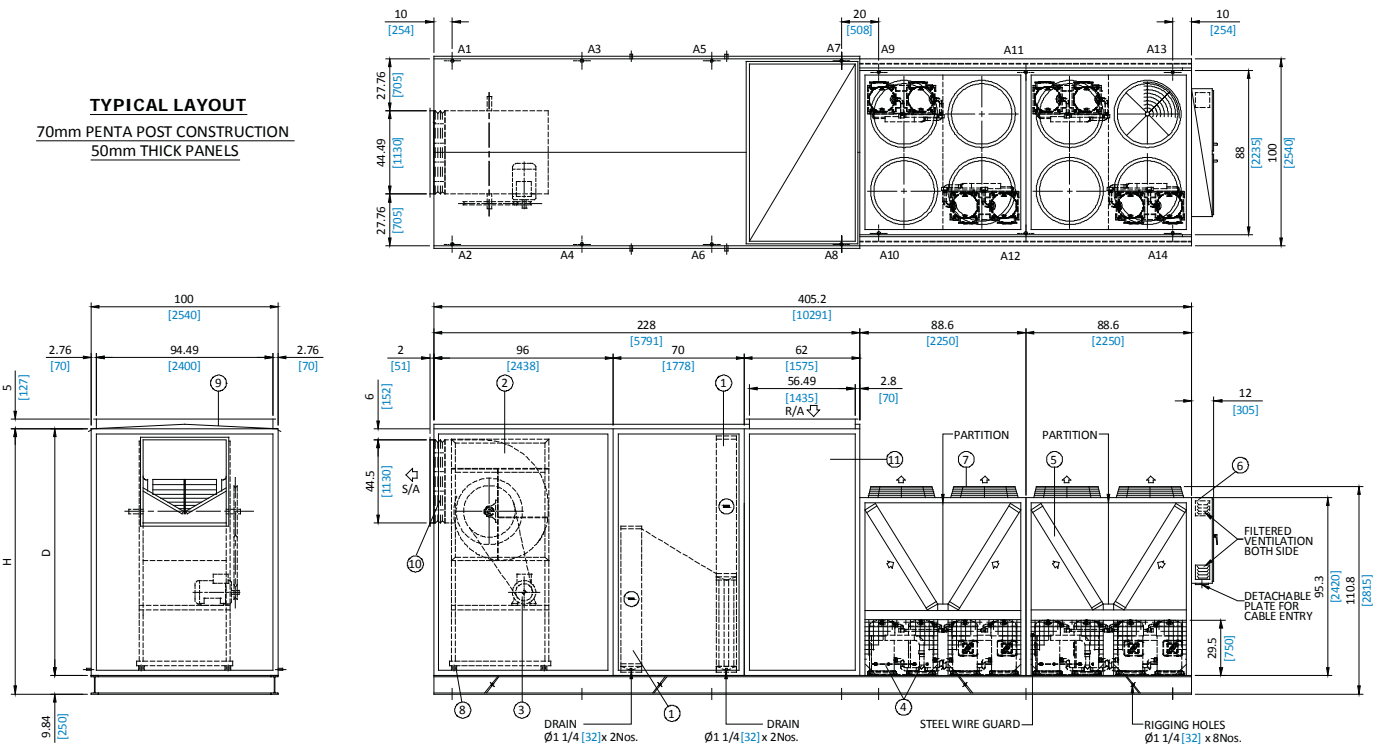
SKM Packaged Air Conditioning Units PAC-V Series - R134a

Optional Overlapped evaporator coil design

PACV Models: 54100 S/64120 S to 54125 S & 64145 S

As an option, listed models can be produced as overlapped evap. coils design with front discharge fan as per details given below.

- 100% Return air box.
- Evaporator Fan Forward Curved, type.
- Base frame size could be changed based on the components and application. Panel thickness is 2" (50 mm)
- Total length of the unit will be depending on the required sections, (e.g: filters, mixing box, eliminators, electric heaters etc...)



LEGEND

- | | | | | | |
|--------------------|------------------------|------------------|-------------------------|------------------------|------------------|
| ① EVAPORATOR COILS | ③ EVAPORATOR FAN MOTOR | ⑤ CONDENSER COIL | ⑦ CONDENSER FAN | ⑨ WEATHER PROOF CANOPY | ⑪ RETURN AIR BOX |
| ② EVAPORATOR FAN | ④ COMPRESSOR | ⑥ CONTROL PANEL | ⑧ ANTI VIBRATION MOUNTS | ⑩ FLEXIBLE CONNECTION | |

DIMENSIONS	MODELS PACV-			
	54100S/64120S	54110S/64130S	54115S/64136S	54125S/64145S
D	117 [2972]	119.5 [3035]	124.5 [3162]	132 [3353]
H	126.84 [3222]	129.34 [3285]	134.34 [3412]	141.84 [3603]

ALL DIMENSIONS ARE IN INCHES[mm]

SKM Packaged Air Conditioning Units PAC-V Series - R134a

Location and Space Requirements

Due to the vertical air flow discharge condenser design, it is recommended that certain precautions are to be taken before installation. There should be no obstruction on the air flow.

Orient the unit so that prevailing winds blow parallel to the unit length thus minimizing the effects on condensing pressure. If it is not practical to orient the unit in this manner, a wind deflecting shield should be considered.

It is also necessary to provide adequate clearance on all sides of the unit for service access and satisfactory performance. This will prevent excessive condensing temperatures and enhance system performance and operating economy.

A flat concrete foundation or floor which can support the weight of the equipment must be provided as the unit must be level for proper operation and functioning of controls.

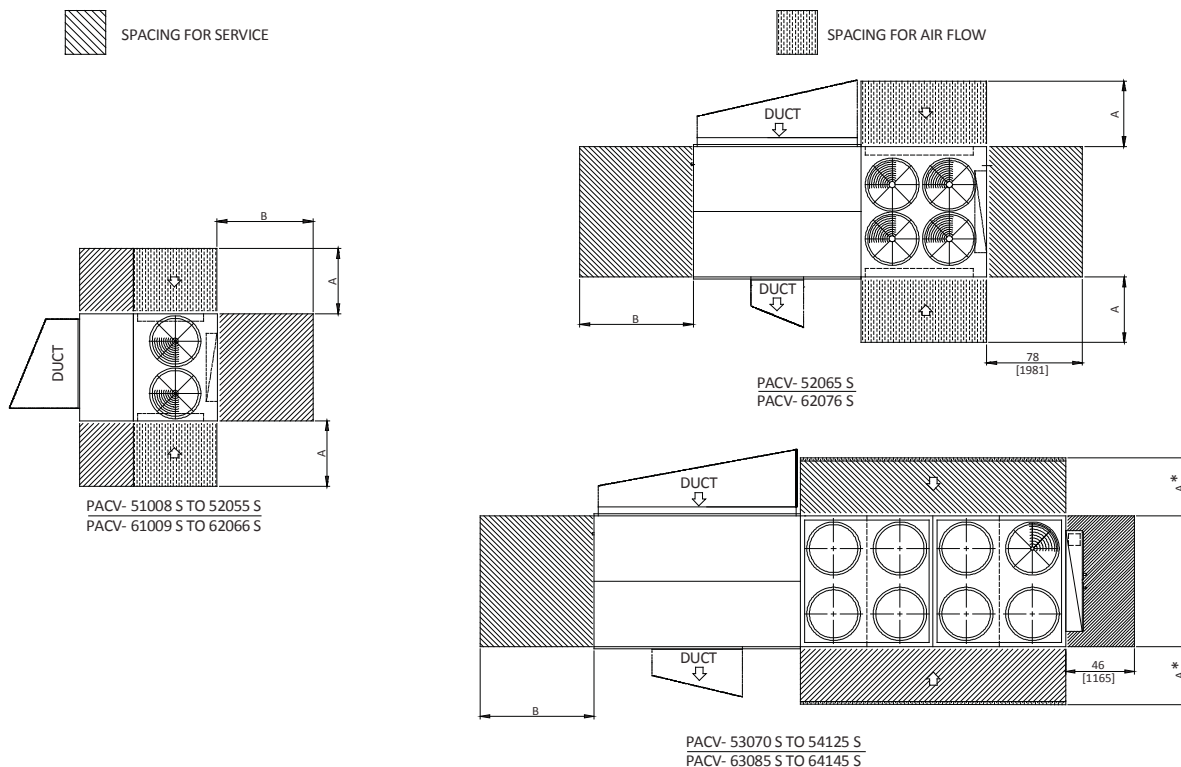
Under certain critical conditions it is recommended that vibration isolators of rubber-in-shear or spring type be installed under the base.

The isolators must be designed for the operating weight of the unit. For operating load points refer to Loading Points Data (page No.32&33). Correct selection of types of isolators depends upon application and structure.

PACV-S		A	B	C	
51008-S	61009-S	40	42	50	
51010-S	61012-S				
51014-S	61018-S	66	50	66	
52015-S	62018-S	72		72	
51017-S	61020-S	72		72	
52017-S	62020-S	72		72	
52020-S	62024-S	78	56	78	
52023-S	62028-S	78		78	
52026-S	62033-S	82	66	82	
52030-S	62036-S			82	82
52032-S	62037-S			82	82
52038-S	62046-S		82	96	
52045-S	62055-S		82	108	
52050-S	62060-S		82	108	
52055-S	62066-S	86	104	-	
52065-S	62076-S	72			
53070-S	63085-S	84			104
53075-S	63090-S				104
53080-S	63095-S				104
53085-S	63100-S				108
53090-S	63105-S				114
53095-S	63110-S				122
54100-S	64120-S				124
54110-S	64130-S				128
54115-S	64136-S				134
54125-S	64145-S				142

Table 16

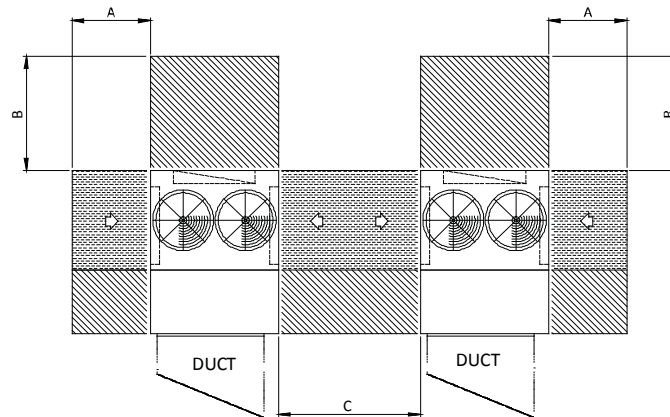
Single Unit Installation



* SPACING FOR BOTH AIR FLOW AND SERVICE

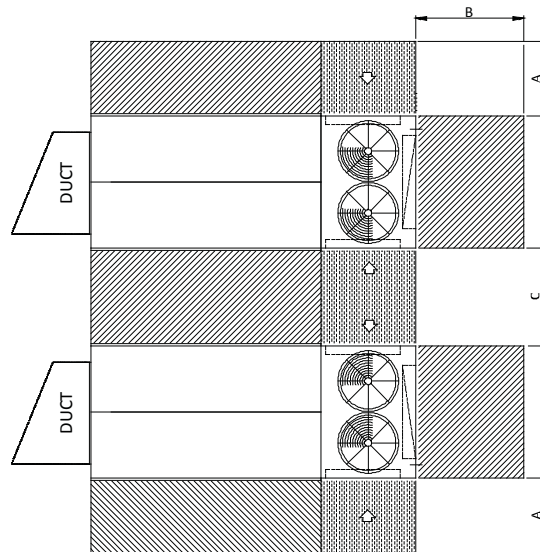
SKM Packaged Air Conditioning Units PAC-V Series - R134a

Multiple Units Installation



PACV- 51008 S TO 52055 S
PACV- 61009 S TO 62066 S

Multiple Units Installation(Modular Construction)



PACV- 51008 S TO 52055 S
PACV- 61009 S TO 62066 S

SKM Packaged Air Conditioning Units PAC-V Series - R134a

GUIDE SPECIFICATIONS

GENERAL FEATURES

Packaged air conditioners shall be composed of compressor(s), condenser coil(s), evaporator coil, expansion valve(s), connecting piping, all necessary liquid line accessories and safety controls.

Unit shall be factory assembled, internally wired, fully refrigerant charged with R-134a and thoroughly tested before delivery. Units should be capable to operate from 50°F (10°C) to 125°F (52°C) ambient temperature, and shall be rated in accordance with ARI 340-360 standards.

CONDENSER COIL(S)

Coil shall be air cooled with integral sub-cooling circuit, constructed of seamless copper tubes 3/8" OD mechanically bonded to wavy Aluminium (Copper) fins with maximum 14 FPI (1.8mm) spacing. Coil shall be tested against leakage by pressurizing air at 450 psig (3100 kPa) in coil, under water, cleaned and dehydrated at the factory.

COMPRESSOR(S)

Compressor shall be hermetic scroll, refrigerant gas cooled furnished with internal overload protection device, internal pressure relief valve, crankcase heater, and shall be mounted on rubber isolators. These compressors conform to internationally recognized standards like, CE & ENISO.

CONDENSER FAN(S) & MOTOR(S)

The machine shall be furnished with direct driven propeller type discharging air upward condenser fans. Fans shall be constructed of corrosion resistant blades such as heavy gauge aluminum. The fan and drive shall be held in proper alignment. Fan assemblies shall be provided with heavy gauge, rust resistant steel wire fan guard. All condenser fans shall be individually, statically, and dynamically balanced for vibration free operation. Motors shall be Totally Enclosed Air Over (TEAO), 6 poles, class F insulation, minimum IP55 protection and factory wired to unit control panel.

EVAPORATOR COIL

Evaporator coil shall be constructed of seamless copper tubes mechanically bonded to aluminum (copper) cross-wave fins with maximum 12FPI (2.1mm) spacing. Coil consists of headers of seamless copper tubing, thermostatic expansion valve(s) & multi-circuited distributor(s). These coils shall be tested against leakage by air pressure of 300 psig (2068 kPa) under water, cleaned & dehydrated at the factory. Coil shall conform to AHRI-410.

EVAPORATOR FAN & DRIVE

Evaporator fan shall be forward curved, double inlet double width (DIDW) centrifugal type, statically and dynamically balanced, mounted on single heavy duty shaft with permanently lubricated bearings and belt driven by "V" belts with an adjustable variable pitch motor pulley up to 15 kW. Above 15 kW fixed pulleys shall be standard. Variable pitch pulleys shall be provided above 15 kW motors, if so specified.

Motor shall be totally enclosed fan cooled (TEFC) 4 poles, class F insulated, minimum IP55 protected and factory wired to unit control panel.

REFRIGERANT PIPING

The refrigerant circuit piping shall be fabricated from ACR grade copper piping, with 1, 2, 3, or 4 refrigeration circuits, each liquid line shall include shut off valve, filter drier, sight glass, solenoid valve and thermostatic expansion valve.

Suction line shall be insulated with 1/2" (12mm) wall thickness enclosed cell pipe insulation with maximum K factor 0.28 Btu.in /ft² .h.°F. (0.040 W/mK).

CASING

Unit casing shall be made of zinc coated galvanized steel sheets conforming to JIS-G3302 and ASTM A653 which shall be phosphatized and then electrostatically dry powder coated of approx.60 microns to provide an extremely tough, scratch resistance, excellent anti-corrosive protection that can pass 1000 hrs in 5% salt spray testing at 95°F (35°C) and 95% relative humidity as per ASTM B117.

Evaporator section shall be sealed with vinyl gaskets and completely insulated faced with black glass tissue (BGT) heavy density, fire retardant, 32 Kg/m³ density having Max. K factor 0.23 Btu.in /ft² .h.°F (0.033 W/mK) and permanent odorless fibre glass insulation of minimum 1" (25mm) thickness for models up to PACV-52055S & 62066S and 2" (50mm) thickness for models PACV-52065S & 62076S onwards. Unit casing shall be provided with access panels for easy service and maintenance of all units parts.

CONTROL PANEL

The unit mounted IP54 control panel enclosure shall comprises all starting, operating, and safety controls. Control panels shall be with either dead front panel cover screwed onto the enclosure or with external panels with hinged door and key fastener provided for access and security.

All wiring shall be sized as per NEC regulations. Wiring shall be fully ferruled enabling ease of proper identification. The control panel shall be factory wired for 220-240V/1PH/50 & 60Hz control power supply. A Micro Automation logic controller shall be built in to control the unit, as standard. **Please refer page no.5 for more details.**

FILTERS

Units shall be supplied with a range of filter sections with flat filter or vee filter 1" or 2" thick, with 54% or 72% dust arrestance, respectively, in accordance with ASHRAE 52.1, if so specified.

A bag filter section to house 22", 30", or 36" deep bag filters having efficiency as desired shall be provided, if so specified.

High efficiency pleat filter shall be provided as an alternative to bag filter, if so specified.

For 100%, Fresh Air application, a sand trap louver shall be provided, if so specified.