

# Split Air Conditioners ACUM + CADX Series

Range 4 TR to 24 TR  
( 14.1 kW to 84.5 kW )



Bulletin # 010/2010

Supersedes Bulletin # 010/2007



R-22



# SKM Split Air Conditioners ACUM + CADX Series - R22

## Contents

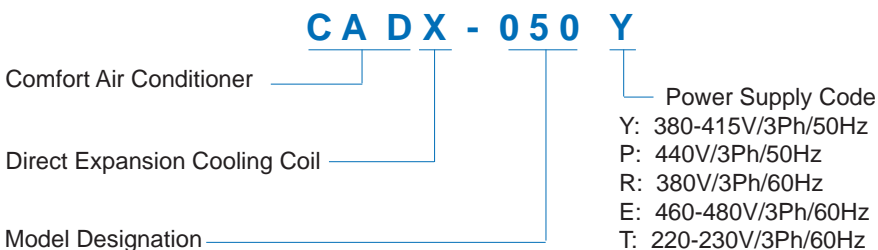
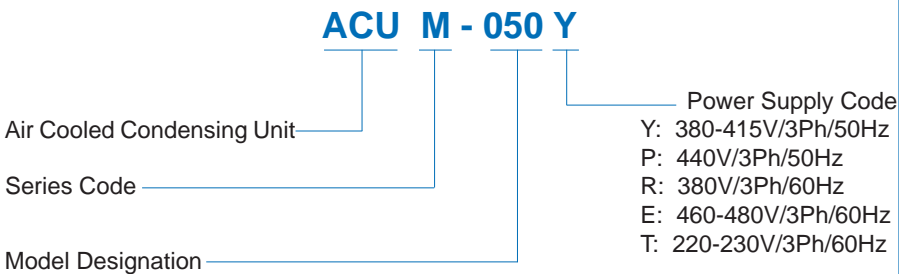
Introduction .....	2	Fan Performance.....	17
Legend.....	2	Typical Wiring Diagram .....	15
Nomenclature .....	2	Electrical Data .....	14
General Features .....	3	Dimensional Data .....	18
Component Features .....	3	Guide Specifications.....	23
Optional Features .....	4		
Specifications .....	5		
Capacity Ratings .....	7		

## Legend

The following legends are used throughout this manual:

AFR .....	Air Flow Rate	MBH.....	BTUH X 1000
BPF.....	By-pass Factor	Pa .....	Pascal
CFM.....	Cubic feet per minute	Ph .....	Phase
Hz .....	Hertz	PI .....	Power Input (for compressor)
in.wg .....	inch water gauge	rpm.....	Rotations per minute
KW .....	Kilowatts	TR.....	Tons of refrigeration
kg.....	Kilogram		
lbs.....	Pounds		

## Nomenclature



## Introduction

**SKM Air Cooled Split Air-Conditioners consist of ceiling suspended indoor Fan Coil Unit - CADX and floor mounted outdoor Air Cooled Condensing Unit - ACUM.**

**SKM Split units are available in 18 variations to cover the range from 4.0 to 23 TR (14 to 81 kW) in 50 Hz and from 4.5 to 26 TR (16 to 92 kW) in 60Hz at nominal ARI conditions, which make them ideally suited for use in apartments, offices, shops, schools and the like.**

**SKM split units are suitable to operate in a wide range of ambient temperatures from 60°F (15.5°C) to 125°F (52.0°C).**

**SKM split units are internally wired and all that is required to be done on site is ducting, refrigerant piping and power supply which reduces installation work and consequently keeps costs to a minimum.**

SKM split air conditioner are simply,



*Built in the Gulf...for the World*

# SKM Split Air Conditioners ACUM + CADX Series - R22

## GENERAL FEATURES

SKM split Air Conditioners incorporate many salient features in both the indoor and outdoor units which, together, provides a heavy duty, robust and long lasting commercial unit meant for high end residential and most commercial applications.

The Split Air Conditioners combine high efficiency components to provide an extremely rugged and energy efficient split system that will provide cooling with higher efficiency over a long and extended life.

What makes SKM split systems yet another model in the top class range of SKM products is the use of :

- High efficiency totally sealed hermetic compressors utilising the most current state of the art technology.
- Totally enclosed, Class F insulated, IP55 protected condenser and evaporator fan motors.
- Heavy duty condenser and evaporator coils optimised in design for long-life maintenance free operation.
- Cabinet construction specifically for Gulf climates.
- Electrical panel with many features, as standard.
- Factory matched performance and reliable output to minimise field decisions.
- Many standard features not included in residential domestic type split systems.
- SKM quality proven through a Quality Assurance & Quality Control (QA/QC) system that has received the ISO-9001 stamp of independent verification.

## COMPONENT FEATURES

### CADX FAN COIL UNIT

#### Evaporator

The CADX fan coil unit evaporator is made of Hi-X seamless copper tubes mechanically expanded into corrugated aluminium fins to optimise heat transfer from refrigerant to air.

Coils conform to ARI-410/91. All evaporator coils are leak tested to 250 psig (1720 kPa) by pressurizing the air in the coils under water. Each evaporator coil is supplied with a factory sized and matched thermostatic expansion valve.

The evaporator fan is forward curved double inlet double width, multi-blade centrifugal fan driven by V-belts. For accurate adjustment of air flow, the evaporator fan is driven by adjustable variable pitch pulley. Fans are statically and dynamically balanced.

The evaporator fan motor is IP55 totally enclosed air cooled, 4 poles, and rated for continuous operation at design conditions. Motors conform to relevant BS/IEC standards.

#### Filter

1 inch (25mm) filter section with cleanable media is standard and built into the CADX fan coil. The filter section is designed for easy filter access and removal for maintenance. Filters provide average dust arrestance of 54% as per ASHRAE test # 52.1.

### ACUM CONDENSING UNIT

#### Compressor

The ACUM compressor is hermetically sealed reciprocating type equipped with crankcase heater. Compressors conform to relevant European and American standards like NF, VDE, CSA & UL.

All compressors are refrigerant gas cooled and equipped with built-in protection (internal overload device and internal pressure relief valve) for long life.

The compressor incorporating built-in muffler is mounted on springs within a heavy gauge steel housing to give an extra low noise level and a very quiet unit, overall. The compressor as a unit is mounted on resilient isolators within the condensing unit to reduce annoying vibrations.



#### Condenser

The condenser coils are manufactured from waffle louver aluminium cross fins and special Hi-X seamless copper tubes. The internal surface of the tubes is modified by serration to ensure optimum heat transfer. All coils are fully pressure tested against leakage at 450 psig (3100 kPa) by pressurising air in the coils under water.

A sub-cooler section is incorporated in the lower section of the condenser to increase system capacity. This additional condenser surface provides more cooling using less energy and at no additional cost. The condenser fans are propeller type, aluminium alloy blades, directly driven by totally enclosed electric motors. The fans are arranged for vertical air flow discharge. The impeller fans are statically and dynamically balanced. The fans are provided with heavy duty acrylic coated guards.

The condenser fan motors are totally enclosed air over (TEAO) Class-F insulation, IP55 protection, 6 poles and rated for continuous operation at design conditions. These motors are factory wired to unit control panel where the motor contactors are located to control the operation of the motors. Motors conform to relevant BS/IEC standards.



# SKM Split Air Conditioners ACUM + CADX Series - R22

## Casing/Structure

The unit casing used in the SKM split air conditioners is made of zinc coated galvanised steel sheets conforming to JIS-G 3302 and ASTM A525 which is phosphatized and baked after an electrostatic powder coat of approximately 60 microns. This finish and coating can pass a 1000 hour in 5% salt spray testing at 95°F (35°C) and 95% relative humidity as per ASTM B117.

Panels and casing are insulated with 1/2" (13.0 mm) thick fibre glass (with BGT coating) thermal and acoustic insulation having density of 2 lb/cubic ft. (32.0 kg/m<sup>3</sup>) and thermal conductivity of 0.23 BTU. in/ft<sup>2</sup>°Fh (0.033 W/m °K). Insulation meets the requirement of NFPA 90A and 90B for fire resistance.

## Control Panel

Outdoor condensing units are provided with a weatherproof control panel enclosure comprising all starting, operating and safety controls.

The following are the standard components used in all SKM Split System Air Conditioners.

- Compressor contactors.
- Condenser fan motor contactors and overload relays.
- ON/OFF control switch.
- High/Low pressure switch.
- Anti-recycling time delay relay.
- 24 volt control transformer for remote thermostat connection.
- Starter matching CADX unit with Coil Voltage: 24V.
- Power and control terminals.

## Optional Accessories

As with all SKM air conditioning units, a wide range of options are available with SKM Split Units on request.

- **Copper Fins [For Outdoor Unit Only]** (FC)
- **Pre Coated Aluminum Fins** (FAP)
- **Aeris Coating for Aluminium Fins /Copper Fins.** (FAA)/(FCA)
- **2" (50mm) Flat Filter Section** (FFS)  
2 inch thick filter section with washable /aluminium media
- **Voltage Monitoring Module** (VMM)  
Factory installed to provide protection in the event of phase burnout, phase reversal and under voltage on the incoming line voltage.
- **Voltage Monitoring Module** (DVM)  
To meet DEWA regulations. This option is available for Dubai, U.A.E. only.
- **High & Low Pressure Gauges** (SDG)  
Factory installed for each compressor to monitor the high side and low side operating pressure.
- **Manual reset hi-Pressure Gauges** (MHS)  
Factory installed as an alternate to standard auto reset type switch.
- **Liquid Line Controls** (CRSP)  
Refrigeration specialties comprising solenoid valve, filter drier, sight glass and shut-off valve. Factory sizing and selection ensures correctly sized and selected components to complete the field installation.
- **Low voltage thermostats** (COTS)  
Wall mounted 24 volts cooling thermostats, supplied loose for field installation.
- **Rotalock Valves on Compressors** (RVC)
- **External Overload Protection** (EOP)  
For those electrical specification requires additional overload protection for the compressors.

# SKM Split Air Conditioners ACUM + CADX Series - R22

## SPECIFICATIONS

Split Air Conditioner Model		ACUM	050	060	070	080	090	100	105	110	
		CADX	050	050	070	070	090	100	105	110	
Cooling Capacity (1)	50Hz	MBH	49.6	52.6	61.9	64.4	75.9	87.2	89.9	103.5	
		kW	14.5	15.4	18.1	18.9	22.3	25.6	26.4	30.3	
	60Hz	MBH	54.9	58.2	68.5	71.3	83.9	95.2	98.8	114.4	
		kW	16.1	17.0	20.1	20.9	24.6	27.9	29.0	33.5	
cooling Capacity (2)	50Hz	MBH	45.4	47.9	56.5	58.7	69.6	79.7	81.8	93.9	
		kW	13.3	14.0	16.6	17.2	20.4	23.3	24.0	27.5	
	60Hz	MBH	50.2	53.1	62.8	65.3	77.1	87.0	90.2	104.0	
		kW	14.7	15.6	18.4	19.1	22.6	25.5	26.4	30.5	
Capacity Steps		%	100-0				100-50-0		100-0	100-50-0	
Number of circuits		#	1				2		1	2	
Refrigerant Type			R-22								

Condensing Unit ACUM			050	060	070	080	090	100	105	110				
Compressor	Type	-	Fully Hermetic Reciprocating											
	Code / Qty	-	MH-50/1	MH-56/1	MH-64/1	MH-72/1	MH-80/1	MH-50/2	MH-100/1	MH-56/2				
	Oil Charge	US Gal	0.5				2 x 0.5		1.1	2 x 0.5				
Litre		1.9				2 x 1.9		4.2	2 x 1.9					
Coil	Type	-	Cross Fin Waffle Louver, Hi-X Tubes, 12 fpi											
	Face Area	ft2	7				10							
		m2	0.65				0.93							
Fan	Type	-	Direct Driven Propeller with Aluminium Blade											
	Code / Qty	-	628 / 1			723 / 1		729 / 1		823 / 1				
	AFR (50Hz)	cfm	3700			5990		6500		7260				
		l/s	2110			2830		3070		4150				
	AFR (60Hz)	cfm	4500			6940		7290		8880				
		l/s	2570			3280		3440		5070				
Motor	Type	-	Totally Enclosed Air Over, Class F insulation & IP 55											
	50Hz	Size	0.37			0.75		1.1						
		Size	0.55			1.1		1.5						
Unit Weight (Approximate)	lbs	300			310		320		365		420		430	
	kg	136			140		145		165		190		195	

Fan Coil Unit CADX			050	070	090	100	105	110						
Coil	Type	-	Hi-X Tubes, Corrugated Fins - 12 FPI											
	Face Area	ft2	3.54		4.42		5.2		7.1					
		m2	0.33		0.41		0.48		0.66					
Fan	Type	-	Centrifugal DIDW Belt Driven											
	Code / Qty	-	N10/1			N12/1								
	AFR	cfm	1620		2120		2400		2640		2800		3280	
		l/s	764		1000		1133		1246		1321		1548	
Motor	Type	-	Totally Enclosed Fan Cooled, Class F insulation and IP 55											
	Size	kW	0.55		0.75		1.1		1.5					
Unit Weight (Approximate)	lbs	177		180		220		230		270				
	kg	80		82		100		105		123				

Table 1

### Notes:

- (1) The capacity based on evaporator entering air conditions of 80°/67°F (26.7°C/19.4°C) dry bulb/wet bulb and condenser entering air temperature of 95°F (35°C)
- (2) Capacity rating in accordance with AHRI standard 210/240 & 340/360.



# SKM Split Air Conditioners ACUM + CADX Series - R22

## SPECIFICATIONS

Split Air Conditioner Model		ACUM	120	125	140	145	155	160	220	240	300	320
		CADX	110	125	160	155	155	160	220	240	240	240
Cooling Capacity (1)	50Hz	MBH	110.6	110.8	136.2	138.3	145.5	145.9	180.6	226.4	252.0	264.2
		kW	32.4	32.5	39.9	40.5	42.6	42.8	52.9	66.4	73.9	77.4
	60Hz	MBH	121.5	122.0	150.5	152.4	159.8	160.7	198.5	248.6	277.2	289.7
		kW	35.6	35.8	44.1	44.7	46.8	47.1	58.2	72.9	81.2	84.9
cooling Capacity (2)	50Hz	MBH	101.3	100.0	124.9	125.0	132.5	134.1	164.3	203.4	227.9	241.3
		kW	29.7	29.3	36.6	36.6	38.8	39.3	48.2	59.6	66.8	70.7
	60Hz	MBH	111.7	110.7	138.6	138.2	146.2	148.3	181.2	224.6	251.6	265.8
		kW	32.7	32.5	40.6	40.5	42.9	43.5	53.1	65.8	73.7	77.9
Capacity Steps		%	100-50-0	100-0	100-50-0	100-0			100-50-0			
Number of circuits		#	2	1	2	1			2			
Refrigerant Type			R-22									

Condensing Unit ACUM		ACUM	120	125	140	145	155	160	220	240	300	320
Compressor	Type	-	Fully Hermetic Reciprocating									
	Code / Qty	-	MH-64/2	MH-125/1	MH-72/2	MH-144/1	MH-160/1	MH-80/2	MH-100/2	MH-125/2	MH-144/2	MH-160/2
	Oil Charge	US Gal	2 x 0.5	1.1	2 x 0.5	1.1		2 x 0.5	2 x 1.1			
		Litre	2 x 1.9	4.2	2 x 1.9	4.2		2 x 1.9	2 x 4.2			
Coil	Type	-	Cross Fin Waffle Louver, Hi-X Tubes, 12 fpi									
	Face Area	ft <sup>2</sup>	10		20.6						34.4	
		m <sup>2</sup>	0.93		1.9						3.19	
Fan	Type	-	Direct Driven Propeller with Aluminium Blade									
	Code / Qty	-	823 / 1		723 / 2				729 / 2		823 / 2	
	AFR (50Hz)	cfm	7260		12140				13260		18000	
		l/s	4150		5729				6257		8490	
	AFR (60Hz)	cfm	8880		14100				14960		21900	
		l/s	5070		6654				7060		10330	
Motor	Type	-	Totally Enclosed Air Over, Class F insulation & IP 55									
	50Hz	Size	1.1		2 x 0.75				2 x 1.1		2 x 1.5	
	60Hz	Size	1.5		2 x 1.1				2 x 1.5		2 x 2.2	
Unit Weight (Approximate)		lbs	440		750				860	870	1000	
		kg	200		341				391	396	455	

Fan Coil Unit CADX		ACUM	110	125	160	155	160	220	240	
Coil	Type	-	Hi-X Tubes, Corrugated Fins - 12 FPI							
	Face Area	ft <sup>2</sup>	7.1		8.72				11.9	14.75
		m <sup>2</sup>	0.66		0.81				1.11	1.37
Fan	Type	-	Centrifugal DIDW Belt Driven							
	Code / Qty	-	N12/1		N10-8 G2L/1			N12-12 G2/1		
	AFR	cfm	3280	3600	4800			6000	7980	
		l/s	1548	1699	2265			2831	3766	
Motor	Type	-	Totally Enclosed Fan Cooled, Class F insulation and IP 55							
	Size	kW	1.5		3.0			4.0		
Unit Weight (Approximate)		lbs	270		350			370	440	
		kg	123		159			168	200	

Table 2

### Notes:

- (1) The capacity based on evaporator entering air conditions of 80°/67°F (26.7°/19.4°C) dry bulb/wet bulb and condenser entering air temperature of 95°F (35°C)
- (2) Capacity rating in accordance with AHRI standard 210/240 & 340/360.

# SKM Split Air Conditioners ACUM + CADX Series - R22

## CAPACITY RATINGS - (50Hz)

ACUM + CADX	AFR cfm l/s (BPF)	EWB °F °C		Condenser Entering Air Temperature																							
				95°F (35°C)						105°F (41°C)						115°F (46°C)						125°F (52°C)					
				Total Capacity		Sensible Capacity		PI	Total Capacity		Sensible Capacity		PI	Total Capacity		Sensible Capacity		PI	Total Capacity		Sensible Capacity		PI				
				MBh	kW	MBh	kW	kW	MBh	kW	MBh	kW	kW	MBh	kW	MBh	kW	kW	MBh	kW	MBh	kW	kW				
050 + 050	1380	62	16.70	43.8	12.8	36.1	10.6	3.7	41.9	12.3	35.3	10.4	4.0	39.9	11.7	34.5	10.1	4.3	37.8	11.1	33.6	9.8	4.5				
	651	67	19.40	48.2	14.1	30.5	8.9	3.9	46.2	13.5	29.7	8.7	4.2	44.1	12.9	29.0	8.5	4.5	42.0	12.3	28.2	8.3	4.8				
	0.22	72	22.20	52.3	15.3	24.6	7.2	4.0	50.3	14.7	23.9	7.0	4.3	48.2	14.1	23.2	6.8	4.6	46.2	13.5	22.5	6.6	5.0				
	1620	62	16.70	45.1	13.2	39.1	11.4	3.8	43.1	12.6	38.2	11.2	4.0	41.0	12.0	37.4	11.0	4.3	38.8	11.4	36.5	10.7	4.6				
	764	67	19.40	49.6	14.5	32.7	9.6	3.9	47.6	13.9	31.9	9.3	4.2	45.4	13.3	31.1	9.1	4.5	43.3	12.7	30.3	8.9	4.8				
	0.24	72	22.20	53.9	15.8	26.0	7.6	4.1	51.8	15.2	25.3	7.4	4.4	49.7	14.6	24.6	7.2	4.7	47.6	14.0	23.9	7.0	5.0				
	1870	62	16.70	46.1	13.5	41.9	12.3	3.8	44.0	12.9	41.1	12.0	4.1	41.9	12.3	40.2	11.8	4.4	39.7	11.6	39.4	11.5	4.6				
	882	67	19.40	50.8	14.9	34.8	10.2	4.0	48.7	14.3	34.0	10.0	4.3	46.5	13.6	33.3	9.7	4.6	44.3	13.0	32.5	9.5	4.9				
	0.26	72	22.20	55.2	16.2	27.4	8.0	4.1	53.0	15.5	26.7	7.8	4.4	50.9	14.9	26.0	7.6	4.8	48.8	14.3	25.3	7.4	5.1				
060 + 050	1380	62	16.70	46.7	13.7	37.4	11.0	4.2	44.7	13.1	36.5	10.7	4.6	42.5	12.5	35.6	10.4	5.0	40.2	11.8	34.6	10.1	5.5				
	651	67	19.40	51.1	15.0	31.6	9.3	4.4	48.9	14.3	30.8	9.0	4.8	46.6	13.7	29.9	8.8	5.3	44.2	13.0	29.0	8.5	5.7				
	0.22	72	22.20	55.2	16.2	25.6	7.5	4.5	52.9	15.5	24.8	7.3	5.0	50.4	14.8	23.9	7.0	5.5	47.9	14.0	23.1	6.8	6.0				
	1620	62	16.70	48.1	14.1	40.3	11.8	4.3	45.9	13.5	39.4	11.5	4.7	43.6	12.8	38.5	11.3	5.1	41.3	12.1	37.5	11.0	5.5				
	764	67	19.40	52.6	15.4	33.8	9.9	4.4	50.3	14.8	32.9	9.7	4.9	47.9	14.0	32.0	9.4	5.3	45.4	13.3	31.1	9.1	5.8				
	0.24	72	22.20	56.9	16.7	27.0	7.9	4.6	54.5	16.0	26.2	7.7	5.0	51.9	15.2	25.3	7.4	5.5	49.2	14.4	24.5	7.2	6.1				
	1870	62	16.70	49.2	14.4	43.2	12.7	4.3	46.9	13.8	42.3	12.4	4.7	44.6	13.1	41.3	12.1	5.1	42.1	12.3	40.3	11.8	5.6				
	882	67	19.40	53.8	15.8	35.9	10.5	4.5	51.5	15.1	35.0	10.3	4.9	48.9	14.3	34.1	10.0	5.4	46.4	13.6	33.2	9.7	5.9				
	0.26	72	22.20	58.2	17.1	28.4	8.3	4.6	55.7	16.3	27.6	8.1	5.1	53.0	15.5	26.7	7.8	5.6	50.3	14.7	25.8	7.6	6.1				
070 + 070	1800	62	16.70	54.8	16.1	45.9	13.5	5.1	52.5	15.4	45.0	13.2	5.4	50.1	14.7	44.0	12.9	5.8	47.5	13.9	42.9	12.6	6.2				
	849	67	19.40	60.2	17.6	38.6	11.3	5.3	57.7	16.9	37.7	11.0	5.7	55.1	16.1	36.7	10.8	6.1	52.3	15.3	35.6	10.4	6.6				
	0.23	72	22.20	65.2	19.1	30.9	9.1	5.5	62.5	18.3	30.0	8.8	5.9	59.7	17.5	29.1	8.5	6.3	56.8	16.7	28.1	8.2	6.8				
	2120	62	16.70	56.3	16.5	49.7	14.6	5.1	53.9	15.8	48.8	14.3	5.5	51.4	15.1	47.7	14.0	5.9	48.7	14.3	46.6	13.7	6.3				
	1000	67	19.40	61.9	18.1	41.4	12.1	5.3	59.3	17.4	40.5	11.9	5.7	56.5	16.6	39.5	11.6	6.2	53.6	15.7	38.4	11.3	6.6				
	0.25	72	22.20	67.1	19.7	32.8	9.6	5.5	64.3	18.8	31.9	9.3	6.0	61.3	18.0	30.9	9.1	6.4	58.3	17.1	29.9	8.8	6.9				
	2440	62	16.70	57.5	16.9	53.4	15.6	5.2	55.0	16.1	52.4	15.3	5.6	52.3	15.3	51.3	15.0	5.9	49.6	14.5	49.6	14.5	6.4				
	1151	67	19.40	63.2	18.5	44.1	12.9	5.4	60.5	17.7	43.1	12.6	5.8	57.6	16.9	42.1	12.3	6.2	54.6	16.0	41.1	12.0	6.7				
	0.27	72	22.20	68.5	20.1	34.5	10.1	5.6	65.6	19.2	33.6	9.8	6.0	62.5	18.3	32.6	9.6	6.5	61.0	17.9	32.1	9.4	6.7				
080 + 070	1800	62	16.70	57.3	16.8	47.0	13.8	5.6	54.9	16.1	46.0	13.5	6.0	52.4	15.4	44.9	13.2	6.5	49.7	14.6	43.8	12.8	7.0				
	849	67	19.40	62.6	18.4	39.5	11.6	5.8	60.0	17.6	38.6	11.3	6.4	57.3	16.8	37.5	11.0	6.9	54.3	15.9	36.4	10.7	7.4				
	0.23	72	22.20	67.6	19.8	31.8	9.3	6.1	64.8	19.0	30.8	9.0	6.6	61.8	18.1	29.8	8.7	7.2	60.3	17.7	29.3	8.6	7.4				
	2120	62	16.70	58.9	17.3	50.8	14.9	5.7	56.4	16.5	49.8	14.6	6.1	53.7	15.7	48.7	14.3	6.6	50.9	14.9	47.5	13.9	7.1				
	1000	67	19.40	64.4	18.9	42.4	12.4	5.9	61.7	18.1	41.3	12.1	6.5	58.7	17.2	40.3	11.8	7.0	57.2	16.8	39.7	11.6	7.2				
	0.25	72	22.20	69.6	20.4	33.6	9.8	6.2	66.6	19.5	32.6	9.6	6.7	63.4	18.6	31.6	9.3	7.3	61.8	18.1	31.1	9.1	7.5				
	2440	62	16.70	60.1	17.6	54.4	16.0	5.7	57.5	16.8	53.4	15.6	6.2	54.7	16.0	52.3	15.3	6.7	51.8	15.2	51.1	15.0	7.2				
	1151	67	19.40	65.8	19.3	45.0	13.2	6.0	62.9	18.4	44.0	12.9	6.5	59.9	17.5	42.9	12.6	7.1	58.3	17.1	42.4	12.4	7.3				
	0.27	72	22.20	71.0	20.8	35.3	10.3	6.3	67.9	19.9	34.3	10.1	6.8	64.7	19.0	33.3	9.7	7.4	63.0	18.5	32.7	9.6	7.6				
090 + 090	2050	62	16.70	67.4	19.8	54.6	16.0	6.0	64.6	18.9	53.4	15.7	6.5	61.8	18.1	52.2	15.3	7.1	58.8	17.2	50.9	14.9	7.6				
	967	67	19.40	73.8	21.6	46.1	13.5	6.3	70.8	20.8	45.0	13.2	6.8	67.7	19.9	43.8	12.8	7.4	64.5	18.9	42.6	12.5	8.0				
	0.22	72	22.20	79.8	23.4	37.2	10.9	6.5	76.6	22.5	36.1	10.6	7.1	73.3	21.5	35.0	10.2	7.7	69.8	20.5	33.8	9.9	8.3				
	2400	62	16.70	69.3	20.3	58.8	17.2	6.1	66.4	19.5	57.6	16.9	6.6	63.4	18.6	56.4	16.5	7.2	60.2	17.7	55.1	16.2	7.7				
	1133	67	19.40	75.9	22.2	49.3	14.4	6.4	72.8	21.3	48.1	14.1	6.9	69.5	20.4	46.9	13.7	7.5	66.1	19.4	45.6	13.4	8.1				
	0.24	72	22.20	82.1	24.1	39.2	11.5	6.6	78.8	23.1	38.1	11.2	7.2	75.3	22.1	37.0	10.8	7.8	71.6	21.0	35.8	10.5	8.4				
	2650	62	16.70	70.4	20.6	61.7	18.1	6.1	67.4	19.8	60.5	17.7	6.6	64.3	18.9	59.3	17.4	7.2	61.1	17.9	58.0	17.0	7.8				
	1251	67	19.40	77.1	22.6	51.4	15.1	6.4	73.9	21.7	50.2	14.7	7.0	70.6	20.7	49.0	14.4	7.6	67.0	19.7	47.7	14.0	8.1				
	0.25	72	22.20	83.5	24.5	40.6	11.9	6.7	80.0	23.5	39.5	11.6	7.2	76.4	22.4	38.3	11.2	7.8	72.6	21.3	37.1	10.9	8.5				
100 + 100	2340	62	16.70	77.7	22.8	61.8	18.1	7.3	74.3	21.8	60.4	17.7	7.8	70.7	20.7	58.8	17.2	8.4	67.0	19.6	57.3	16.8	8.9				
	1104	67	19.40	85.2	25.0	52.4	15.4	7.7	81.7	23.9	51.0	15.0	8.2	77.9	22.8	49.6	14.5	8.8	74.2	21.8	48.2	14.1	9.4				
	0.24	72	22.20	92.3	27.1	42.5	12.5	8.0	88.6	26.0	41.2	12.1	8.5	84.9	24.9	39.9	11.7	9.1	81.2	23.8	38.7	11.3	9.8				
	2640	62	16.70	79.5	23.3	65.4	19.2	7.4	75.9	22.3	63.9	18.7	7.9	72.2	21.2	62.4	18.3	8.4	68.4	20.1	60.8	17.8	9.0				
	1246	67	19.40	87.2	25.5	55.1	16.1	7.8	83.5	24.5	53.7	15.7	8.3	79.6	23.3	52.2	15.3	8.9	75.9	22.2	50.8	14.9	9.5				
	0.25	72	22.20	94.4	27.7	44.2	13.0	8.1	90.6	26.6	43.0	12.6	8.6	86.8													

# SKM Split Air Conditioners ACUM + CADX Series - R22

## CAPACITY RATINGS - (50Hz)

ACUM + CADX	AFR cfm l/s (BPF)	EWB		Condenser Entering Air Temperature																							
				95°F (35°C)						105°F (41°C)						115°F (46°C)						125°F (52°C)					
				Total Capacity		Sensible Capacity		PI	Total Capacity		Sensible Capacity		PI	Total Capacity		Sensible Capacity		PI	Total Capacity		Sensible Capacity		PI				
				MBh	kW	MBh	kW	kW	MBh	kW	MBh	kW	kW	MBh	kW	MBh	kW	kW	MBh	kW	MBh	kW	kW				
105 + 105	2500	62	16.70	80.5	23.6	69.9	20.5	7.0	76.8	22.5	68.4	20.0	7.5	73.1	21.4	66.8	19.6	8.1	69.1	20.3	65.1	19.1	8.7				
	1180	67	19.40	88.3	25.9	58.5	17.1	7.2	84.4	24.7	57.0	16.7	7.8	80.4	23.6	55.5	16.3	8.5	76.1	22.3	53.9	15.8	9.2				
	0.19	72	22.20	95.6	28.0	46.6	13.7	7.4	91.5	26.8	45.2	13.2	8.1	87.3	25.6	43.7	12.8	8.8	82.6	24.2	42.2	12.4	9.5				
	2800	62	16.70	81.9	24.0	74.0	21.7	7.0	78.2	22.9	72.4	21.2	7.6	74.4	21.8	70.9	20.8	8.2	70.2	20.6	69.2	20.3	8.8				
	1321	67	19.40	89.9	26.4	61.5	18.0	7.3	85.9	25.2	60.0	17.6	7.9	81.8	24.0	58.5	17.1	8.6	77.3	22.7	56.8	16.7	9.2				
	0.20	72	22.20	97.4	28.6	48.5	14.2	7.4	93.9	27.3	47.1	13.8	8.1	88.8	26.0	45.6	13.4	8.9	84.0	24.6	44.1	12.9	9.6				
	3100	62	16.70	83.1	24.4	77.9	22.8	7.1	79.3	23.2	76.3	22.4	7.6	75.4	22.1	74.7	21.9	8.2	71.1	20.8	71.1	20.8	8.9				
	1463	67	19.40	91.2	26.7	64.3	18.9	7.3	87.2	25.5	62.8	18.4	7.9	82.9	24.3	61.3	18.0	8.6	78.3	23.0	59.6	17.5	9.3				
	0.22	72	22.20	98.9	29.0	50.3	14.7	7.5	94.6	27.7	48.9	14.3	8.2	90.0	26.4	47.4	13.9	8.9	85.1	24.9	45.8	13.4	9.6				
110 + 110	2790	62	16.70	92.1	27.0	74.5	21.8	8.8	87.9	25.8	72.7	21.3	9.5	83.5	24.5	70.8	20.8	10.4	78.9	23.1	68.9	20.2	11.3				
	1317	67	19.40	100.7	29.5	62.9	18.4	9.1	96.2	28.2	61.1	17.9	10.0	91.5	26.8	59.3	17.4	10.9	86.7	25.4	57.6	16.9	11.9				
	0.22	72	22.20	108.7	31.9	50.7	14.9	9.4	103.9	30.5	49.0	14.4	10.4	98.9	29.0	47.3	13.9	11.4	96.4	28.3	46.5	13.6	11.9				
	3280	62	16.70	94.7	27.8	80.4	23.6	8.9	90.3	26.5	78.6	23.0	9.7	85.7	25.1	76.7	22.5	10.5	80.9	23.7	74.8	21.9	11.4				
	1548	67	19.40	103.6	30.4	67.3	19.7	9.2	98.9	29.0	65.5	19.2	10.1	93.90	27.5	63.6	18.7	11.1	91.4	26.8	62.7	18.4	11.6				
	0.24	72	22.20	111.9	32.8	53.5	15.7	9.6	106.8	31.3	51.8	15.2	10.6	101.6	29.8	50.1	14.7	11.6	99.0	29.0	49.3	14.4	12.1				
	3780	62	16.70	96.7	28.4	86.1	25.2	9.0	92.2	27.0	84.3	24.7	9.8	87.4	25.6	82.4	24.1	10.7	82.5	24.2	80.4	23.6	11.6				
	1784	67	19.40	105.9	31.0	71.5	20.9	9.3	101.0	29.6	69.7	20.4	10.3	95.9	28.1	67.8	19.9	11.2	93.3	27.3	66.9	19.6	11.7				
	0.26	72	22.20	114.4	33.5	56.3	16.5	9.7	109.1	32.0	54.6	16.0	10.7	103.70	30.4	52.8	15.5	11.7	101.0	29.6	51.9	15.2	12.2				
120 + 110	2790	62	16.70	98.0	28.7	77.1	22.6	10.0	94.1	27.6	75.3	22.1	10.7	89.9	26.3	73.5	21.5	11.4	85.4	25.0	71.6	21.0	12.3				
	1317	67	19.40	107.3	31.4	65.4	19.2	10.5	103.0	30.2	63.8	18.7	11.2	98.4	28.9	62.0	18.2	12.0	96.1	28.2	61.1	17.9	12.5				
	0.22	72	22.20	116.0	34.0	53.2	15.6	10.9	111.4	32.6	51.6	15.1	11.7	106.5	31.2	49.9	14.6	12.6	104.00	30.5	49.1	14.4	13.1				
	3280	62	16.70	101.0	29.6	83.1	24.3	10.1	96.8	28.4	81.3	23.8	10.8	92.4	27.1	79.4	23.3	11.6	87.7	25.7	77.5	22.7	12.5				
	1548	67	19.40	110.6	32.4	69.9	20.5	10.6	106.1	31.1	68.2	20.0	11.4	101.3	29.7	66.4	19.5	12.2	98.8	29.0	65.5	19.2	12.7				
	0.24	72	22.20	119.6	35.1	56.1	16.4	11.0	114.7	33.6	54.5	16.0	11.9	109.6	32.1	52.8	15.5	12.8	107.0	31.4	51.9	15.2	13.3				
	3780	62	16.70	103.4	30.3	88.9	26.0	10.3	99.0	29.0	87.1	25.5	11.0	94.4	27.7	85.2	25.0	11.7	89.5	26.2	83.2	24.4	12.6				
	1784	67	19.40	113.2	33.2	74.2	21.7	10.7	108.5	31.8	72.4	21.2	11.5	103.5	30.3	70.6	20.7	12.4	101.0	29.6	69.7	20.4	12.8				
	0.26	72	22.20	122.5	35.9	58.9	17.3	11.2	117.4	34.4	57.2	16.8	12.0	112.1	32.9	55.5	16.3	12.9	109.40	32.1	54.6	16.0	13.4				
125 + 125	3200	62	16.70	99.3	29.1	81.6	23.9	9.5	94.8	27.8	79.6	23.3	10.2	89.9	26.4	77.6	22.8	10.9	84.7	24.8	75.5	22.1	11.7				
	1510	67	19.40	108.7	31.8	68.6	20.1	9.9	103.7	30.4	66.8	19.6	10.7	98.3	28.8	64.7	19.0	11.5	95.4	28.0	63.6	18.7	11.9				
	0.24	72	22.20	117.4	34.4	55.1	16.1	10.3	111.8	32.8	53.2	15.6	11.1	105.7	31.0	51.2	15.0	12.0	102.60	30.1	50.1	14.7	12.5				
	3600	62	16.70	101.3	29.7	86.2	25.3	9.6	96.5	28.3	84.3	24.7	10.3	91.5	26.8	82.3	24.1	11.0	88.9	26.0	81.2	23.8	11.4				
	1699	67	19.40	110.8	32.5	72.1	21.1	10.0	105.6	31.0	70.1	20.6	10.8	100.0	29.3	68.1	20.0	11.6	97.0	28.4	67.0	19.6	12.0				
	0.25	72	22.20	119.8	35.1	57.3	16.8	10.4	113.9	33.4	55.4	16.2	11.3	107.5	31.5	53.3	15.6	12.2	104.2	30.5	52.2	15.3	12.7				
	3800	62	16.70	102.1	29.9	88.5	25.9	9.6	97.3	28.5	86.6	25.4	10.3	92.2	27.0	84.5	24.8	11.0	89.5	26.2	83.4	24.4	11.4				
	1793	67	19.40	111.8	32.8	73.8	21.6	10.1	106.5	31.2	71.8	21.0	10.8	100.7	29.5	69.7	20.4	11.6	97.7	28.6	68.6	20.1	12.1				
	0.26	72	22.20	120.8	35.4	58.4	17.1	10.5	114.8	33.6	56.5	16.5	11.3	108.2	31.7	54.3	15.9	12.2	104.9	30.7	53.3	15.6	12.7				
140 + 160	4060	62	16.70	120.9	35.4	101.0	29.6	10.5	116.0	34.0	98.9	29.0	11.4	111.0	32.5	96.8	28.4	12.3	105.6	31.0	94.6	27.7	13.3				
	1916	67	19.40	132.5	38.8	84.8	24.9	10.9	127.3	37.3	82.8	24.3	11.9	121.8	35.7	80.8	23.7	12.9	116.0	34.0	78.6	23.0	14.0				
	0.24	72	22.20	143.5	42.1	67.9	19.9	11.3	137.8	40.4	66.0	19.3	12.3	131.9	38.7	64.0	18.8	13.4	125.6	36.8	62.0	18.2	14.5				
	4800	62	16.70	124.2	36.4	109.5	32.1	10.6	119.0	34.9	107.4	31.5	11.5	113.7	33.3	105.3	30.8	12.5	108.1	31.7	103.0	30.2	13.5				
	2265	67	19.40	136.2	39.9	91.1	26.7	11.0	130.6	38.3	89.0	26.1	12.0	124.9	36.6	87.0	25.5	13.0	118.8	34.8	84.8	24.9	14.1				
	0.27	72	22.20	147.5	43.2	72.0	21.1	11.4	141.5	41.5	70.0	20.5	12.4	135.3	39.7	68.0	19.9	13.6	128.7	37.7	65.9	19.3	14.6				
	5230	62	16.70	125.6	36.8	114.3	33.5	10.7	120.4	35.3	112.1	32.9	11.6	115.0	33.7	110.0	32.2	12.5	109.3	32.0	107.7	31.6	13.6				
	2468	67	19.40	137.8	40.4	94.6	27.7	11.1	132.2	38.7	92.5	27.1	12.1	126.3	37.0	90.5	26.5	13.1	120.10	35.2	88.3	25.9	14.2				
	0.28	72	22.20	149.3	43.8	74.2	21.8	11.5	143.2	42.0	72.3	21.2	12.5	136.9	40.1	70.2	20.6	13.6	130.2	38.1	68.1	20.0	14.7				
145 + 155	4060	62	16.70	122.6	35.9	101.7	29.8	10.0	116.8	34.2	99.3	29.1	10.8	110.7	32.4	96.7	28.3	11.6	104.2	30.5	94.1	27.6	12.5				
	1916	67	19.40	134.5	39.4	85.5	25.1	10.3	128.4	37.6	83.2	24.4	11.2	121.8	35.7	80.8	23.7	12.1	114.8	33.7	78.2	22.9	13.1				
	0.24	72	22.20	145.8	42.7	68.6	20.1	10.6	139.2	40.8	66.5	19.5	11.6	132.2	38.8	64.1	18.8	12.6	124.9	36.6	61.7	18.1	13.6				
	4800	62	16.70	125.9	36.9	110.2	32.3	10.1	119.9	35.1	107.8	31.6	10.9	113.5	33.3	105.2	30.8	11.7	106.7	31.3	102.5	30.0	12.6				
	2265	67	19.40																								

# SKM Split Air Conditioners ACUM + CADX Series - R22

## CAPACITY RATINGS - (50Hz)

ACUM + CADX	AFR cfm l/s (BPF)	EWB		Condenser Entering Air Temperature																							
				95°F (35°C)						105°F (41°C)						115°F (46°C)						125°F (52°C)					
				Total Capacity		Sensible Capacity		PI	Total Capacity		Sensible Capacity		PI	Total Capacity		Sensible Capacity		PI	Total Capacity		Sensible Capacity		PI				
				MBh	kW	MBh	kW	kW	MBh	kW	MBh	kW	kW	MBh	kW	MBh	kW	kW	MBh	kW	MBh	kW	kW				
155 + 155	4060	62	16.70	128.9	37.8	104.3	30.6	11.2	123.2	36.1	101.9	29.9	2.1	117.5	34.4	99.5	29.2	12.9	111.3	32.6	97.0	28.4	13.8				
	1916	67	19.40	141.3	41.4	88.1	25.8	11.6	135.3	39.6	85.8	25.2	12.6	129.0	37.8	83.5	24.5	13.5	122.1	35.8	80.9	23.7	14.5				
	0.24	72	22.20	153.1	44.9	71.2	20.9	12.0	146.7	43.0	68.9	20.2	13.0	139.6	40.9	66.6	19.5	14.0	131.8	38.6	64.0	18.8	15.1				
	4800	62	16.70	132.6	38.9	112.9	33.1	11.3	126.6	37.1	110.5	32.4	12.2	120.6	35.3	108.0	31.7	13.1	114.1	33.4	105.4	30.9	14.0				
	2265	67	19.40	145.5	42.6	94.5	27.7	11.8	139.1	40.8	92.1	27.0	12.7	132.5	38.8	89.7	26.3	13.7	125.1	36.7	87.0	25.5	14.7				
	0.27	72	22.20	157.7	46.2	75.3	22.1	12.2	150.9	44.2	73.1	21.4	13.2	143.3	42.0	70.6	20.7	14.2	135.0	39.6	67.9	19.9	15.3				
	5230	62	16.70	134.2	39.3	117.7	34.5	11.4	128.2	37.6	115.3	33.8	12.3	122.0	35.8	112.8	33.1	13.2	115.4	33.8	110.2	32.3	14.1				
	2468	67	19.40	147.4	43.2	98.0	28.7	11.9	140.9	41.3	95.7	28.0	12.8	134.0	39.3	93.2	27.3	13.7	126.5	37.1	90.5	26.5	14.8				
	0.28	72	22.20	159.8	46.8	77.6	22.8	12.3	152.8	44.8	75.4	22.1	13.3	145.0	42.5	72.8	21.4	14.3	136.4	40.0	70.1	20.5	15.5				
160 + 160	4060	62	16.70	129.6	38.0	104.7	30.7	11.8	124.5	36.5	102.5	30.0	12.7	119.2	34.9	100.3	29.4	13.8	113.6	33.3	97.9	28.7	14.9				
	1916	67	19.40	141.8	41.6	88.3	25.9	12.3	136.3	40.0	86.2	25.3	13.3	130.6	38.3	84.1	24.6	14.5	124.5	36.5	81.8	24.0	15.6				
	0.24	72	22.20	153.3	44.9	71.3	20.9	12.7	147.5	43.2	69.2	20.3	13.8	141.3	41.4	67.1	19.7	15.0	134.7	39.5	64.9	19.0	16.2				
	4800	62	16.70	133.3	39.1	113.2	33.2	11.9	127.9	37.5	111.0	32.5	12.9	122.4	35.9	108.8	31.9	14.0	116.5	34.1	106.4	31.2	15.1				
	2265	67	19.40	145.9	42.8	94.7	27.8	12.4	140.1	41.1	92.5	27.1	13.5	134.1	39.3	90.3	26.5	14.7	127.7	37.4	88.0	25.8	15.8				
	0.27	72	22.20	157.8	46.3	75.4	22.1	12.9	151.6	44.4	73.3	21.5	14.0	145.1	42.5	71.2	20.9	15.2	138.2	40.5	69.0	20.2	16.4				
	5230	62	16.70	134.9	39.5	118.0	34.6	12.0	129.4	37.9	115.8	33.9	13.0	123.8	36.3	113.5	33.3	14.1	117.8	34.5	111.1	32.6	15.2				
	2468	67	19.40	147.8	43.3	98.2	28.8	12.5	141.9	41.6	96.0	28.1	13.6	135.7	39.8	93.8	27.5	14.7	129.2	37.9	91.5	26.8	15.9				
	0.28	72	22.20	159.9	46.9	77.6	22.8	13.0	153.5	45.0	75.6	22.2	14.1	146.9	43.0	73.4	21.5	15.3	139.8	41.0	71.2	20.9	16.5				
220 + 220	4800	62	16.70	158.3	46.4	127.7	37.4	13.9	151.2	44.3	124.7	36.5	14.9	144.0	42.2	121.6	35.7	16.0	136.20	39.9	118.4	34.7	17.2				
	2265	67	19.40	173.5	50.9	108.0	31.7	14.3	166.0	48.7	105.1	30.8	15.5	158.3	46.4	102.2	30.0	16.7	149.90	43.9	99.0	29.0	18.1				
	0.22	72	22.20	187.9	55.1	87.3	25.6	14.7	180.0	52.8	84.6	24.8	15.9	171.7	50.3	81.8	24.0	17.4	162.7	47.7	78.8	23.1	18.8				
	6000	62	16.70	164.5	48.2	142.0	41.6	14.1	157.0	46.0	138.9	40.7	15.1	149.3	43.8	135.8	39.8	16.3	141.0	41.3	132.5	38.8	17.6				
	2831	67	19.40	180.5	52.9	118.6	34.8	14.5	172.5	50.6	115.7	33.9	15.7	164.3	48.2	112.7	33.0	17.0	155.30	45.5	109.4	32.1	18.4				
	0.25	72	22.20	195.7	57.3	94.3	27.6	14.8	187.2	54.9	91.5	26.8	16.2	178.4	52.3	88.6	26.0	17.7	168.70	49.5	85.5	25.1	19.1				
	6600	62	16.70	166.9	48.9	148.8	43.6	14.1	159.1	46.6	145.7	42.7	15.2	151.3	44.3	142.6	41.8	16.4	142.80	41.9	139.2	40.8	17.7				
	3115	67	19.40	183.2	53.7	123.6	36.2	14.5	175.0	51.3	120.7	35.4	15.8	166.6	48.8	117.6	34.5	17.1	157.4	46.1	114.4	33.5	18.5				
	0.27	72	22.20	198.6	58.2	97.5	28.6	14.9	189.9	55.7	94.7	27.8	16.2	180.9	53.0	91.8	26.9	17.8	171.0	50.1	88.6	26.0	19.2				
240 + 240	6780	62	16.70	201.7	59.1	168.8	49.5	19.3	192.2	56.3	164.8	48.3	20.6	182.2	53.4	160.7	47.1	22.1	176.9	51.8	158.5	46.5	22.9				
	3199	67	19.40	220.7	64.7	141.6	41.5	20.1	210.3	61.6	137.7	40.3	21.6	199.0	58.3	133.4	39.1	23.3	193.0	56.6	131.2	38.5	24.1				
	0.24	72	22.20	238.4	69.9	113.1	33.1	21.0	226.60	66.4	109.1	32.0	22.6	213.7	62.6	104.9	30.7	24.4	207.30	60.8	102.8	30.1	25.4				
	7980	62	16.70	206.8	60.6	182.6	53.5	19.5	196.9	57.7	178.6	52.3	20.9	186.40	54.6	174.3	51.1	22.4	180.80	53.0	172.1	50.4	23.2				
	3766	67	19.40	226.4	66.4	151.7	44.5	20.4	215.4	63.1	147.7	43.3	21.9	203.4	59.6	143.3	42.0	23.6	197.2	57.8	141.1	41.4	24.5				
	0.26	72	22.20	244.6	71.7	119.6	35.1	21.3	232.00	68.0	115.5	33.9	23.0	218.2	64.0	111.1	32.6	24.8	211.5	62.0	108.9	31.9	25.9				
	8850	62	16.70	209.7	61.5	192.2	56.3	19.6	199.6	58.5	188.1	55.1	21.0	188.7	55.3	183.8	53.9	22.5	182.9	53.6	181.5	53.2	23.3				
	4176	67	19.40	229.7	67.3	158.7	46.5	20.5	218.2	64.0	154.7	45.3	22.1	205.8	60.3	150.3	44.1	23.8	199.4	58.5	148.1	43.4	24.7				
	0.28	72	22.20	248.1	72.7	124.1	36.4	21.4	234.90	68.8	119.9	35.1	23.1	220.6	64.7	115.4	33.8	25.1	213.80	62.7	113.3	33.2	26.1				
300 + 240	6780	62	16.70	224.0	65.6	178.2	52.2	20.1	213.5	62.6	173.7	50.9	21.6	202.4	59.3	169.1	49.6	23.2	190.7	55.9	164.2	48.1	24.9				
	3199	67	19.40	245.0	71.8	150.8	44.2	20.8	233.90	68.5	146.5	43.0	22.5	222.00	65.1	142.1	41.6	24.2	209.5	61.4	137.3	40.3	26.2				
	0.24	72	22.20	264.9	77.6	122.1	35.8	21.5	253.1	74.2	118.1	34.6	23.3	240.4	70.5	113.7	33.3	25.2	227.2	66.6	109.3	32.0	27.3				
	7980	62	16.70	230.3	67.5	192.2	56.3	20.3	219.4	64.3	187.7	55.0	21.8	207.8	60.9	182.9	53.6	23.5	195.5	57.3	178.0	52.2	25.2				
	3766	67	19.40	252.1	73.9	161.3	47.3	21.1	240.4	70.5	156.9	46.0	22.8	228.0	66.8	152.2	44.6	24.6	214.9	63.0	147.5	43.2	26.5				
	0.26	72	22.20	272.7	79.9	128.9	37.8	21.8	260.30	76.3	124.8	36.6	23.6	247.0	72.4	120.4	35.3	25.6	233.20	68.4	115.9	34.0	27.7				
	8850	62	16.70	233.9	68.5	202.0	59.2	20.4	222.7	65.3	197.4	57.9	22.0	210.7	61.8	192.6	56.5	23.6	198.20	58.1	187.6	55.0	25.4				
	4176	67	19.40	256.1	75.1	168.4	49.4	21.2	244.1	71.6	164.0	48.1	22.9	231.4	67.8	159.3	46.7	24.7	218.0	63.9	154.6	45.3	26.7				
	0.28	72	22.20	277.2	81.2	133.6	39.2	21.9	264.4	77.5	129.4	37.9	23.8	250.8	73.5	125.0	36.6	25.8	236.6	69.3	120.5	35.3	27.9				
320 + 240	6780	62	16.70	234.7	68.8	182.9	53.6	22.5	224.70	65.9	178.5	52.3	24.1	214.4	62.8	174.1	51.0	25.8	203.30	59.6	169.4	49.7	27.6				
	3199	67	19.40	256.5	75.2	155.3	45.5	23.4	245.90	72.1	151.2	44.3	25.2	234.8	68.8	146.9	43.1	27.0	222.5	65.2	142.3	41.7	29.0				
	0.24	72	22.20	277.3	81.3	126.5	37.1	24.3	266.0	78.0	122.5	35.9	26.1	253.7	74.4	118.3	34.7	28.0	240.1	70.4	113.6	33.3	30.3				

# SKM Split Air Conditioners ACUM + CADX Series - R22

## CAPACITY RATINGS - (60Hz)

ACUM + CADX	AFR cfm l/s (BPF)	EWB °F °C		Condenser Entering Air Temperature																							
				95°F (35°C)						105°F (41°C)						115°F (46°C)						125°F (52°C)					
				Total Capacity		Sensible Capacity		PI	Total Capacity		Sensible Capacity		PI	Total Capacity		Sensible Capacity		PI	Total Capacity		Sensible Capacity		PI				
				MBh	kW	MBh	kW	kW	MBh	kW	MBh	kW	kW	MBh	kW	MBh	kW	kW	MBh	kW	MBh	kW	kW				
050 + 050	1380	62	16.70	48.5	14.2	38.1	11.2	4.4	46.4	13.6	37.2	10.9	4.7	44.1	12.9	36.3	10.6	5.0	41.9	12.3	35.3	10.3	5.3				
	651	67	19.40	53.2	15.6	32.4	9.5	4.6	51.0	15.0	31.6	9.3	4.9	48.7	14.3	30.7	9.0	5.2	46.4	13.6	29.8	8.7	5.6				
	0.22	72	22.20	57.7	16.9	26.4	7.8	4.7	55.4	16.2	25.7	7.5	5.1	53.1	15.6	24.8	7.3	5.4	50.8	14.9	24.1	7.1	5.8				
	1620	62	16.70	50.0	14.7	41.1	12.0	4.4	47.8	14.0	40.2	11.8	4.7	45.5	13.3	39.2	11.5	5.1	43.1	12.6	38.2	11.2	5.4				
	764	67	19.40	54.9	16.1	34.7	10.2	4.6	52.6	15.4	33.8	9.9	5.0	50.2	14.7	32.9	9.6	5.3	47.9	14.0	32.0	9.4	5.7				
	0.24	72	22.20	59.5	17.5	27.9	8.2	4.8	57.2	16.8	27.1	7.9	5.2	54.8	16.1	26.3	7.7	5.5	52.5	15.4	25.5	7.5	5.9				
	1870	62	16.70	51.2	15.0	44.0	12.9	4.5	49.0	14.3	43.1	12.6	4.8	46.5	13.6	42.1	12.3	5.1	44.1	12.9	41.1	12.1	5.4				
	882	67	19.40	56.3	16.5	36.8	10.8	4.7	53.9	15.8	35.9	10.5	5.0	51.5	15.1	35.1	10.3	5.4	49.1	14.4	34.2	10.0	5.7				
0.26	72	22.20	61.1	17.9	29.3	8.6	4.9	58.7	17.2	28.5	8.4	5.2	56.2	16.5	27.7	8.1	5.6	53.8	15.8	27.0	7.9	6.0					
060 + 050	1380	62	16.70	51.6	15.1	39.5	11.6	5.0	49.4	14.5	38.6	11.3	5.4	47.1	13.8	37.5	11.0	5.9	44.7	13.1	36.5	10.7	6.4				
	651	67	19.40	56.4	16.5	33.7	9.9	5.2	54.0	15.8	32.8	9.6	5.7	51.6	15.1	31.8	9.3	6.2	49.0	14.4	30.8	9.0	6.7				
	0.22	72	22.20	60.8	17.8	27.6	8.1	5.3	58.4	17.1	26.7	7.8	5.9	55.7	16.3	25.8	7.6	6.4	53.1	15.6	24.8	7.3	7.0				
	1620	62	16.70	53.2	15.6	42.5	12.5	5.1	50.9	14.9	41.5	12.2	5.5	48.5	14.2	40.5	11.9	6.0	45.9	13.5	39.4	11.5	6.5				
	764	67	19.40	58.2	17.0	35.9	10.5	5.2	55.7	16.3	35.0	10.2	5.7	53.1	15.6	34.0	10.0	6.3	50.4	14.8	33.0	9.7	6.8				
	0.24	72	22.20	62.8	18.4	29.0	8.5	5.4	60.2	17.6	28.1	8.2	6.0	57.4	16.8	27.2	8.0	6.5	54.6	16.0	26.2	7.7	7.1				
	1870	62	16.70	54.6	16.0	45.4	13.3	5.1	52.2	15.3	44.4	13.0	5.6	49.6	14.5	43.4	12.7	6.1	47.0	13.8	42.3	12.4	6.6				
	882	67	19.40	59.6	17.5	38.1	11.2	5.3	57.1	16.7	37.1	10.9	5.8	54.4	15.9	36.1	10.6	6.4	51.6	15.1	35.1	10.3	6.9				
0.26	72	22.20	64.4	18.9	30.4	8.9	5.5	61.7	18.1	29.5	8.7	6.0	58.8	17.2	28.6	8.4	6.6	55.9	16.4	27.6	8.1	7.2					
070 + 070	1800	62	16.70	60.7	17.8	48.5	14.2	6.0	58.3	17.1	47.4	13.9	6.4	55.7	16.3	46.3	13.6	6.8	52.9	15.5	45.1	13.2	7.3				
	849	67	19.40	66.5	19.5	41.0	12.0	6.2	63.9	18.7	40.0	11.7	6.7	61.1	17.9	38.9	11.4	7.2	58.1	17.0	37.8	11.1	7.7				
	0.23	72	22.20	72.0	21.1	33.3	9.7	6.5	69.1	20.3	32.3	9.5	6.9	66.1	19.4	31.2	9.2	7.5	64.6	18.9	30.7	9.0	7.8				
	2120	62	16.70	62.5	18.3	52.3	15.3	6.0	59.9	17.6	51.2	15.0	6.5	57.2	16.8	50.1	14.7	6.9	54.3	15.9	48.9	14.3	7.4				
	1000	67	19.40	68.6	20.1	43.9	12.9	6.3	65.8	19.3	42.9	12.6	6.8	62.8	18.4	41.8	12.2	7.3	59.7	17.5	40.6	11.9	7.8				
	0.25	72	22.20	74.2	21.7	35.1	10.3	6.5	71.2	20.9	34.1	10.0	7.0	68.0	19.9	33.1	9.7	7.6	66.4	19.5	32.5	9.5	7.9				
	2440	62	16.70	63.9	18.7	56.0	16.4	6.1	61.2	17.9	54.9	16.1	6.5	58.4	17.1	53.7	15.8	7.0	55.4	16.2	52.5	15.4	7.5				
	1151	67	19.40	70.1	20.6	46.6	13.7	6.4	67.2	19.7	45.6	13.4	6.9	64.1	18.8	44.4	13.0	7.4	62.6	18.3	43.9	12.9	7.6				
0.27	72	22.20	75.9	22.3	36.9	10.8	6.6	72.8	21.3	35.9	10.5	7.1	69.5	20.4	34.8	10.2	7.7	67.8	19.9	34.3	10.0	7.9					
080 + 070	1800	62	16.70	63.4	18.6	49.6	14.5	6.5	60.9	17.9	48.5	14.2	7.1	58.2	17.1	47.4	13.9	7.7	55.3	16.2	46.1	13.5	8.2				
	849	67	19.40	69.2	20.3	42.1	12.3	6.9	66.5	19.5	41.0	12.0	7.5	63.6	18.6	39.9	11.7	8.1	62.0	18.2	39.3	11.5	8.4				
	0.23	72	22.20	74.7	21.9	34.2	10.0	7.2	71.7	21.0	33.2	9.7	7.6	68.5	20.1	32.1	9.4	8.4	66.9	19.6	31.5	9.2	8.7				
	2120	62	16.70	65.3	19.2	53.5	15.7	6.6	62.7	18.4	52.4	15.3	7.2	59.8	17.5	51.2	15.0	7.8	56.8	16.6	49.9	14.6	8.4				
	1000	67	19.40	71.3	20.9	45.0	13.2	7.0	68.4	20.1	43.9	12.9	7.6	65.3	19.1	42.7	12.5	8.2	63.7	18.7	42.1	12.3	8.5				
	0.25	72	22.20	76.9	22.6	36.1	10.6	7.3	73.8	21.6	35.0	10.3	7.9	70.5	20.7	33.9	9.9	8.6	68.7	20.1	33.3	9.8	8.9				
	2440	62	16.70	66.8	19.6	57.2	16.8	6.7	64.0	18.8	56.0	16.4	7.3	61.1	17.9	54.8	16.1	7.9	57.9	17.0	53.5	15.7	8.5				
	1151	67	19.40	73.0	21.4	47.7	14.0	7.1	69.9	20.5	46.5	13.6	7.7	66.7	19.5	45.4	13.3	8.3	65.0	19.1	44.7	13.1	8.6				
0.27	72	22.20	78.7	23.1	37.8	11.1	7.4	75.4	22.1	36.7	10.8	8.0	71.9	21.1	35.6	10.4	8.7	70.1	20.6	35.0	10.3	9.0					
090 + 090	2050	62	16.70	74.4	21.8	57.6	16.9	7.1	71.5	21.0	56.4	16.5	7.7	68.5	20.1	55.1	16.1	8.3	65.3	19.1	53.7	15.7	9.0				
	967	67	19.40	81.3	23.8	49.1	14.4	7.4	78.2	22.9	47.8	14.0	8.0	75.0	22.0	46.5	13.6	8.7	71.5	20.9	45.2	13.2	9.4				
	0.22	72	22.20	87.8	25.7	40.0	11.7	7.7	84.5	24.8	38.8	11.4	8.4	81.0	23.7	37.6	11.0	9.1	77.2	22.6	36.3	10.6	9.8				
	2400	62	16.70	76.7	22.5	61.9	18.2	7.2	73.6	21.6	60.6	17.8	7.8	70.5	20.7	59.3	17.4	8.4	67.1	19.7	57.9	17.0	9.1				
	1133	67	19.40	83.8	24.6	52.2	15.3	7.5	80.6	23.6	51.0	14.9	8.1	77.1	22.6	49.7	14.6	8.8	73.4	21.5	48.3	14.2	9.5				
	0.24	72	22.20	90.6	26.6	42.1	12.3	7.8	87.1	25.5	40.9	12.0	8.5	83.3	24.4	39.6	11.6	9.2	79.4	23.3	38.3	11.2	9.9				
	2650	62	16.70	78.0	22.9	64.9	19.0	7.2	74.8	21.9	63.6	18.6	7.8	71.6	21.0	62.2	18.2	8.5	68.1	20.0	60.8	17.8	9.2				
	1251	67	19.40	85.3	25.0	54.4	16.0	7.6	81.9	24.0	53.2	15.6	8.2	78.3	23.0	51.8	15.2	8.9	74.6	21.9	50.4	14.8	9.6				
0.25	72	22.20	92.2	27.0	43.5	12.8	7.9	88.5	25.9	42.3	12.4	8.6	84.7	24.8	41.0	12.0	9.3	80.6	23.6	39.7	11.6	10.0					
100 + 100	2340	62	16.70	0.0	0.0	0.0	0.0	0.0	81.3	23.8	63.4	18.6	9.2	77.4	22.7	61.7	18.1	9.8	73.4	21.5	60.0	17.6	10.5				
	1104	67	19.40	93.0	27.3	55.5	16.3	9.0	89.1	26.1	53.9	15.8	9.6	85.0	24.9	52.3	15.3	10.3	81.0	23.7	50.8	14.9	11.0				
	0.24	72	22.20	100.5	29.5	45.4	13.3	9.4	96.5	28.3	44.0	12.9	10.0	92.4	27.1	42.5	12.5	10.7	88.3	25.9	41.1	12.1	11.5				
	2640	62	16.70	87.0	25.5	68.6	20.1	8.7	83.2	24.4	67.0	19.6	9.3	79.1	23.2	65.3	19.1	9.9	75.0	22.0	63.5	18.6	10.6				
	1246	67	19.40	95.2	27.9	58.1	17.0	9.1	91.2	26.7	56.6	16.6	9.8	87.0	25.5	55.0	16.1	10.4	82.9	24.3	53.5	15.7	11.1				
	0.25	72	22.20	103.0	30.2	47.2	13.8	9.5	98.8	29.0	45.8																

# SKM Split Air Conditioners ACUM + CADX Series - R22

## CAPACITY RATINGS - (60Hz)

ACUM + CADX	AFR cfm /s (BPF)	EWB		Condenser Entering Air Temperature																							
				95°F (35°C)						105°F (41°C)						115°F (46°C)						125°F (52°C)					
				Total Capacity		Sensible Capacity		PI	Total Capacity		Sensible Capacity		PI	Total Capacity		Sensible Capacity		PI	Total Capacity		Sensible Capacity		PI				
				MBh	kW	MBh	kW	kW	MBh	kW	MBh	kW	kW	MBh	kW	MBh	kW	kW	MBh	kW	MBh	kW	kW				
105 +	105	2500	62	16.70	88.5	26.0	73.4	21.5	8.3	84.7	24.8	71.7	21.0	8.9	80.7	23.6	70.0	20.5	9.6	76.3	22.4	68.2	20.0	10.3			
		1180	67	19.40	96.9	28.4	61.9	18.1	8.6	92.8	27.2	60.3	17.7	9.3	88.5	25.9	58.6	17.2	10.1	83.8	24.6	56.8	16.6	10.8			
		0.19	72	22.20	104.8	30.7	49.8	14.6	8.9	100.4	29.4	48.3	14.1	9.7	95.8	28.1	46.7	13.7	10.5	93.4	27.4	45.8	13.4	10.9			
		2800	62	16.70	90.3	26.5	77.5	22.7	8.4	86.3	25.3	75.8	22.2	9.0	82.1	24.1	74.1	21.7	9.7	77.6	22.8	72.2	21.2	10.4			
		1321	67	19.40	98.8	29.0	64.9	19.0	8.7	94.6	27.7	63.3	18.5	9.4	90.1	26.4	61.6	18.1	10.2	85.2	25.0	59.8	17.5	11.0			
		0.20	72	22.20	106.9	31.3	51.7	15.2	9.0	102.4	30.0	50.2	14.7	9.7	97.6	28.6	48.6	14.2	10.6	95.1	27.9	47.7	14.0	11.0			
		3100	62	16.70	91.6	26.9	81.4	23.9	8.5	87.5	25.7	79.7	23.4	9.1	83.3	24.4	78.0	22.8	9.7	78.7	23.1	76.1	22.3	10.5			
		1463	67	19.40	100.4	29.4	67.8	19.9	8.8	96.0	28.1	66.1	19.4	9.5	91.5	26.8	64.4	18.9	10.2	86.4	25.3	62.6	18.3	11.0			
0.22	72	22.20	108.6	31.8	53.5	15.7	9.0	104.0	30.5	52.0	15.2	9.8	99.1	29.0	50.4	14.8	10.7	96.5	28.3	49.5	14.5	11.1					
110 +	110	2790	62	16.70	101.7	29.8	78.7	23.1	10.4	97.2	28.5	76.7	22.5	11.2	92.4	27.1	74.6	21.9	12.2	87.6	25.7	72.5	21.3	13.2			
		1317	67	19.40	111.0	32.5	66.9	19.6	10.8	106.2	31.1	65.0	19.1	11.8	101.1	29.6	63.0	18.5	12.9	98.5	28.9	62.0	18.2	13.4			
		0.22	72	22.20	119.7	35.1	54.5	16.0	11.2	114.6	33.6	52.7	15.5	12.3	109.2	32.0	50.9	14.9	13.5	106.5	31.2	49.9	14.6	14.1			
		3280	62	16.70	104.8	30.7	84.7	24.8	10.5	100.1	29.3	82.7	24.2	11.4	95.1	27.9	80.6	23.6	12.4	90.0	26.4	78.5	23.0	13.5			
		1548	67	19.40	114.4	33.5	71.3	20.9	11.0	109.4	32.1	69.4	20.4	12.0	104.1	30.5	67.4	19.8	13.1	101.4	29.7	66.4	19.5	13.7			
		0.24	72	22.20	123.4	36.2	57.4	16.8	11.4	118.0	34.6	55.6	16.3	12.5	112.4	33.0	53.7	15.7	13.7	109.6	32.1	52.8	15.5	14.3			
		3780	62	16.70	107.3	31.4	90.5	26.5	10.6	102.4	30.0	88.4	25.9	11.6	97.2	28.5	86.3	25.3	12.6	91.9	26.9	84.2	24.7	13.6			
		1784	67	19.40	117.2	34.3	75.7	22.2	11.1	111.9	32.8	73.7	21.6	12.1	106.40	31.2	71.6	21.0	13.3	103.6	30.4	70.6	20.7	13.8			
0.26	72	22.20	126.4	37.1	60.2	17.6	11.5	120.8	35.4	58.3	17.1	12.7	115.0	33.7	56.5	16.5	13.9	112.1	32.8	55.5	16.3	14.5					
120 +	110	2790	62	16.70	107.7	31.6	81.4	23.8	11.7	103.5	30.3	79.5	23.3	12.5	99.1	29.0	77.5	22.7	13.3	94.3	27.6	75.4	22.1	14.3			
		1317	67	19.40	117.6	34.5	69.6	20.4	12.3	113.1	33.2	67.8	19.9	13.1	108.3	31.8	65.9	19.3	14.1	105.8	31.0	64.9	19.0	14.6			
		0.22	72	22.20	127.0	37.2	57.1	16.7	12.8	122.2	35.8	55.4	16.2	13.7	117.0	34.3	53.6	15.7	14.7	114.3	33.5	52.6	15.4	15.3			
		3280	62	16.70	111.3	32.6	87.4	25.6	11.9	106.8	31.3	85.5	25.1	12.7	102.1	29.9	83.5	24.5	13.5	99.6	29.2	82.5	24.2	14.0			
		1548	67	19.40	121.6	35.6	74.1	21.7	12.5	116.8	34.2	72.3	21.2	13.4	111.7	32.7	70.3	20.6	14.3	109.0	32.0	69.3	20.3	14.9			
		0.24	72	22.20	131.3	38.5	60.2	17.6	13.0	126.1	37.0	58.4	17.1	14.0	120.7	35.4	56.5	16.6	15.0	117.9	34.5	55.5	16.3	15.6			
		3780	62	16.70	114.1	33.4	93.3	27.3	12.1	109.4	32.1	91.4	26.8	12.9	104.5	30.6	89.3	26.2	13.7	101.9	29.9	88.3	25.9	14.2			
		1784	67	19.40	124.7	36.5	78.5	23.0	12.6	119.7	35.1	76.6	22.5	13.5	114.4	33.5	74.6	21.9	14.5	111.6	32.7	73.6	21.6	15.1			
0.26	72	22.20	134.7	39.5	63.0	18.5	13.2	129.3	37.9	61.2	17.9	14.1	123.6	36.2	59.3	17.4	15.2	120.7	35.4	58.3	17.1	15.8					
125 +	125	3200	62	16.70	109.4	32.1	85.9	25.2	11.2	104.6	30.7	83.8	24.6	12.0	99.5	29.2	81.6	23.9	12.8	96.8	28.4	80.5	23.6	13.3			
		1510	67	19.40	119.5	35.0	72.8	21.3	11.7	114.3	33.5	70.8	20.7	12.5	108.7	31.9	68.6	20.1	13.4	105.7	31.0	67.5	19.8	13.9			
		0.24	72	22.20	128.9	37.8	59.1	17.3	12.1	123.2	36.1	57.1	16.7	13.1	117.0	34.3	55.0	16.1	14.1	113.7	33.3	53.8	15.8	14.6			
		3600	62	16.70	111.8	32.8	90.6	26.6	11.3	106.7	31.3	88.5	25.9	12.1	101.40	29.7	86.3	25.3	12.9	98.6	28.9	85.1	25.0	13.4			
		1699	67	19.40	122.0	35.8	76.3	22.4	11.8	116.6	34.2	74.3	21.8	12.7	110.8	32.5	72.1	21.1	13.6	107.6	31.5	70.9	20.8	14.1			
		0.25	72	22.20	131.7	38.6	61.4	18.0	12.3	125.7	36.9	59.3	17.4	13.2	119.2	34.9	57.1	16.7	14.3	115.8	33.9	56.0	16.4	14.8			
		3800	62	16.70	112.7	33.0	92.9	27.2	11.3	107.7	31.6	90.8	26.6	12.1	102.30	30.0	88.6	26.0	13.0	99.4	29.1	87.4	25.6	13.5			
		1793	67	19.40	123.1	36.1	78.0	22.9	11.9	117.6	34.5	76.0	22.3	12.7	111.7	32.7	73.7	21.6	13.7	108.5	31.8	72.5	21.3	14.2			
0.26	72	22.20	132.9	39.0	62.4	18.3	12.3	126.8	37.2	60.4	17.7	13.3	120.1	35.2	58.2	17.1	14.3	116.7	34.2	57.1	16.7	14.9					
140 +	160	4060	62	16.70	133.7	39.2	106.4	31.2	12.3	128.5	37.7	104.2	30.5	13.4	123.2	36.1	101.9	29.9	14.5	117.5	34.4	99.5	29.2	15.7			
		1916	67	19.40	146.2	42.9	90.0	26.4	12.9	140.7	41.2	87.9	25.8	14.0	134.9	39.5	85.7	25.1	15.2	128.7	37.7	83.4	24.4	16.4			
		0.24	72	22.20	158.1	46.3	72.9	21.4	13.3	152.1	44.6	70.8	20.8	14.5	145.9	42.8	68.7	20.1	15.8	139.2	40.8	66.5	19.5	17.1			
		4800	62	16.70	137.6	40.3	115.0	33.7	12.5	132.1	38.7	112.7	33.0	13.5	126.5	37.1	110.4	32.4	14.7	120.5	35.3	108.0	31.7	15.9			
		2265	67	19.40	150.5	44.1	96.4	28.3	13.0	144.7	42.4	94.2	27.6	14.2	138.6	40.6	92.0	27.0	15.4	132.1	38.7	89.6	26.3	16.7			
		0.27	72	22.20	162.8	47.7	77.0	22.6	13.5	156.5	45.9	74.9	22.0	14.7	149.9	43.9	72.8	21.3	16.0	143.0	41.9	70.5	20.7	17.3			
		5230	62	16.70	139.3	40.8	119.8	35.1	12.6	133.7	39.2	117.5	34.5	13.6	128.0	37.5	115.2	33.8	14.8	121.9	35.7	112.8	33.0	16.0			
		2468	67	19.40	152.5	44.7	99.9	29.3	13.1	146.5	42.9	97.7	28.6	14.2	140.3	41.1	95.5	28.0	15.5	133.7	39.2	93.1	27.3	16.8			
0.28	72	22.20	164.9	48.3	79.3	23.2	13.6	158.5	46.5	77.2	22.6	14.8	151.8	44.5	75.0	22.0	16.1	144.6	42.4	72.7	21.3	17.4					
145 +	155	4060	62	16.70	135.2	39.6	107.0	31.4	11.8	129.1	37.8	104.4	30.6	12.7	122.5	35.9	101.6	29.8	13.7	115.6	33.9	98.7	28.9	14.7			
		1916	67	19.40	148.0	43.4	90.7	26.6	12.2	141.4	41.5	88.2	25.8	13.2	134.4	39.4	85.5	25.1	14.3	127.0	37.2	82.7	24.2	15.4			
		0.24	72	22.20	160.1	46.9	73.6	21.6	12.6	153.1	44.9	71.2	20.9	13.7	145.7	42.7	68.6	20.1	14.8	137.8	40.4	66.0	19.3	16.0			
		4800	62	16.70	139.2	40.8	115.7	33.9	12.0	132.7	38.9	113.0	33.1	12.9	125.9	36.9	110.2	32.3	13.8	118.6	34.8	107.2	31.4	14.9			
		2265	67	19.40	152.4	44.7	97.1	28.5	12.4	145.6	42.7	94.6	27.7	13.4	138.2	40.5	91.8	26.9	14.4	130.4	38.2	89.0	26.1	15.6			
		0.27	72	22.20	165.0	48.4	77.8	22.8	12.8	157.7	46.2	75.3	22.1	13.8	149.9	43.9	72.8	21.3	15.0	141.6	41.5	70.1	20.5	16.3			
		5230	62	16.70	141.0	41.3	120.5	35.3	12.0	134.4	39.4	117.8	34.5	12.9	127.4	37.3	115.0	33.7	13.9	120.0	35.2	112.0	32.8	15.0			
		2468	67	19.40	154.5	45.3	100.7	29.5	12.4	147.5	43.2	98.1	28.7	13.4	139.9	41.0	95.3	27.9	14.5	132.0	38.7	92.5	27.1	15.7			
0.28	72	22.20	167.2	49.0	80.1	23.5	12.8	159.8	46.8	77.6	22.8	13.9	15														

# SKM Split Air Conditioners ACUM + CADX Series - R22

## CAPACITY RATINGS - (60Hz)

ACUM + CADX	AFR cfm l/s (BPF)	EWB °F °C		Condenser Entering Air Temperature																							
				95°F (35°C)						105°F (41°C)						115°F (46°C)						125°F (52°C)					
				Total Capacity		Sensible Capacity		PI	Total Capacity		Sensible Capacity		PI	Total Capacity		Sensible Capacity		PI	Total Capacity		Sensible Capacity		PI				
				MBh	kW	MBh	kW	kW	MBh	kW	MBh	kW	kW	MBh	kW	MBh	kW	kW	MBh	kW	MBh	kW	kW				
155 + 155	4060	62	16.70	141.7	41.5	109.9	32.2	13.2	135.7	39.8	107.3	31.4	14.2	129.6	38.0	104.7	30.7	15.2	123.1	36.1	101.9	29.9	16.3				
	1916	67	19.40	154.9	45.4	93.4	27.4	13.7	148.6	43.6	90.9	26.7	14.8	142.1	41.7	88.4	25.9	15.9	135.0	39.6	85.7	25.1	17.0				
	0.24	72	22.20	167.6	49.1	76.2	22.3	14.2	160.9	47.1	73.9	21.6	15.3	153.7	45.1	71.4	20.9	16.5	145.8	42.7	68.7	20.1	17.7				
	4800	62	16.70	146.0	42.8	118.5	34.7	13.4	139.7	41.0	115.9	34.0	14.4	133.4	39.1	113.3	33.2	15.4	126.5	37.1	110.4	32.4	16.5				
	2265	67	19.40	159.8	46.8	99.9	29.3	13.9	153.1	44.9	97.4	28.6	15.0	146.3	42.9	94.8	27.8	16.1	138.7	40.6	92.0	27.0	17.3				
	0.27	72	22.20	172.9	50.7	80.4	23.6	14.4	165.8	48.6	78.0	22.9	15.5	158.2	46.4	75.5	22.1	16.7	149.7	43.9	72.7	21.3	18.0				
	5230	62	16.70	148.0	43.4	123.4	36.2	13.5	141.6	41.5	120.8	35.4	14.5	135.1	39.6	118.1	34.6	15.5	128.1	37.5	115.2	33.8	16.6				
	2468	67	19.40	162.0	47.5	103.5	30.3	14.0	155.2	45.5	100.9	29.6	15.1	148.1	43.4	98.3	28.8	16.2	140.3	41.1	95.5	28.0	17.4				
	0.28	72	22.20	175.4	51.4	82.7	24.3	14.5	168.1	49.3	80.3	23.5	15.6	160.2	47.0	77.8	22.8	16.8	151.5	44.4	74.9	22.0	18.1				
160 + 160	4060	62	16.70	142.7	41.8	110.3	32.3	13.8	137.4	40.3	108.0	31.6	15.0	131.9	38.6	105.6	31.0	16.2	125.9	36.9	103.1	30.2	17.5				
	1916	67	19.40	155.9	45.7	93.8	27.5	14.4	150.1	44.0	91.5	26.8	15.6	144.1	42.2	89.2	26.1	17.0	137.7	40.4	86.7	25.4	18.4				
	0.24	72	22.20	168.3	49.3	76.4	22.4	15.0	162.1	47.5	74.3	21.8	16.3	155.7	45.6	72.0	21.1	17.7	148.7	43.6	69.7	20.4	19.1				
	4800	62	16.70	147.1	43.1	119.0	34.9	14.0	141.4	41.4	116.6	34.2	15.2	135.6	39.7	114.2	33.5	16.5	129.3	37.9	111.6	32.7	17.8				
	2265	67	19.40	160.7	47.1	100.2	29.4	14.6	154.6	45.3	98.0	28.7	15.9	148.3	43.5	95.6	28.0	17.3	141.5	41.5	93.0	27.3	18.6				
	0.27	72	22.20	173.5	50.9	80.6	23.6	15.2	167.0	49.0	78.4	23.0	16.5	160.2	47.0	76.1	22.3	18.0	152.9	44.8	73.7	21.6	19.4				
	5230	62	16.70	149.0	43.7	123.8	36.3	14.1	143.3	42.0	121.4	35.6	15.3	137.3	40.2	119.0	34.9	16.6	130.9	38.4	116.4	34.1	17.9				
	2468	67	19.40	162.9	47.7	103.8	30.4	14.7	156.7	45.9	101.5	29.7	16.0	150.2	44.0	99.1	29.0	17.4	143.2	42.0	96.5	28.3	18.7				
	0.28	72	22.20	175.9	51.6	82.9	24.3	15.3	169.3	49.6	80.7	23.7	16.6	162.3	47.6	78.4	23.0	18.1	154.8	45.4	76.0	22.3	19.5				
220 + 220	4800	62	16.70	173.9	51.0	134.5	39.4	16.5	166.4	48.8	131.2	38.5	17.6	158.7	46.5	127.9	37.5	18.9	150.3	44.1	124.3	36.4	20.3				
	2265	67	19.40	190.2	55.8	114.6	33.6	17.1	182.3	53.4	111.4	32.7	18.4	174.1	51.0	108.2	31.7	19.8	165.0	48.4	104.7	30.7	21.4				
	0.22	72	22.20	205.7	60.3	93.6	27.4	17.6	197.3	57.8	90.6	26.6	19.0	188.5	55.3	87.5	25.7	20.6	178.7	52.4	84.2	24.7	22.3				
	6000	62	16.70	181.3	53.1	149.0	43.7	16.7	173.2	50.8	145.6	42.7	18.0	165.0	48.4	142.3	41.7	19.3	156.0	45.7	138.6	40.6	20.7				
	2831	67	19.40	198.5	58.2	125.4	36.8	17.3	190.0	55.7	122.2	35.8	18.7	181.2	53.1	118.9	34.8	20.2	171.4	50.2	115.2	33.8	21.8				
	0.25	72	22.20	214.7	62.9	100.6	29.5	17.8	205.7	60.3	97.6	28.6	19.4	196.3	57.5	94.5	27.7	21.1	185.8	54.4	91.0	26.7	22.7				
	6600	62	16.70	184.1	54.0	155.9	45.7	16.8	175.8	51.5	152.5	44.7	18.1	167.4	49.1	149.1	43.7	19.4	158.2	46.4	145.3	42.6	20.9				
	3115	67	19.40	201.6	59.1	130.5	38.2	17.4	192.9	56.5	127.2	37.3	18.8	183.8	53.9	123.9	36.3	20.4	173.8	50.9	120.2	35.2	22.0				
	0.27	72	22.20	218.1	63.9	103.9	30.5	17.9	208.90	61.2	100.9	29.6	19.5	199.2	58.4	97.7	28.6	21.2	188.4	55.2	94.3	27.6	22.9				
240 + 240	6780	62	16.70	221.6	65.0	177.2	51.9	22.8	211.6	62.0	172.9	50.7	24.4	200.9	58.9	168.4	49.4	26.1	195.2	57.2	166.0	48.7	27.1				
	3199	67	19.40	241.9	70.9	149.6	43.9	23.9	231.1	67.7	145.5	42.6	25.6	219.2	64.3	141.0	41.3	27.5	212.9	62.4	138.6	40.6	28.5				
	0.24	72	22.20	260.9	75.5	120.8	35.4	24.9	248.9	73.0	116.6	34.2	26.8	235.7	69.1	112.2	32.9	28.9	228.9	67.1	109.9	32.2	30.0				
	7980	62	16.70	227.7	66.7	191.2	56.0	23.1	217.20	63.7	186.8	54.8	24.8	205.90	60.4	182.2	53.4	26.5	199.9	58.6	179.7	52.7	27.4				
	3766	67	19.40	248.7	72.9	160.0	46.9	24.2	237.20	69.5	155.6	45.6	26.0	224.60	65.8	151.0	44.3	27.9	218.0	63.9	148.6	43.6	29.0				
	0.26	72	22.20	268.2	78.6	127.4	37.3	25.3	255.30	74.8	123.1	36.1	27.2	241.30	70.7	118.6	34.7	29.4	234.20	68.7	116.3	34.1	30.6				
	8850	62	16.70	231.1	67.7	200.8	58.9	23.3	220.30	64.6	196.5	57.6	25.0	208.70	61.2	191.8	56.2	26.7	202.5	59.4	189.3	55.5	27.7				
	4176	67	19.40	252.5	74.0	167.0	49.0	24.4	240.60	70.5	162.7	47.7	26.2	227.6	66.7	158.0	46.3	28.2	220.8	64.7	155.6	45.6	29.2				
	0.28	72	22.20	272.3	79.8	132.0	38.7	25.5	258.8	75.9	127.6	37.4	27.5	244.3	71.6	122.9	36.0	29.7	237.2	69.5	120.6	35.4	30.9				
300 + 240	6780	62	16.70	0.0	0.0	0.0	0.0	0.0	235.3	69.0	183.1	53.7	25.3	223.60	65.5	178.1	52.2	27.1	211.1	61.9	172.7	50.6	29.1				
	3199	67	19.40	268.9	78.8	160.2	47.0	24.5	257.2	75.4	155.6	45.6	26.3	244.60	71.7	150.7	44.2	28.4	231.2	67.8	145.5	42.7	30.6				
	0.24	72	22.20	290.3	85.1	131.0	38.4	25.3	277.8	81.4	126.7	37.1	27.3	264.40	77.5	122.0	35.8	29.5	250.3	73.4	117.1	34.3	31.9				
	7980	62	16.70	253.8	74.4	202.1	59.2	23.9	242.3	71.0	197.3	57.8	25.6	229.90	67.4	192.1	56.3	27.5	216.8	63.5	186.7	54.7	29.5				
	3766	67	19.40	277.2	81.3	170.7	50.0	24.8	264.90	77.6	166.1	48.7	26.7	251.7	73.8	161.1	47.2	28.8	237.70	69.7	155.8	45.7	31.0				
	0.26	72	22.20	299.4	87.8	138.0	40.4	25.6	286.3	83.9	133.5	39.1	27.7	272.20	79.8	128.7	37.7	30.0	257.5	75.5	123.8	36.3	32.4				
	8850	62	16.70	258.0	75.6	212.0	62.1	24.1	246.2	72.2	207.1	60.7	25.8	233.5	68.4	201.8	59.2	27.7	220.0	64.5	196.4	57.6	29.8				
	4176	67	19.40	282.0	82.6	178.1	52.2	25.0	269.30	78.9	173.3	50.8	26.9	255.7	74.9	168.2	49.3	29.0	241.30	70.7	163.0	47.8	31.3				
	0.28	72	22.20	304.6	89.3	142.7	41.8	25.8	291.1	85.3	138.1	40.5	27.9	276.6	81.1	133.4	39.1	30.2	261.5	76.6	128.5	37.7	32.7				
320 + 240	6780	62	16.70	0.0	0.0	0.0	0.0	0.0	0.0	0.0	0.0	0.0	0.0	235.9	69.2	183.4	53.8	30.1	224.2	65.7	178.3	52.3	32.3				
	3199	67	19.40	280.8	82.3	165.0	48.4	27.3	269.6	79.0	160.5	47.1	29.4	258.10	75.6	155.9	45.7	31.5	245.3	71.9	150.9	44.2	33.8				
	0.24	72	22.20	303.0	88.8	135.5	39.7	28.4	291.2	85.4	131.4	38.5	30.5	278.8	81.7	127.0	37.2	32.7	264.7	77.6	122.1	35.8	35.3				

# SKM Split Air Conditioners ACUM + CADX Series - R22

## Electrical Data

Rated Power Supply: 380-415V/3Ph/50Hz

Model ACUM	Unit Characteristic		Compressor				Condenser Fan Motor			Model CADX	Evaporator Fan Motor	
	MFA	MCA	QTY	MCC Each	RLA	LRA	QTY	FLA Each	LRA Each		FLA	LRA
050	25	16	1	12.0	8.6	42	1	1.4	4.7	050	1.7	6.7
060	25	16	1	12.0	8.6	60	1	1.4	4.7	050	1.7	6.7
070	32	19	1	15.0	10.7	67	1	1.4	4.7	070	2.0	8.6
080	32	20	1	15.5	11.4	80	1	1.4	4.7	070	2.0	8.6
090	40	22	1	18.0	12.9	80	1	2.2	8.7	090	2.0	8.6
100	40	27	2	12.0	8.6	42	1	3.4	14.4	100	2.6	11.6
105	50	28	1	22.0	15.7	90	1	3.4	14.4	105	2.6	11.6
110	40	28	2	12.0	8.6	60	1	3.4	14.4	110	3.7	17.1
120	50	33	2	15.0	10.7	67	1	3.4	14.4	110	3.7	17.1
125	50	33	1	27.0	19.3	105	1	3.4	14.4	125	3.7	17.1
140	50	39	2	15.5	11.4	80	2	2.2	8.7	160	7.1	35.1
145	63	40	1	30.0	21.4	115	2	2.2	8.7	155	7.1	35.1
155	80	46	1	36.0	25.7	140	2	2.2	8.7	155	7.1	35.1
160	63	42	2	18.0	12.9	80	2	2.2	8.7	160	7.1	35.1
220	80	51	2	22.0	15.7	90	2	3.4	14.4	220	7.1	35.1
240	80	61	2	27.0	19.3	105	2	3.4	14.4	240	9.2	49.4
300	100	68	2	30.0	21.4	115	2	4.2	18.7	240	9.2	49.4
320	125	77	2	36.0	25.7	140	2	4.2	18.7	240	9.2	49.4

Table 9

Rated Power Supply: 440V/3Ph/50Hz

Model ACUM	Unit Characteristic		Compressor				Condenser Fan Motor			Model CADX	Evaporator Fan Motor	
	MFA	MCA	QTY	MCC Each	RLA	LRA	QTY	FLA Each	LRA Each		FLA	LRA
050	25	15	1	12.0	8.6	42	1	1.1	4.3	050	1.5	6.0
060	25	15	1	12.0	8.6	60	1	1.1	4.3	050	1.5	6.0
070	32	18	1	15.0	10.7	67	1	1.1	4.3	070	1.8	8.2
080	32	19	1	15.5	11.4	80	1	1.1	4.3	070	1.8	8.2
090	40	22	1	18.0	12.9	80	1	1.9	7.9	090	1.8	8.2
100	40	26	2	12.0	8.6	42	1	2.7	13.1	100	2.3	11.2
105	40	27	1	22.0	15.7	90	1	2.7	13.1	105	2.3	11.2
110	40	27	2	12.0	8.6	60	1	2.7	13.1	110	3.2	16.0
120	50	32	2	15.0	10.7	67	1	2.7	13.1	110	3.2	16.0
125	50	32	1	27.0	19.3	105	1	2.7	13.1	125	3.2	16.0
140	50	38	2	15.5	11.4	80	2	1.9	7.9	160	6.5	33.5
145	63	39	1	30.0	21.4	115	2	1.9	7.9	155	6.5	33.5
155	80	44	1	36.0	25.7	140	2	1.9	7.9	155	6.5	33.5
160	63	41	2	18.0	12.9	80	2	1.9	7.9	160	6.5	33.5
220	63	49	2	22.0	15.7	90	2	2.7	13.1	220	6.5	33.5
240	80	59	2	27.0	19.3	105	2	2.7	13.1	240	8.0	43.0
300	100	65	2	30.0	21.4	115	2	3.6	16.0	240	8.0	43.0
320	100	75	2	36.0	25.7	140	2	3.6	16.0	240	8.0	43.0

Table 10

Rated Power Supply: 380V/3Ph/60Hz

Model ACUM	Unit Characteristic		Compressor				Condenser Fan Motor			Model CADX	Evaporator Fan Motor	
	MFA	MCA	QTY	MCC Each	RLA	LRA	QTY	FLA Each	LRA Each		FLA	LRA
050	25	17	1	13.5	9.6	78	1	1.7	5.6	050	1.6	6.0
060	32	19	1	15.0	10.7	72	1	1.7	5.6	050	1.6	6.0
070	32	21	1	17.5	12.5	72	1	1.7	5.6	070	1.9	7.5
080	40	22	1	18.5	13.2	100	1	1.7	5.6	070	1.9	7.5
090	50	27	1	22.5	16.0	102	1	3.2	12.2	090	1.9	7.5
100	40	30	2	13.5	9.6	78	1	3.8	16.0	100	2.6	10.3
105	50	32	1	26.0	18.7	110	1	3.8	16.0	105	2.6	10.3
110	50	33	2	15.0	10.7	72	1	3.8	16.0	110	3.4	15.3
120	50	37	2	17.5	12.5	72	1	3.8	16.0	110	3.4	15.3
125	63	36	1	30.0	21.4	150	1	3.8	16.0	125	3.4	15.3
140	63	45	2	18.5	13.2	100	2	3.2	12.2	160	6.7	31.3
145	80	51	1	40.0	28.6	165	2	3.2	12.2	155	6.7	31.3
155	100	56	1	46.0	32.9	165	2	3.2	12.2	155	6.7	31.3
160	80	51	2	22.5	16.0	102	2	3.2	12.2	160	6.7	31.3
220	80	58	2	26.0	18.7	110	2	3.8	16.0	220	6.7	31.3
240	100	66	2	30.0	21.4	150	2	3.8	16.0	240	8.4	44.0
300	125	85	2	40.0	28.6	165	2	5.4	27.5	240	8.4	44.0
320	160	95	2	46.0	32.9	165	2	5.4	27.5	240	8.4	44.0

Table 11



# SKM Split Air Conditioners ACUM + CADX Series - R22

## Electrical Data

Rated Power Supply: 460V/3Ph/60Hz

Model ACUM	Unit Characteristic		Compressor				Condenser Fan Motor			Model CADX	Evaporator Fan Motor	
	MFA	MCA	QTY	MCC Each	RLA	LRA	QTY	FLA Each	LRA Each		FLA	LRA
050	25	16	1	12.0	8.6	42	1	1.6	6.6	050	1.6	7.0
060	25	16	1	12.0	8.6	60	1	1.6	6.6	050	1.6	7.0
070	32	19	1	15.0	10.7	67	1	1.6	6.6	070	1.7	8.7
080	32	20	1	15.5	11.4	80	1	1.6	6.6	070	1.7	8.7
090	40	23	1	18.0	12.9	80	1	2.9	14.4	090	1.7	8.7
100	40	27	2	12.0	8.6	42	1	3.7	17.3	100	2.3	12.0
105	50	28	1	22.0	15.7	90	1	3.7	17.3	105	2.3	12.0
110	40	28	2	12.0	8.6	60	1	3.7	17.3	110	3.4	18.0
120	50	33	2	15.0	10.7	67	1	3.7	17.3	110	3.4	18.0
125	50	33	1	27.0	19.3	105	1	3.7	17.3	125	3.4	18.0
140	50	40	2	15.5	11.4	80	2	2.9	14.4	160	6.2	36.5
145	63	41	1	30.0	21.4	115	2	2.9	14.4	155	6.2	36.5
155	80	46	1	36.0	25.7	140	2	2.9	14.4	155	6.2	36.5
160	63	43	2	18.0	12.9	80	2	2.9	14.4	160	6.2	36.5
220	80	51	2	22.0	15.7	90	2	3.7	17.3	220	6.2	36.5
240	80	61	2	27.0	19.3	105	2	3.7	17.3	240	7.8	51.0
300	100	68	2	30.0	21.4	115	2	5.0	31.5	240	7.8	51.0
320	125	78	2	36.0	25.7	140	2	5.0	31.5	240	7.8	51.0

Table 12

Rated Power Supply: 220V/3Ph/60Hz

Model ACUM	Unit Characteristic		Compressor				Condenser Fan Motor			Model CADX	Evaporator Fan Motor	
	MFA	MCA	QTY	MCC Each	RLA	LRA	QTY	FLA Each	LRA Each		FLA	LRA
050	50	30	1	25	17.8	115	1	3.0	9.7	050	2.8	10.4
060	50	31	1	26	18.6	130	1	3.0	9.7	050	2.8	10.4
070	63	34	1	29	20.7	137	1	3.0	9.7	070	3.4	13.0
080	63	35	1	30	21.4	135	1	3.0	9.7	070	3.4	13.0
090	80	43	1	36	25.7	140	1	5.5	21.2	090	3.4	13.0
100	80	53	2	25	17.8	115	1	6.7	27.7	100	4.5	17.8
105	80	52	1	43	30.7	157	1	6.7	27.7	105	4.5	17.8
110	80	56	2	26	18.6	130	1	6.7	27.7	110	5.9	26.5
120	80	61	2	29	20.7	137	1	6.7	27.7	110	5.9	26.5
125	100	63	1	54	38.6	210	1	6.7	27.7	125	5.9	26.5
140	100	73	2	30	21.4	135	2	5.5	21.2	160	11.5	54.2
145	125	82	1	64	45.7	259	2	5.5	21.2	155	11.5	54.2
155	160	87	1	70	50.0	259	2	5.5	21.2	155	11.5	54.2
160	125	82	2	36	25.7	140	2	5.5	21.2	160	11.5	54.2
220	125	96	2	43	30.7	157	2	6.7	27.7	220	11.5	54.2
240	160	117	2	54	38.6	210	2	6.7	27.7	240	14.7	76.2
300	200	138	2	64	45.7	259	2	9.4	47.6	240	14.7	76.2
320	200	148	2	70	50.0	259	2	9.4	47.6	240	14.7	76.2

Table 13

### Legend :

**MFA** Maximum Fuse Amperes (for Fuse Sizing)  
**MCA** Minimum Circuit Amperes (for wire sizing).  
**MCC** Maximum Continuous Current corresponding to cut-out amperes of internal KLIXON motor protection.

**RLA** Rated Load Amperes  
**FLA** Full Load Amperes  
**LRA** Locked Rotor Amperes

### Notes :

Voltage imbalance between phases to be less than 2%.

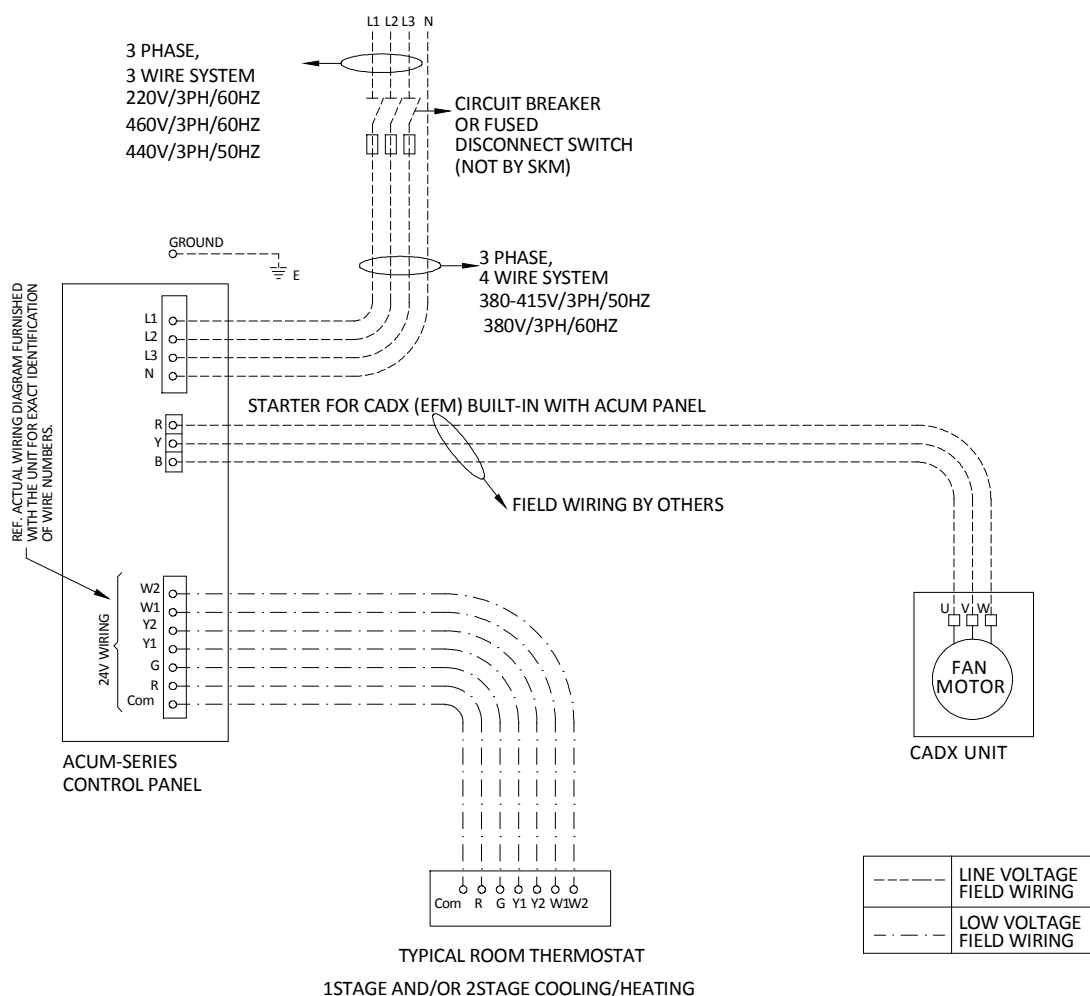


# SKM Split Air Conditioners ACUM + CADX Series - R22

## Field Wiring Requirement Schematic

### Field Connections

- ACUM + CADX series split air conditioners are designed to minimum field interaction.
- Every unit requires at most, field installed disconnect switch or circuit breaker and a 24V control room thermostat. (Cooling/ Heating, single stage or two stage)
- Power hookups, CADX fan motor power wiring and control wiring of thermostat as per field wiring schematic is all that requires to electrically connect any model.
- All field wiring must be done in accordance with appreciable local and national codes.
- For recommended maximum fuse sizes and minimum circuit amps for cable sizing refer electrical data on pages 13 & 14.
- Refer Installation, operation & maintenance manual for full details on field connections & requirements.
- Refer typical wiring diagram on page 15 for a schematic representation of required field electrical hookups for a standard ACUM+CADX series split units.



# SKM Split Air Conditioners ACUM + CADX Series - R22

## Fan Performance

Model CADX	Air Flow		Internal Static Pressure		External Static Pressure, inwg																		RPM Range					
					0.0(0)		0.1(25)		0.2(50)		0.3(75)		0.4(100)		0.5(125)		0.6(150)		0.7(175)		0.8(200)				0.9(225)		1.0(250)	
	cfm	L/S	inwg	Pa	rpm	KW	rpm	KW	rpm	KW	rpm	KW	rpm	KW	rpm	KW	rpm	KW	rpm	KW	rpm	KW	rpm	KW	rpm	KW	50 Hz	60 Hz
50	1380	651	0.39	95.95	-	-	649	0.15	710	0.17	768	0.20	824	0.22	878	0.25	930	0.27	980	0.3	1028	0.32	1075	0.35	1119	0.38	818 to 1066	804 to 1049
	1620	764	0.52	129.81	682	0.20	736	0.23	789	0.25	840	0.28	890	0.31	939	0.34	986	0.36	1032	0.39	1076	0.42	1119	0.46	1161	0.49		
	1870	882	0.68	169.42	780	0.31	827	0.34	874	0.37	919	0.40	964	0.43	1008	0.46	1050	0.49	1092	0.52	1133	0.55	1173	0.59	1212	0.62		
70	1800	849	0.42	104.00	644	0.22	695	0.25	745	0.27	794	0.30	843	0.33	890	0.36	936	0.39	981	0.42	1025	0.45	1068	0.48	1110	0.51	812 to 1059	799 to 1043
	2120	1000	0.57	141.51	754	0.36	797	0.39	840	0.42	882	0.45	924	0.48	965	0.51	1006	0.54	1046	0.58	1085	0.61	1124	0.65	1162	0.68		
	2440	1151	0.74	183.19	861	0.54	899	0.57	936	0.61	973	0.64	1010	0.68	1047	0.71	1083	0.75	1119	0.78	1154	0.82	1189	0.86	1223	0.90		
90	2050	967	0.39	98.39	505	0.20	558	0.23	610	0.27	660	0.30	709	0.34	756	0.38	802	0.42	845	0.46	887	0.50	928	0.54	967	0.59	666 to 869	748 to 975
	2400	1133	0.53	132.43	587	0.32	632	0.35	677	0.39	721	0.43	764	0.47	806	0.51	847	0.56	887	0.60	926	0.65	964	0.70	1001	0.74		
	2650	1251	0.64	159.24	645	0.42	686	0.46	726	0.50	767	0.55	806	0.59	845	0.64	883	0.68	921	0.73	957	0.78	993	0.83	1028	0.88		
100	2340	1104	0.51	126.28	573	0.30	620	0.33	665	0.37	710	0.41	754	0.45	797	0.49	839	0.53	880	0.58	919	0.62	957	0.67	995	0.71	788 to 982	740 to 923
	2640	1246	0.63	158.14	642	0.42	684	0.46	724	0.50	765	0.54	805	0.59	844	0.63	882	0.68	919	0.72	956	0.77	992	0.82	1027	0.87		
	2800	1321	0.71	176.10	678	0.50	717	0.54	756	0.58	794	0.62	832	0.67	869	0.72	906	0.77	942	0.81	977	0.87	1012	0.92	1046	0.97		
105	2500	1180	0.61	152.47	627	0.37	670	0.41	713	0.45	755	0.49	796	0.53	837	0.58	876	0.62	915	0.67	953	0.72	989	0.77	1025	0.81	830 to 1034	747 to 931
	2800	1321	0.75	187.73	697	0.52	735	0.56	774	0.60	812	0.65	849	0.69	886	0.74	923	0.79	958	0.84	993	0.89	1027	0.94	1061	0.99		
	3100	1463	0.90	224.97	764	0.69	799	0.73	834	0.78	869	0.83	903	0.88	937	0.93	970	0.98	1003	1.04	1036	1.09	1068	1.15	1099	1.20		
110	2790	1317	0.39	97.38	554	0.37	593	0.41	633	0.45	672	0.49	711	0.53	750	0.57	788	0.61	826	0.66	864	0.71	900	0.75	937	0.80	742 to 925	747 to 931
	3280	1548	0.53	132.11	648	0.60	681	0.64	715	0.69	749	0.73	782	0.78	815	0.82	849	0.87	881	0.93	914	0.97	947	1.03	979	1.08		
	3780	1784	0.69	171.81	742	0.91	771	0.96	801	1.01	830	1.06	859	1.11	888	1.16	917	1.21	946	1.27	975	1.33	1003	1.38	1032	1.44		
125	3200	1510	0.51	126.11	632	0.56	667	0.60	701	0.64	736	0.69	770	0.73	804	0.78	838	0.83	872	0.87	905	0.93	938	0.98	971	1.03	793 to 989	747 to 931
	3600	1699	0.63	157.11	708	0.79	739	0.83	770	0.88	800	0.93	831	0.98	861	1.03	892	1.08	922	1.14	952	1.19	982	1.24	1012	1.30		
	3800	1793	0.70	173.47	746	0.92	775	0.97	804	1.02	833	1.07	862	1.12	891	1.18	920	1.23	948	1.29	977	1.34	1006	1.40	1034	1.46		
155	4060	1916	0.54	134.29	868	0.92	904	0.98	941	1.04	977	1.10	1013	1.15	1049	1.21	1085	1.28	1120	1.34	1155	1.40	1190	1.47	1224	1.53	1087 to 1392	1102 to 1374
	4800	2265	0.73	182.82	1020	1.51	1051	1.57	1082	1.64	1113	1.71	1144	1.78	1174	1.85	1205	1.92	1235	1.99	1265	2.06	1295	2.13	1325	2.21		
	5230	2468	0.85	212.80	1106	1.94	1135	2.01	1163	2.08	1192	2.15	1220	2.23	1248	2.30	1276	2.38	1304	2.46	-	-	-	-	-	-		
160	4060	1916	0.54	134.29	868	0.92	904	0.98	941	1.04	977	1.10	1013	1.15	1049	1.21	1085	1.28	1120	1.34	1155	1.40	1190	1.47	1224	1.53	1087 to 1392	1102 to 1374
	4800	2265	0.73	182.82	1020	1.51	1051	1.57	1082	1.64	1113	1.71	1144	1.78	1174	1.85	1205	1.92	1235	1.99	1265	2.06	1295	2.13	1325	2.21		
	5230	2468	0.85	212.80	1106	1.94	1135	2.01	1163	2.08	1192	2.15	1220	2.23	1248	2.30	1276	2.38	1304	2.46	-	-	-	-	-	-		
220	4800	2265	0.41	102.62	-	-	-	-	655	0.74	702	0.82	748	0.91	794	0.99	838	1.08	882	1.18	924	1.27	965	1.37	1005	1.47	790 to 986	744 to 928
	6000	2831	0.63	155.98	692	1.14	731	1.23	769	1.32	807	1.41	845	1.51	883	1.61	920	1.72	957	1.82	993	1.93	1028	2.04	1064	2.16		
	6600	3115	0.74	185.56	757	1.50	792	1.60	827	1.70	862	1.80	896	1.91	931	2.01	965	2.12	999	2.24	1032	2.35	1065	2.47	1098	2.59		
240	6780	3199	0.53	130.91	689	1.38	723	1.47	757	1.57	792	1.67	826	1.77	860	1.87	893	1.98	927	2.08	960	2.20	994	2.31	1027	2.43	804 to 1003	849 to 1059
	7980	3766	0.71	176.96	805	2.23	835	2.34	864	2.45	893	2.56	922	2.67	951	2.79	980	2.91	1009	3.03	1037	3.15	1066	3.28	1095	3.41		
	8850	4176	0.85	212.67	888	3.01	914	3.13	941	3.25	967	3.37	993	3.50	1019	3.63	1046	3.76	1072	3.89	1098	4.02	1124	4.15	1150	4.29		

Table 14

### Notes:

1. Areas shaded in grey indicate operating range outside the standard motor. Shift to one step larger motor size in this area (not available for CADX-155 & 160).
2. Areas shaded in dark grey indicate factory setting of rpm.
3. Internal static pressure is based on pressure drops through evaporator coil, fan casing and 1" washable flat filter.
4. The shown rpm range is with standard pulley combination as supplied.
5. For dotted area consult SKM.



# SKM Split Air Conditioners ACUM + CADX Series - R22

## Weights

### CADX

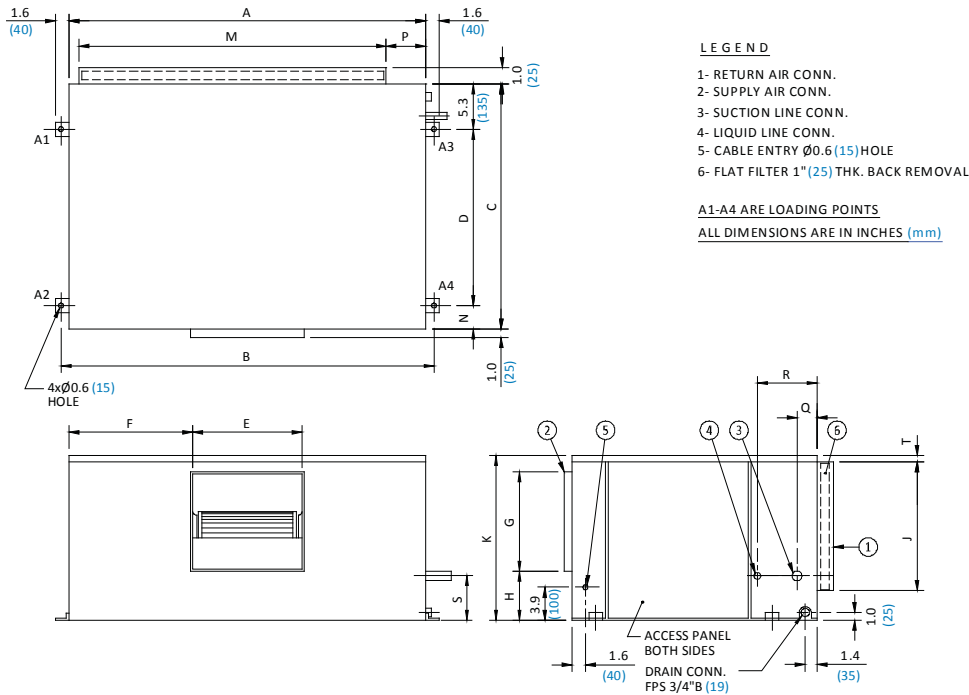
MODEL CADX-	LOAD AT EACH POINT lbs/kg				TOTAL WEIGHT lbs (kg)
	A1	A2	A3	A4	
050	44.2 (20)	44.2 (20)	44.2 (20)	44.2 (20)	177 (80)
070	45 (20.5)	45 (20.5)	45 (20.5)	45 (20.5)	180 (82)
090	55 (25)	55 (25)	55 (25)	55 (25)	220 (100)
100	57.5 (26.2)	57.5 (26.2)	57.5 (26.2)	57.5 (26.2)	230 (105)
110	67.5 (30.8)	67.5 (30.8)	67.5 (30.8)	67.5 (30.8)	270 (123)
125	87.5 (39.8)	87.5 (39.8)	87.5 (39.8)	87.5 (39.8)	350 (159)
155	92.5 (42)	92.5 (42)	92.5 (42)	92.5 (42)	370 (168)
160	110.0 (50)	110.0 (50)	110.0 (50)	110.0 (50)	440 (200)

### ACUM

MODEL ACUM-	LOAD AT EACH POINT lbs/kg				TOTAL WEIGHT lbs (kg)
	A1	A2	A3	A4	
050	75 (34)	75 (34)	75 (34)	75 (34)	300 (136)
060	77.5 (35)	77.5 (35)	77.5 (35)	77.5 (35)	310 (140)
070	80 (36.2)	80 (36.2)	80 (36.2)	80 (36.2)	320 (145)
080	91.2 (41.2)	91.2 (41.2)	91.2 (41.2)	91.2 (41.2)	365 (165)
090	105 (47.5)	105 (47.5)	105 (47.5)	105 (47.5)	420 (190)
100	107.5 (48.7)	107.5 (48.7)	107.5 (48.7)	107.5 (48.7)	430 (195)
105	110 (50)	110 (50)	110 (50)	110 (50)	440 (200)
110	110 (50)	110 (50)	110 (50)	110 (50)	440 (200)
120	110 (50)	110 (50)	110 (50)	110 (50)	440 (200)
125	110 (50)	110 (50)	110 (50)	110 (50)	440 (200)
140,145	187.5 (85.2)	187.5 (85.2)	187.5 (85.2)	187.5 (85.2)	750 (341)
155,160	187.5 (85.2)	187.5 (85.2)	187.5 (85.2)	187.5 (85.2)	750 (341)
220	215 (97.8)	215 (97.8)	215 (97.8)	215 (97.8)	860 (391)
240	217.5 (98.8)	217.5 (98.8)	217.5 (98.8)	217.5 (98.8)	870 (395)
300	250 (113.8)	250 (113.8)	250 (113.8)	250 (113.8)	1000 (455)
320	250 (113.8)	250 (113.8)	250 (113.8)	250 (113.8)	1000 (455)

## Dimensional Data - CADX

### CADX Models: 050 & 070

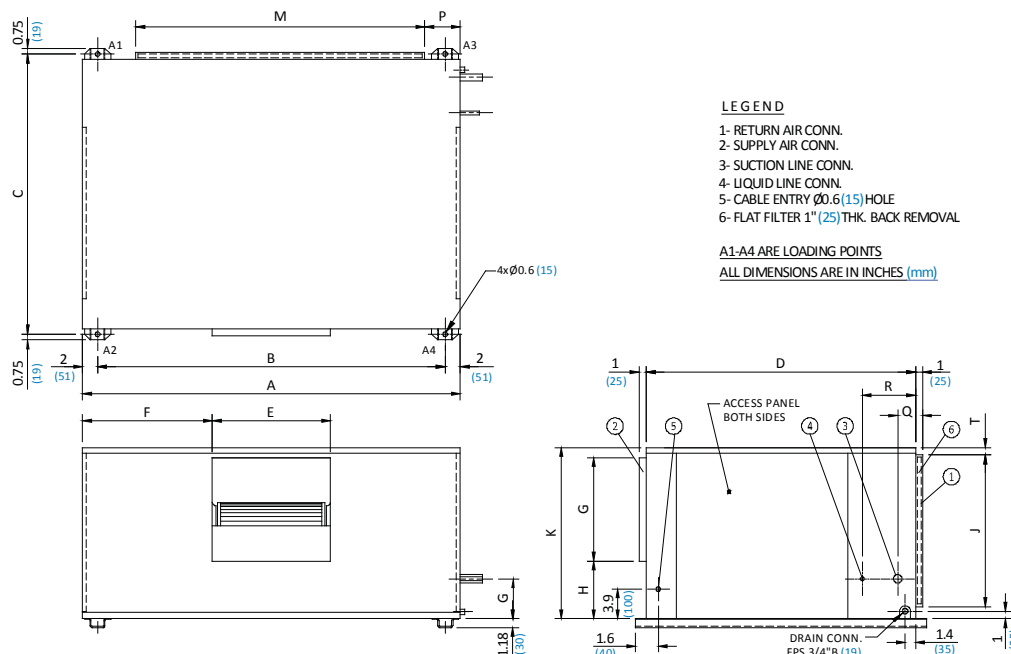


MODEL CADX-	A	B	C	D	E	F	G	H	J	K	M	N	P	Q	R	S	T	SUC. LINE CONN. Ø	LIQ. LINE CONN. Ø
050	38.6 (980)	40.6 (1030)	33.5 (850)	25.4 (645)	17 (432)	10.8 (274)	11.8 (300)	5.1 (130)	18.2 (463)	20.9 (530)	29.5 (750)	2.8 (70)	4.7 (120)	2.4 (60)	7.1 (180)	5.3 (135)	1.0 (25)	7/8 (22.2)	1/2 (12.7)
070	42.5 (1080)	44.5 (1130)	33.5 (850)	25.4 (645)	17 (432)	12.7 (324)	11.8 (300)	5.1 (130)	18.2 (463)	20.9 (530)	36.6 (930)	2.8 (70)	4.7 (120)	2.4 (60)	7.1 (180)	5.3 (135)	1.0 (25)	7/8 (22.2)	1/2 (12.7)

# SKM Split Air Conditioners ACUM + CADX Series - R22

## Dimensional Data - CADX

CADX Models: 090, 105, 125

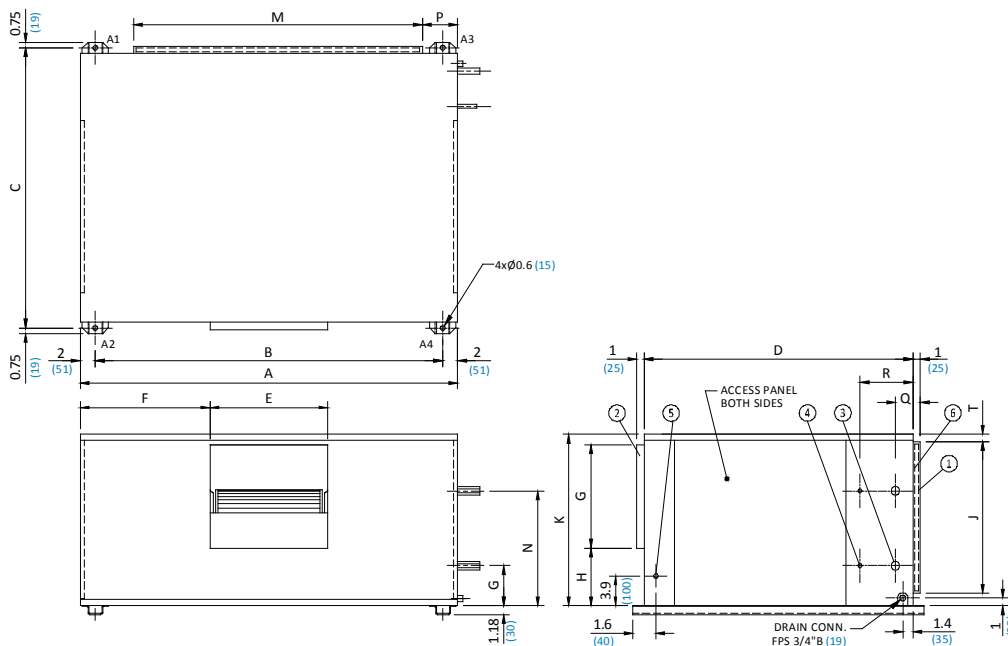


MODEL CADX-	A	B	C	D	E	F	G	H	J	K	M	P	Q	R	S	T	SUC. LINE CONN. $\varnothing$	LIQ. LINE CONN. $\varnothing$
090	50.4 (1280)	46.4 (1178)	37.4 (950)	35.9 (912)	15.6 (395)	17.4 (443)	13.5 (342)	8 (203)	20.2 (514)	22.8 (580)	38.6 (980)	4.7 (120)	2.4 (60)	7.1 (180)	5.31 (135)	1 (25)	1 1/8 (28.6)	1/2 (12.7)
105	50.4 (1280)	46.4 (1178)	37.4 (950)	35.9 (912)	15.6 (395)	17.4 (443)	13.5 (342)	8 (203)	20.2 (514)	22.8 (580)	38.6 (980)	4.7 (120)	2.4 (60)	7.1 (180)	5.31 (135)	1 (25)	1 1/8 (28.6)	1/2 (12.7)
125	62.2 (1580)	58.2 (1478)	37.4 (950)	35.9 (912)	15.6 (395)	23.3 (593)	13.5 (342)	8 (203)	20.2 (514)	22.8 (580)	52.4 (1330)	4.7 (120)	2.4 (60)	7.1 (180)	5.31 (135)	1 (25)	1 1/8 (28.6)	1/2* (12.7)

\*5/8 FOR COMBINATION ACUM-125 + CADX-125 (60 HZ)

## Dimensional Data - CADX

CADX Models: 100 & 110



MODEL CADX-	A	B	C	D	E	F	G	H	J	K	M	N	P	Q	R	S	T	SUC. LINE CONN. $\varnothing$	LIQ. LINE CONN. $\varnothing$
100	50.4 (1280)	46.4 (1178)	37.4 (950)	35.9 (912)	15.6 (395)	17.4 (443)	13.5 (342)	8 (203)	20.2 (514)	22.8 (580)	38.6 (980)	15.31 (389)	4.7 (120)	2.4 (60)	7.1 (180)	5.31 (135)	1 (25)	2 x 7/8 2 x (22.2)	2 x 1/2 2 x (12.7)
110	62.2 (1580)	58.2 (1478)	37.4 (950)	35.9 (912)	15.6 (395)	23.3 (593)	13.5 (342)	8 (203)	20.2 (514)	22.8 (580)	52.4 (1330)	15.31 (389)	4.7 (120)	2.4 (60)	7.1 (180)	5.31 (135)	1 (25)	2 x 7/8 2 x (22.2)	2 x 1/2 2 x (12.7)



# SKM Split Air Conditioners ACUM + CADX Series - R22

## Dimensional Data - CADX

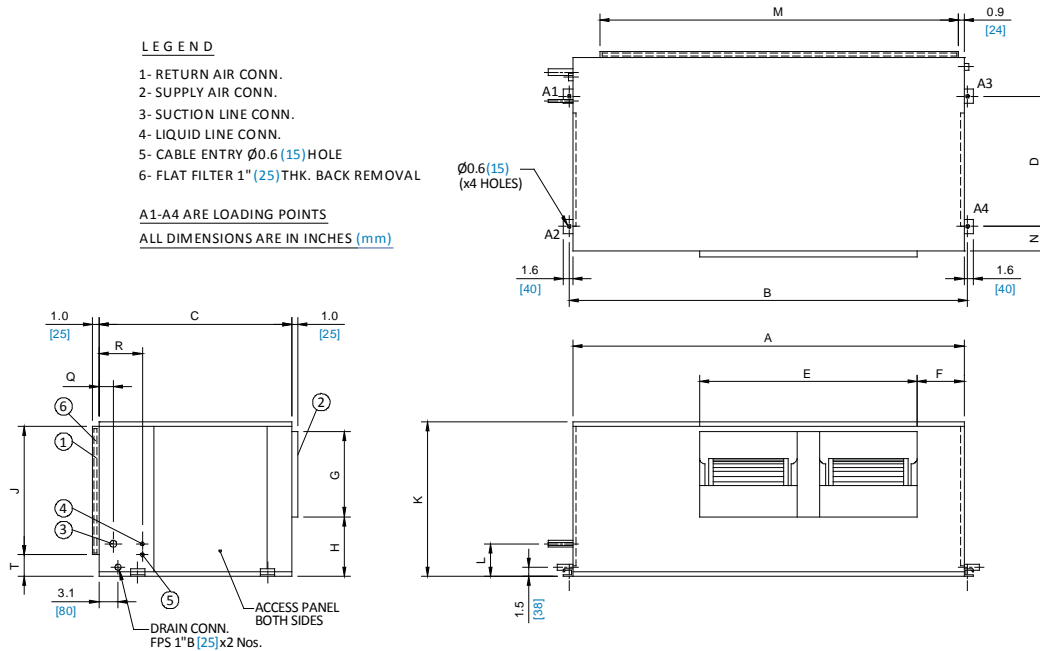
CADX Models: 155

### LEGEND

- 1- RETURN AIR CONN.
- 2- SUPPLY AIR CONN.
- 3- SUCTION LINE CONN.
- 4- LIQUID LINE CONN.
- 5- CABLE ENTRY  $\varnothing 0.6$  (15) HOLE
- 6- FLAT FILTER 1" (25) THK. BACK REMOVAL

A1-A4 ARE LOADING POINTS

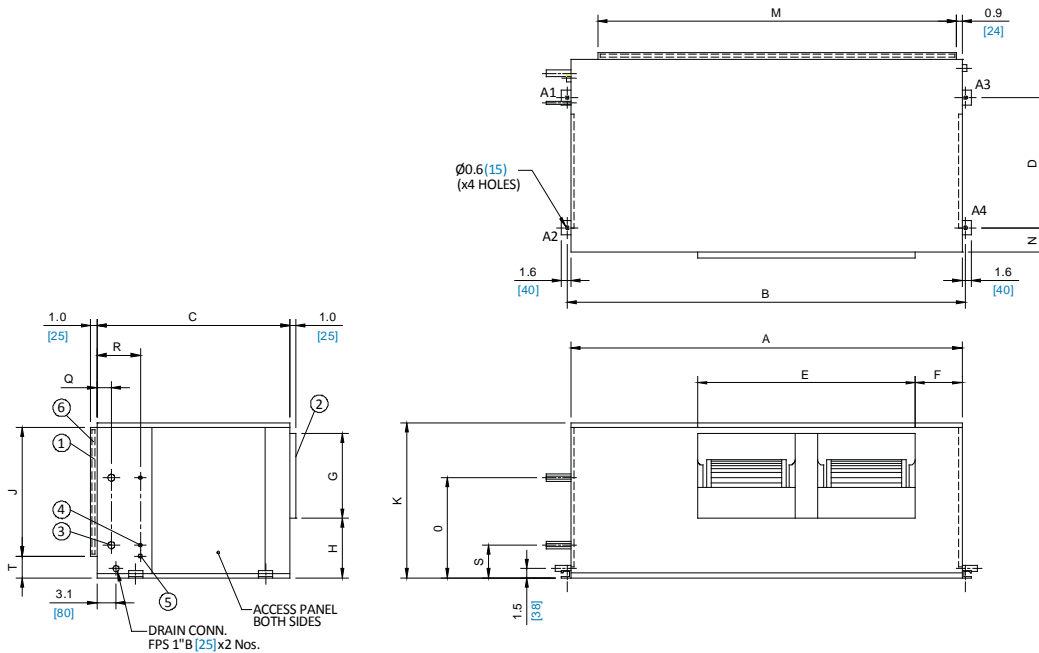
ALL DIMENSIONS ARE IN INCHES (mm)



MODEL CADX-	A	B	C	D	E	F	G	H	J	K	L	M	N	T	Q	R	SUC. LINE CONN. $\varnothing$	LIQ. LINE CONN. $\varnothing$
155	63.8 (1620)	65 (1650)	31.5 (800)	21.2 (538)	29.4 (748)	13.7 (349)	11.5 (292)	12.1 (307)	20.9 (532)	25.2 (640)	5.3 (135)	58.4 (1483)	4.0 (102)	3.5 (90)	2.4 (60)	7.1 (180)	1 1/8 (28.6)	5/8 (15.9)

## Dimensional Data - CADX

CADX Models: 160, 220, 240

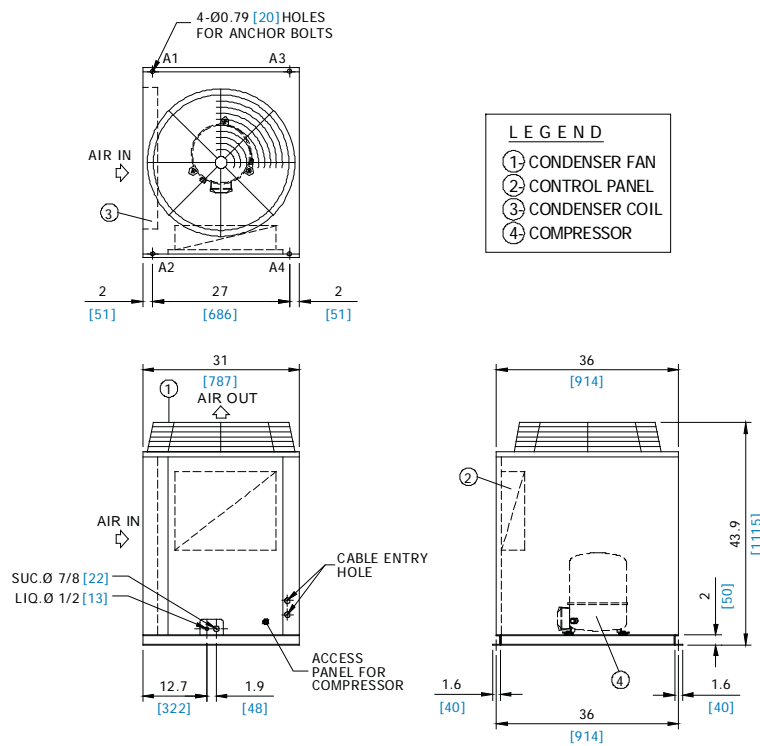


MODEL CADX-	A	B	C	D	E	F	G	H	J	K	L	M	N	O	P	Q	R	SUC. LINE CONN. $\varnothing$	LIQ. LINE CONN. $\varnothing$
160	63.8 (1620)	65 (1650)	31.5 (800)	21.2 (538)	29.4 (748)	13.7 (349)	11.5 (292)	12.1 (307)	20.9 (532)	25.2 (640)	5.3 (135)	58.4 (1483)	4.0 (102)	16.3 (414)	3.5 (90)	2.4 (60)	7.1 (180)	2 x 1 1/8 2 x (28.6)	2 x 1/2 2 x (12.7)
220	64.0 (1625)	65 (1650)	31.5 (800)	21.2 (538)	44 (1118)	8.7 (220)	13.4 (341)	13.2 (335)	28.9 (735)	33.3 (845)	5.3 (135)	58.1 (1475)	4.0 (102)	20.3 (516)	3.5 (90)	2.4 (60)	7.1 (180)	2 x 1 1/8 2 x (28.6)	2 x 1/2 2 x (12.7)
240	77.8 (1975)	79 (2005)	31.5 (800)	22 (559)	44 (1118)	8.7 (220)	13.4 (341)	13.2 (335)	28.9 (735)	33.3 (845)	5.3 (135)	72.1 (1832)	3.2 (81)	20.3 (516)	3.5 (90)	2.4 (60)	7.1 (180)	2 x 1 1/8 2 x (28.6)	2 x 5/8 * 2 x (15.9)

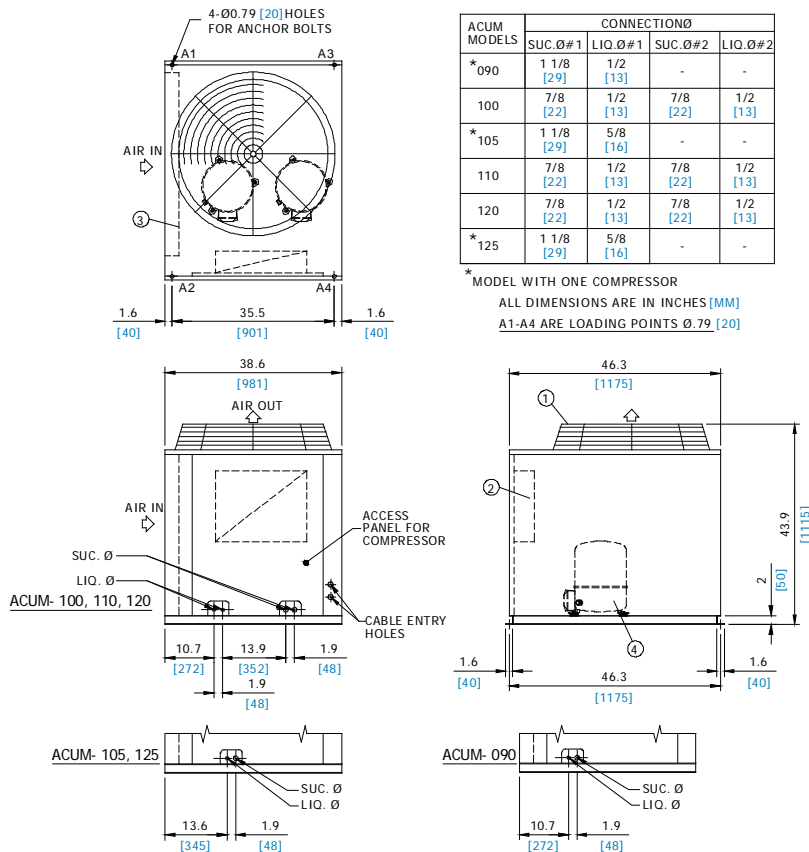
\* 1/2 FOR COMBINATION ACUM-240 + CADX-240 (50 HZ)

# SKM Split Air Conditioners ACUM + CADX Series - R22

## Condensing Unit Dimensional Data ACUM Models: 050, 060, 070 & 080



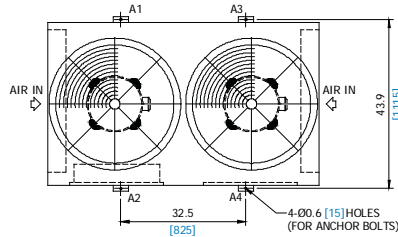
## Condensing Unit Dimensional Data ACUM Models: 090, 100, 105, 110, 120 & 125



# SKM Split Air Conditioners ACUM + CADX Series - R22

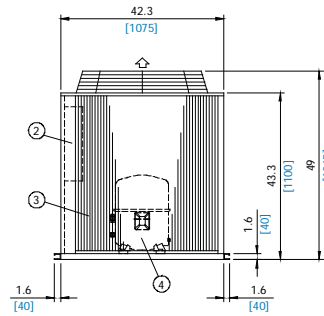
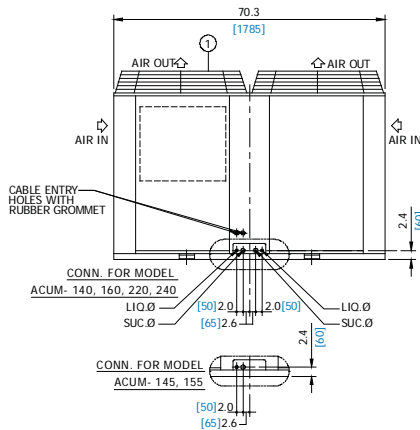
## Condensing Unit Dimensional Data

ACUM Models: 140, 145, 155, 160, 220 & 240



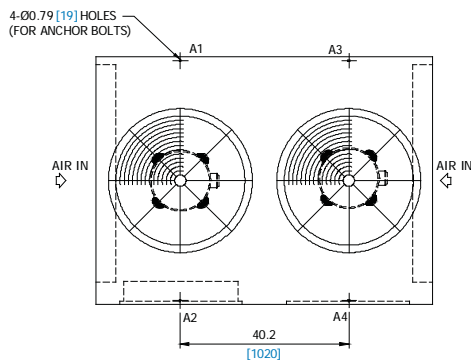
ACUM MODELS	CONNECTION			
	SUC. Ø#1	LIQ. Ø#1	SUC. Ø#2	LIQ. Ø#2
140	7/8 [22]	1/2 [13]	7/8 [22]	1/2 [13]
*145	1 1/8 [29]	5/8 [16]	-	-
*155	1 1/8 [29]	5/8 [16]	-	-
160	1 1/8 [29]	1/2 [13]	1 1/8 [29]	1/2 [13]
220	7/8 [22]	1/2 [13]	7/8 [22]	1/2 [13]
240	1 1/8 [29]	5/8 [16]	1 1/8 [29]	5/8 [16]

\* MODEL WITH ONE COMPRESSOR  
ALL DIMENSIONS ARE IN INCHES [MM]  
A1-A4 ARE LOADING POINTS Ø.79 [20]

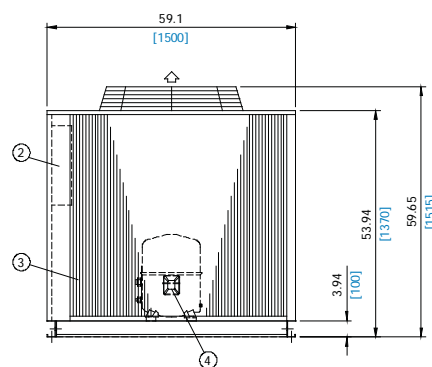
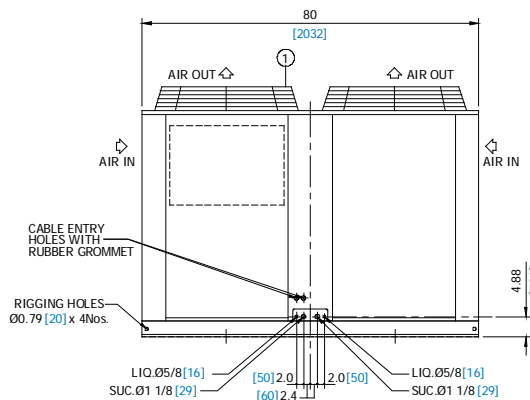


## Condensing Unit Dimensional Data

ACUM Models: 300, 320



LEGEND	
①	CONDENSER FAN
②	CONTROL PANEL
③	CONDENSER COIL
④	COMPRESSOR



# SKM Split Air Conditioners ACUM + CADX Series - R22

## GUIDE SPECIFICATIONS

### GENERAL

Split air conditioner shall be composed of a ceiling suspended indoor fan coil unit & floor mounted outside air cooled condensing unit, rated in accordance with ARI standards 210 / 240-94 and 360-93.

The indoor and outdoor units shall be factory assembled, internally wired, charged with R-22 and fully tested. Unit should be capable to operate in a wide range of ambient temperatures from 60°F (15.5°C) to 125°F (52°C) and shall be selected in accordance with project requirements and installed as per Instruction, Operation & Maintenance Manual.

### CONDENSING UNIT

The condensing Unit shall be composed of Compressor(s), coil(s) and condenser fan(s).

### COMPRESSOR

Compressor(s) shall be hermetic reciprocating; refrigerant gas cooled, furnished with internal overload protection device, internal pressure relief valve, crankcase heater & shall be mounted on spring vibration isolators. These compressors conform to internationally recognized standards like NF, VDE, CSA & UL.

### CONDENSER COIL(S)

Condenser coils shall be air cooled with integral sub cooler, constructed of seamless copper tubes 3/8" OD mechanically expanded into wavy plate type aluminum fins with maximum 12 fpi (2.1mm) spacing. These coils shall be tested against leakage by air pressure of 450 psig (3100 Kpa) under water, cleaned & dehydrated at the factory. Coil shall conform to ARI-410/91.

### CONDENSER FAN(S) & MOTOR(S)

Condenser Fans shall be direct driven propeller type discharging air vertically upward, equipped with statically & dynamically balanced aluminum alloy blades, inherent corrosion resistant shaft & PVC coated steel wire fan guard. Condenser fan motor(s) shall be Totally Enclosed Air Over (TEAO), 6 poles with class-F insulation, minimum IP55 protection & wired to unit control panel.

### COOLING UNIT

#### Evaporator

Evaporator coil shall be constructed of seamless copper tubes 3/8" OD mechanically bonded to aluminum (copper) cross-wave fins with maximum 12 fpi (2.1mm) spacing. Coil consists of headers of seamless copper tubing, thermostatic expansion valve(s) & multi-circuited distributor(s). These coils shall be tested against leakage by air pressure of 400 psig (2750 Kpa) under water, cleaned & dehydrated at the factory. Coil shall conform to ARI - 410 / 91.

### Evaporator Fan & Motor

Fans of evaporators shall be forward curved, double inlet double width (DIDW), centrifugal type, statically & dynamically balanced, mounted on a single heavy duty shaft with permanently lubricated bearings & driven by V belt with an adjustable variable pitch motor pulley.

Motor shall be Totally Enclosed Fan Cooled (TEFC), 4 poles, class-F insulated, minimum IP55 protection and starter for the motor shall be provided in the matching condensing unit - ACUM control panel, if ordered.

### Filter(s)

Cooling unit shall be provided with cleanable media, easy access, and minimum 1" thick coarse filter having average extraction efficiency of 75% as per ASHRE standards 52-76 or equivalent DIN 24185.

### Casing

Units casing shall be made of Zinc coated galvanized steel sheets conforming to JIS-G3302 and ASTM-A525 that shall be phosphatized and then electrostatically dry powder coated of approx 60 microns to provide an extremely tough, scratch resistance, excellent anti corrosive protection that can pass 1000 hours in 5% salt spray testing at 95°F relative humidity as per ASTM B117-85. Casing shall be provided with access panels for easy service and maintenance & insulated with 1/2" (13.0mm) thick fibreglass insulation as per NFPA 90A and 90B for fire resistance.

### Controls

Condensing unit shall be provided with a weatherproof control panel enclosure comprising all electrical control devices except for the field supplied room thermostat and shall include the following components as minimum.

- Compressor contactor
- Condenser fan motor contactors and overload relays
- High / low pressure switch
- Anti recycling time delay relay
- 24-volt control transformer for remote thermostat connection
- Terminal for evaporator fan motor interlock

Split system shall be supplied with factory sized liquid line controls (Shut off valve, filter drier, sight glass and solenoid valves, if so specified).